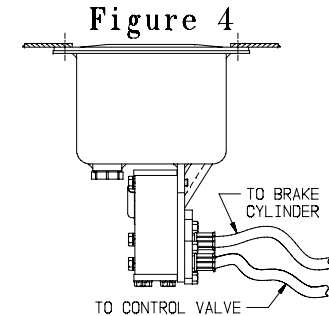
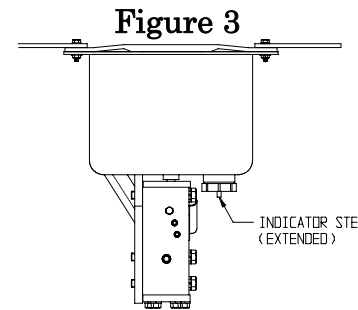
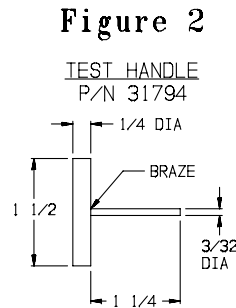
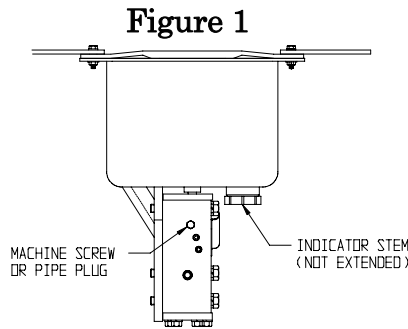


Models 6200-5 • 6200-5/30 • 6200-50/50 • 6200X-40B Empty Load TESTING PROCEDURE



The following test is to be performed in conjunction with the latest revision of AAR Standard S-486, "Code of Air Brake System Test for Freight Equipment," Section 4.6. **NOTE: If the car is loaded, only the Loaded Mode Test can be performed.**

LOADED CAR MODE

- 1) Locate and remove the upper most machine screw and lock washer (see Figure 1). **Note: This could be a pipe plug on older models.**
- 2) Insert the test handle (see Figure 2) into the vacant hole. This will place the empty load device into the loaded mode. Install a brake cylinder pressure gauge.
- 3) With the brake system charged to 90 psi, make a 30 psi reduction using the single car test device or the automated test device. With the brakes applied, check to see that the indicator stem **is not** extended, indicating that the empty load valve is in the loaded mode (see Figure 1). Record the brake cylinder pressure.
- 4) Release the brakes by placing the Single Car Test Device handle into position no. 1 or the automated test device. The brake cylinder piston should retract and air should exhaust from the retaining valve only.

EMPTY CAR MODE

- 5) After completion of the Loaded Car Test, remove the test handle and replace the machine screw and lock washer or the pipe plug. **Note: Do not over-tighten as no seal is required at this point.**
- 6) With the brake system charged to 90 psi, allow brake pipe to vent to 0 psi using position no. 5 of the single car test device or the equivalent with the automated test device. With the brakes applied, check to see that the indicator stem has extended (see Figure 3). The brake cylinder pressure must also be at least 20 psi lower than the final full service pressure noted in step number 3.
- 7) Release the brakes by pulling the handle of the brake cylinder release rod for 3 seconds. The brake cylinder piston should retract and air may be heard exhausting through the empty load valve exhaust vent protector. The indicator stem should no longer extend and brake cylinder pressure should completely exhaust to 0 psi.

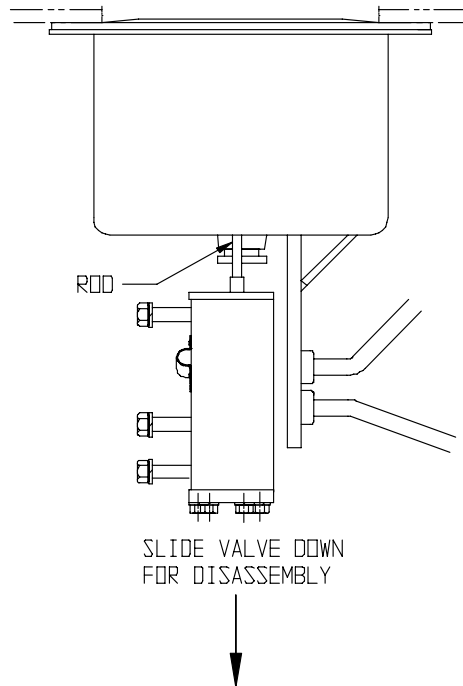
NOTE: The Empty Load Device will not function properly if it is piped incorrectly. See Figure 4 for correct pipe arrangements.

RECOMMENDED VALVE REMOVAL PROCEDURES

If a defective valve is found, use the following procedures to remove valve from canister. If canister is leaking, remove entire unit from car and return to Ellcon-National.

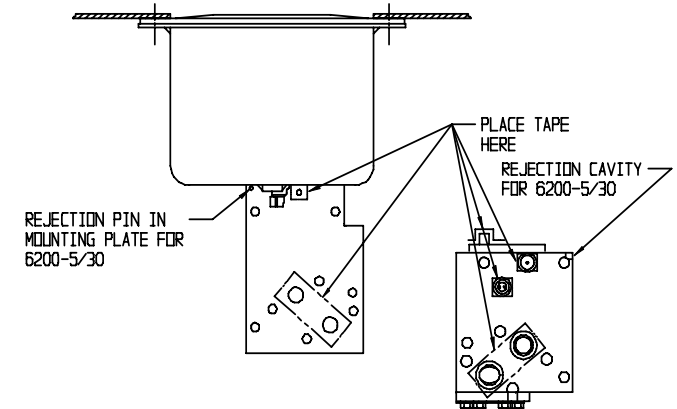
VALVE REMOVAL PROCEDURE

Locate and remove mounting bolts on front face of valve using $\frac{3}{4}$ -inch socket wrench. Slide valve assembly down off pipe bracket. Be careful not to bend or damage stainless steel rod, which should be saved for re-application. If rod is bent or damaged, contact Ellcon-National to order new one.



Place tape over open ports and return valve body to Ellcon-National for reconditioning.

Models 6200-5, 6200-5/30, 6200-50/50



Model 6200X-40B

