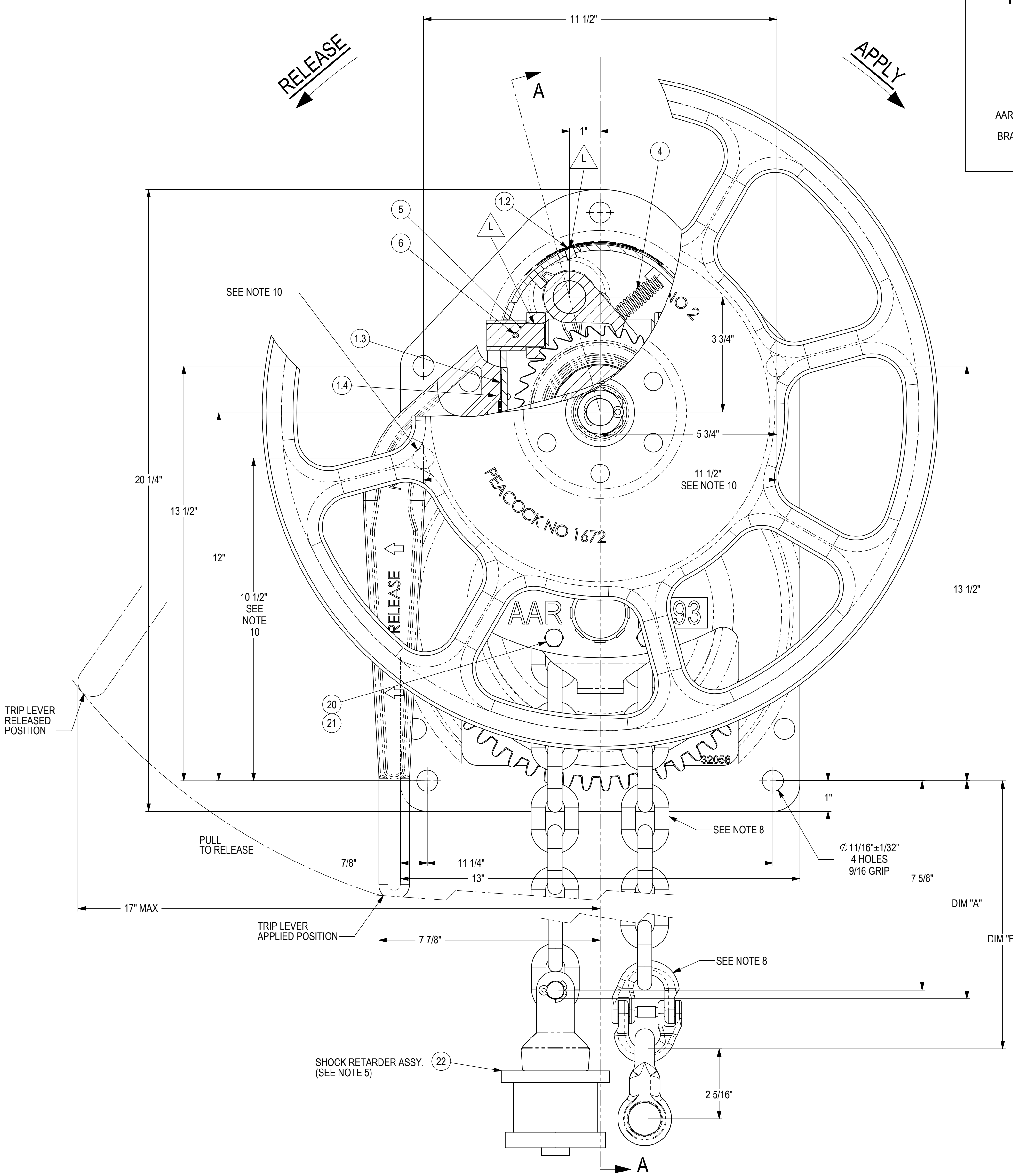


SECTION A-A



**INTERMEDIATE POWER
PROLONGED RELEASE
HAND BRAKE**

AAR FIELD MANUAL GROUP "R"
NON-SPIN VERTICAL WHEEL
GRADUAL & QUICK RELEASE

AAR APPROVED VERTICAL CHAIN TRAVEL 4" THRU 40"
BRAKES FURNISHED COATED WITH BLACK PRIMER
APPROXIMATE WEIGHT 108 LBS

GENERAL DATA

REVISIONS				
ZONE	REV.	DESCRIPTION	DATE	APPROVED
		ISSUED PER 6515		
A		REDESIGNED HANDBRAKE, SEE RECORD PRINT PER ECN 7847	6/11/2007	RAL

NOTES:

1. WE RECOMMEND HAND BRAKE BE APPLIED TO CAR AFTER BLASTING. WHEN SUBJECTED TO BLASTING, HAND BRAKE MUST BE PROTECTED FROM SHOT OR GRIT MATERIAL. REF. AAR FREIGHT CAR DESIGN SPECIFICATION PARA. 5.2.2
2. BELL CRANK OR SHEAVE FURNISHED AS SPECIFIED. SEE DRAWING D-32235 FOR PROPER INSTALLATION.
3. SEE DRAWING DX-3300SR-2 FOR IDENTIFICATION OF PARTS
4. ALL DIMENSIONS ± 1/16 UNLESS OTHERWISE SPECIFIED.
5. SHOCK RETARDER ASSEMBLY CAN BE FURNISHED WITH CHAIN LENGTH AS SPECIFIED. SEE DWG. C-7360 FOR LENGTH VARIATIONS. FOR MOUNTING TO CAR SEE DWG. D-32235.
6. LUBRICATION RESERVOIRS AND LUBRICATING POINTS INDICATED BY
7. WHEN APPLYING HAND WHEEL, TORQUE NUT TO 160 FT-LBS AND INSERT COTTER THRU SHAFT.
8. THE CHAIN MUST BE INSERTED INTO THE CHAIN DRUM WITH WELD PROJECTING OUT. THE COUPLING LINK MUST BE INSTALLED AS SHOWN IN FRONT VIEW. DIMENSION "A" + "B" = 34 1/8 ± 1/2
9. WHEN THE BRAKE IS QUICK RELEASED, THE BRAKE REMAINS IN THE RELEASED MODE UNTIL THE HAND WHEEL IS ROTATED IN THE APPLIED DIRECTION.
10. THIS HOLE IS ONLY USED WHEN REPLACING AN EXISTING GROUP "O" HAND BRAKE.

ITEM NO.	Part No	DESCRIPTION	QTY.
25	3107	FULL RELEASE LEVER	1
24	32234	COUPLING LINK	1
23	32157	CHAIN	1
22	7360	SHOCK RETARDER	1
21	4493-8	NUT	2
20	998-A	BOLT	2
19	30693	PRESSED STRIPPER	1
18	240	RIVET	1
17	458	CLEVIS	1
16	4034-9	COTTER PIN	1
15	242	LOCK WASHER	1
14	241	NUT	1
13	32082-3	PINION ASSEMBLY	1
12	1672	HAND WHEEL ASSEMBLY	1
11	4622	YOKE ASSEMBLY	1
10	454	RIVET	5
9.2	32071	BEARING	1
9.1	32058	BACK PLATE	1
9	32102	BACKPLATE ASSEMBLY	1
8.2	32172	GEAR & CHAIN DRUM ASSEMBLY	1
8.1	32071	BEARING	2
8	32172	CHAIN DRUM ASSEMBLY	1
7	32069	GEAR SHAFT	1
6	1664	ROLL PIN	2
5	9236	YOKE SHAFT	2
4	32075	PAWL SPRING	1
3	35148	COMBINATION PAWL	1
2	9143-2	CAM SHAFT	1
1.6.2	32231-3	FRONT PAWL SHAFT THURST BEARING	1
1.6.1	32231-4	FRONT PAWL SHAFT BEARING	1
1.6	32231	FRONT PAWL SHAFT BEARING	1
1.5.2	32074-3	BEARING WASHER	1
1.5.1	32074-4	BEARING	1
1.5	32074	PINION BEARING	1
1.4	3338-1	RIVET	2
1.3	31818	WARNING LABEL	1
1.2	5892	OIL CUP	1
1.1	32072	HOUSING	1
1	35352	HOUSING ASSEMBLY	1

BILL OF MATERIAL

TOLERANCES AND FINISHES UNLESS OTHERWISE NOTED

DECIMALS .XX ±
DECIMALS .XXX ±
ANGLES ±
FRACTIONS ±
DRILLED HOLE DIAMETERS +.010/- .001
BREAK ALL SHARP CORNERS AND EDGES
C/S: ALL TAPPED HOLES 1/16" ± ONE THREAD DEEP
MACHINED SURFACES

ELLCON NATIONAL
50 BEECHTREE BLVD. GREENVILLE, S.C. 29605

INTERMEDIATE POWER HAND BRAKE DESIGNATION 33000SR-2

SCALE 1:2 DATE 8/24/2005 REV.
DRAWN MMM D-33000SR-2 A
CHECKED

THIS DOCUMENT AND ITS CONTENTS CONTAIN CONFIDENTIAL AND PROPRIETARY INFORMATION OWNED BY ELLCON-NATIONAL, INC. AND IT AND ALL COPIES THEREOF ARE TO BE RETURNED TO ELLCON-NATIONAL WHEN SO REQUESTED. THIS DOCUMENT OR ANY PART THEREOF SHALL NOT BE REPRODUCED, COPIED, OR TRANSMITTED ELECTRONICALLY. THE INFORMATION CONTAINED HEREIN SHALL NOT BE DISCLOSED BY THE RECIPIENT TO OTHERS OR USED BY RECIPIENT WITHOUT THE PRIOR WRITTEN CONSENT SPECIFIC TO EACH CASE. ELLCON-NATIONAL, INC.

LEGEND	
	FLATNESS
	PARALLELISM
	PERPENDICULARITY
	CONCENTRICITY