

CONVENTIONAL PROLONGED RELEASE HAND BRAKE

AAR FIELD MANUAL GROUP "Q"

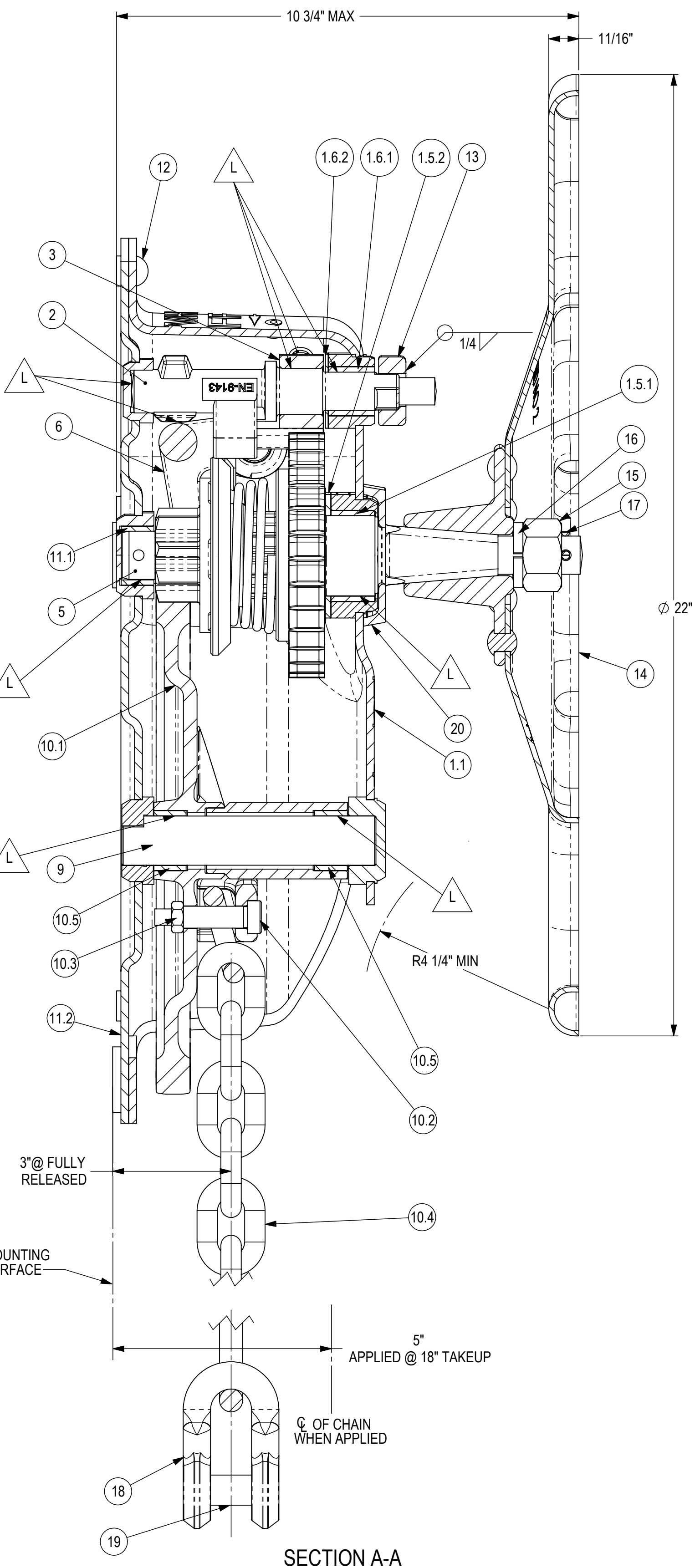
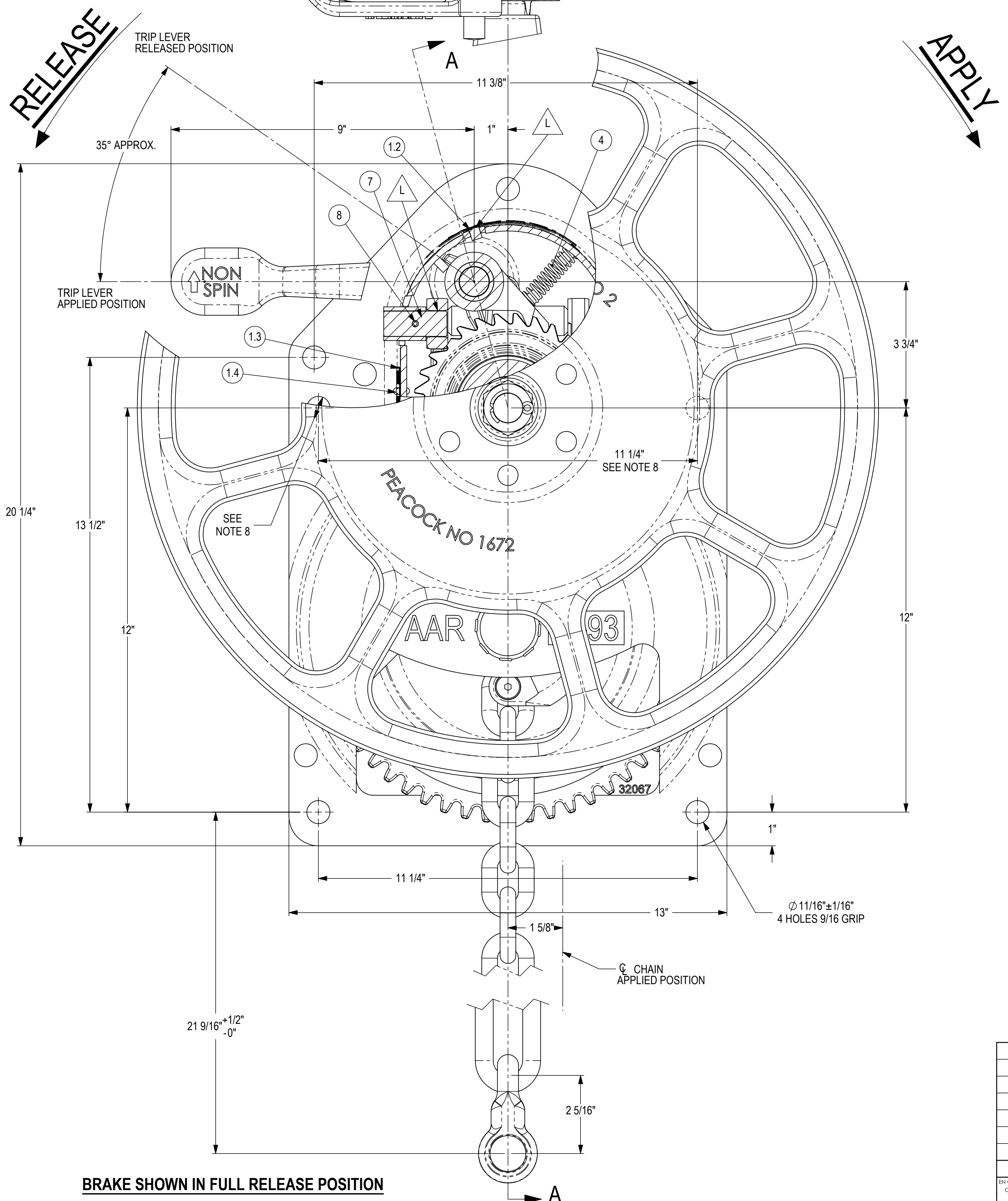
NON-SPIN VERTICAL WHEEL
GRADUAL & QUICK RELEASE

AAR APPROVED VERTICAL CHAIN TRAVEL THRU 18"

BRAKES FURNISHED COATED WITH BLACK PRIMER

GENERAL DATA

REVISIONS			
REV	DATE	DESCRIPTION	ECN BY
B	04-09-2008	ADDED 34562	8260 / MMM



- NOTES:
- WE RECOMMEND HAND BRAKE BE APPLIED TO CAR AFTER BLASTING. WHEN SUBJECTED TO BLASTING, HAND BRAKE MUST BE PROTECTED FROM SHOT OR GRIT MATERIAL. REF. AAR FREIGHT CAR DESIGN SPECIFICATION PARA. 5.2.2
 - BELL CRANK OR SHEAVE FURNISHED AS SPECIFIED. SEE DRAWING D-32243 FOR PROPER INSTALLATION.
 - SEE DRAWING DX-31000SR FOR IDENTIFICATION OF PARTS
 - ALL DIMENSIONS ± 1/16 UNLESS OTHERWISE SPECIFIED.
 - LUBRICATION RESERVOIRS AND LUBRICATING POINTS INDICATED BY
 - WHEN APPLYING HAND WHEEL, TORQUE NUT TO 160 FT-LBS AND INSERT COTTER THRU SHAFT.
 - WHEN THE BRAKE IS RELEASED, THE BRAKE REMAINS IN THE RELEASED MODE UNTIL THE HAND WHEEL IS ROTATED IN THE APPLIED DIRECTION.
 - THIS HOLE IS ONLY USED WHEN REPLACING AN EXISTING GROUP "N" HAND BRAKE

ITEM NO.	PART No	DESCRIPTION	QTY.
20	34562	RUBBER DEFLECTOR	1
19	240	RIVET	1
18	458	CLEVIS	1
17	4034-9	COTTER PIN	1
16	242	LOCK WASHER	1
15	241	NUT	1
14	1672	HAND WHEEL	1
13	32275	TRIP LEVER	1
12	454	RIVET	5
11.2	32067	BACK PLATE ASSEMBLY	1
11.1	32071	BEARING	1
11	32095	BACK PLATE ASSEMBLY	1
10.5	32071	BEARING	2
10.4	32096	CHAIN ASSEMBLY	1
10.3	3443-53	HEX NUT	1
10.2	5340-4	SHOULDER BOLT	1
10.1	32173	GEAR & CHAIN DRUM ASSEMBLY	1
10	32159	CHAIN DRUM ASSEMBLY	1
9	32069	GEAR SHAFT	1
8	1664	ROLL PIN	2
7	9236	YOKE SHAFT	2
6	4622	YOKE ASSEMBLY	1
5	32082-3	PINION ASSEMBLY	1
4	32075	PAWL SPRING	1
3	35148	COMBINATION PAWL	1
2	9143-2	CAM SHAFT	1
1.6.2	32231-3	FRONT PAWL SHAFT THRUST BEARING	1
1.6.1	32231-4	FRONT PAWL SHAFT BEARING	1
1.6	32231	FRONT PAWL SHAFT BEARING	1
1.5.2	32074-3	BEARING WASHER	1
1.5.1	32074-4	BEARING	1
1.5	32074	PINION BEARING	1
1.4	3338-1	RIVET	2
1.3	31818	WARNING LABEL	1
1.2	5892	OIL CUP	1
1.1	32068	PRESSED STEEL HOUSING	1
1	35351	HOUSING ASSEMBLY	1

INTERPRET DRAWING IN ACCORDANCE WITH ASME Y14.5 THIRD ANGLE PROJECTION
 ALL DIMENSIONS ARE IN INCHES UNLESS NOTED
 TOLERANCES/FINISHES UNLESS OTHERWISE NOTED
 DECIMALS: .XX ±
 FRACTIONS: XXX ±
 ANGLES: ±
 DRILLED HOLE DIAMETERS: +0.01/-0.01
 BREAK ALL SHARP CORNERS AND EDGES
 CHECK ALL TAPPED HOLES: 1/8" X ONE THREAD DEEP MATERIAL

EST. WT: 87 LBS

ELLCON NATIONAL
 50 BEECHTREE BLVD. GREENVILLE, S.C. 29605

CONVENTIONAL HAND BRAKE DESIGNATION 31000SR

DRAWN: MMM CHECKED: DATE: 7/22/2005 SCALE: 1:2
 SHEET 1 OF 1 REV B

REVISIONS: D 31000SR B

BRAKE SHOWN IN FULL RELEASE POSITION

SECTION A-A