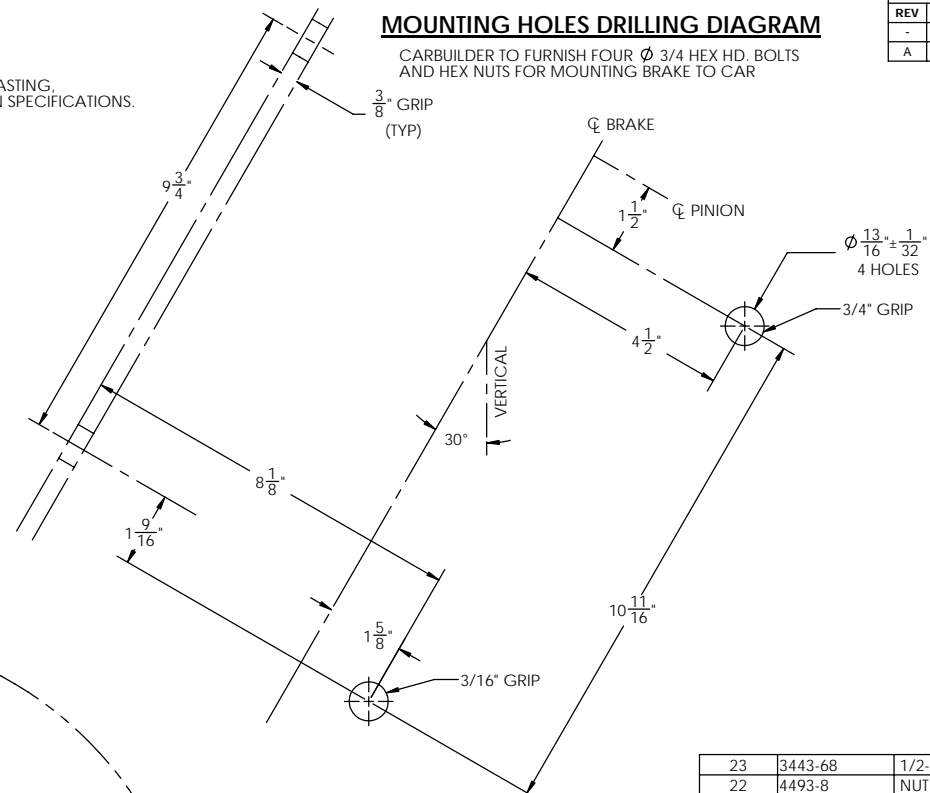


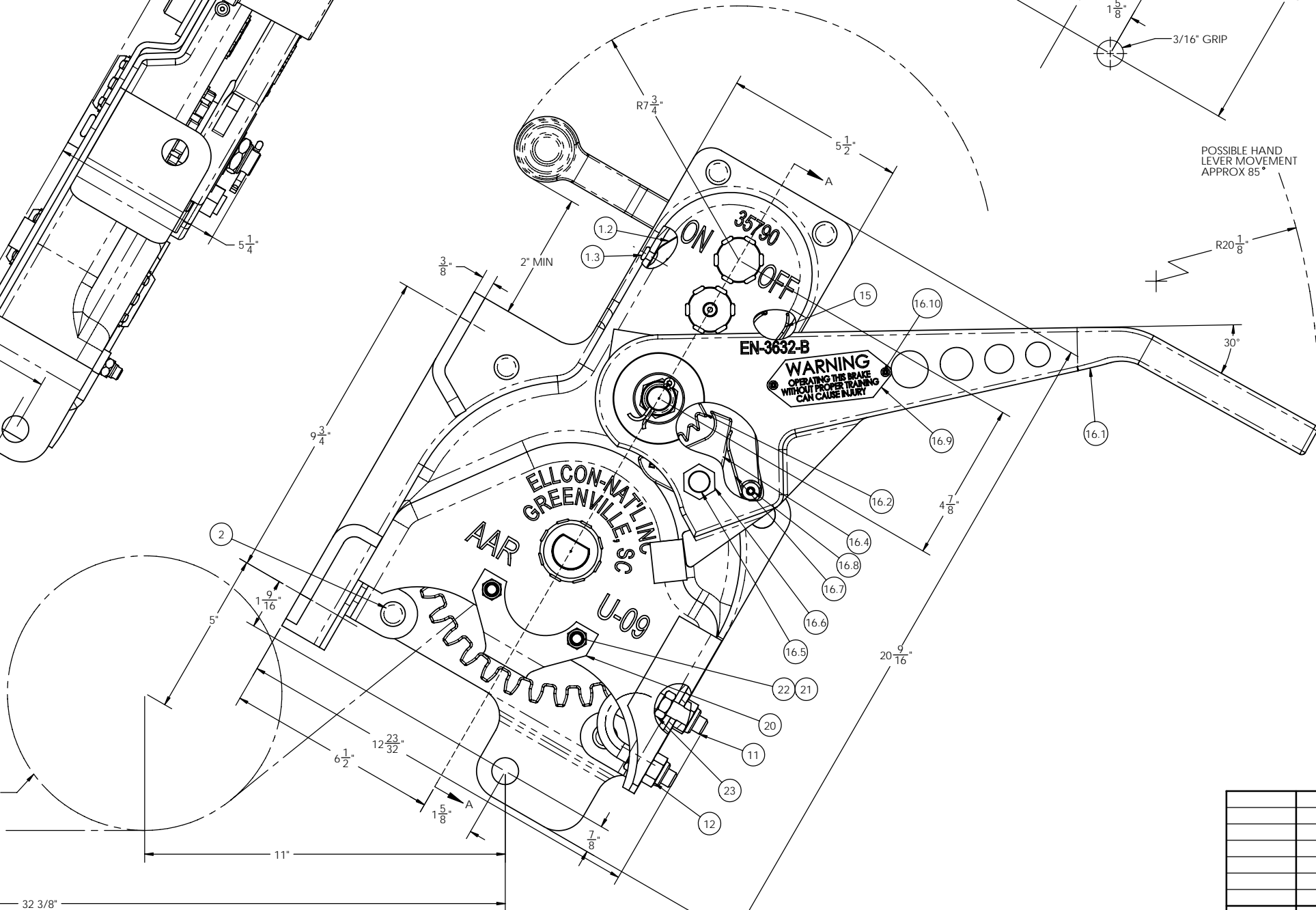
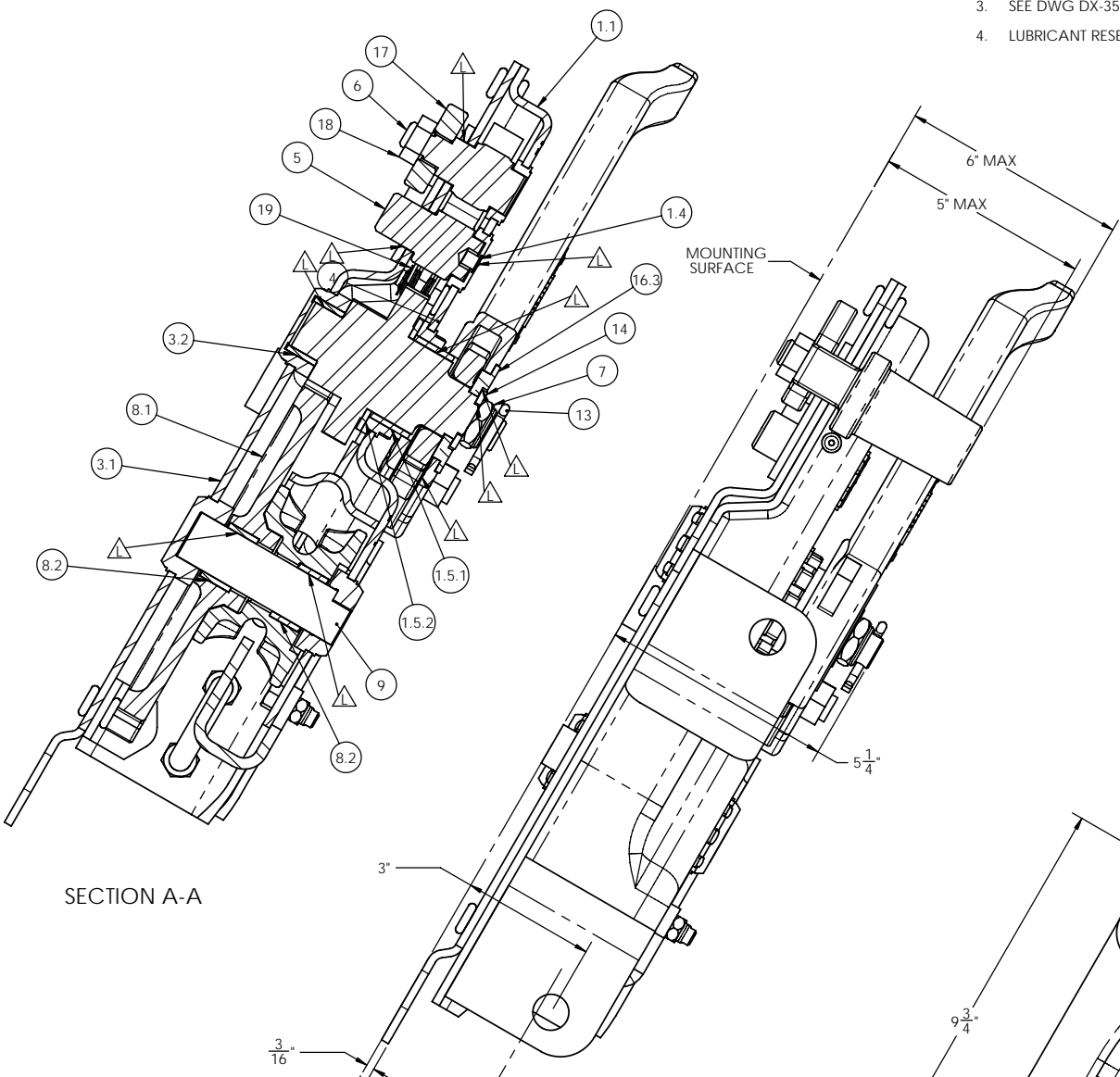
- NOTES:
1. WE RECOMMEND HAND BRAKE TO BE APPLIED TO CAR AFTER BLASTING. WHEN SUBJECTED TO BLASTING, HAND BRAKE MUST BE PROTECTED FROM SHOT OR GRIT MATERIAL, REF AAR FREIGHT CAR DESIGN SPECIFICATIONS.
  2. ALL DIMENSIONS  $\pm 1/16$  UNLESS OTHERWISE SPECIFIED.
  3. SEE DWG DX-35790 FOR IDENTIFICATION OF PARTS.
  4. LUBRICANT RESERVOIRS AND LUBRICATING POINTS INDICATED BY  $\Delta$

**MOUNTING HOLES DRILLING DIAGRAM**

CARBUILDER TO FURNISH FOUR  $\phi 3/4$  HEX HD. BOLTS AND HEX NUTS FOR MOUNTING BRAKE TO CAR



REVISIONS			
REV	DATE	DESCRIPTION	ECN BY
-	09-08-2008	INITIAL ISSUE	8845 MMM
A	03-12-2009	REPLACED P/N: 4493-35 WAS 4493-29	9448 RAL



ITEM NO.	PART NUMBER	DESCRIPTION	QTY.
23	3443-68	1/2-13 ZINC PLATED JAM NUT	2
22	4493-8	NUT, 3/8-16 UNC-2B HEX NYLON LOCKING	2
21	998-A	SCREW, 3/8-16 X 1\"/>	

**WARNING**  
OPERATING THIS BRAKE WITHOUT PROPER TRAINING CAN CAUSE INJURY

INTERPRET DRAWING IN ACCORDANCE WITH ASME Y14.5 THIRD ANGLE PROJECTION ALL DIMENSIONS ARE IN UNLESS OTHERWISE NOTED DECIMALS: XX ± FRACTIONS: XX ± ANGLES: ° MACHINED SURFACES: $\nabla$ DRILLED HOLE DIAMETERS: +0.01/-0.01 BREAK ALL SHARP CORNERS AND EDGES *FOR ALL TAPPED HOLES: 1.1X PITCH THREAD DEEP		
NEXT ASSEMBLY: _____ USED ON: _____ EN CODES: CUSTOMER [Y] VENDOR [ ] WEB [Y] APPROVAL CODE [A]		DRAWN: MMM CHECKED: MMM DATE: 8-29-08 SCALE: 1:2 SHEET: 1 OF 1 REV: A
BILL OF MATERIAL <b>HAND BRAKE MODEL 35790</b>		50 BEECHREE BLVD. GREENVILLE, S.C. 29605