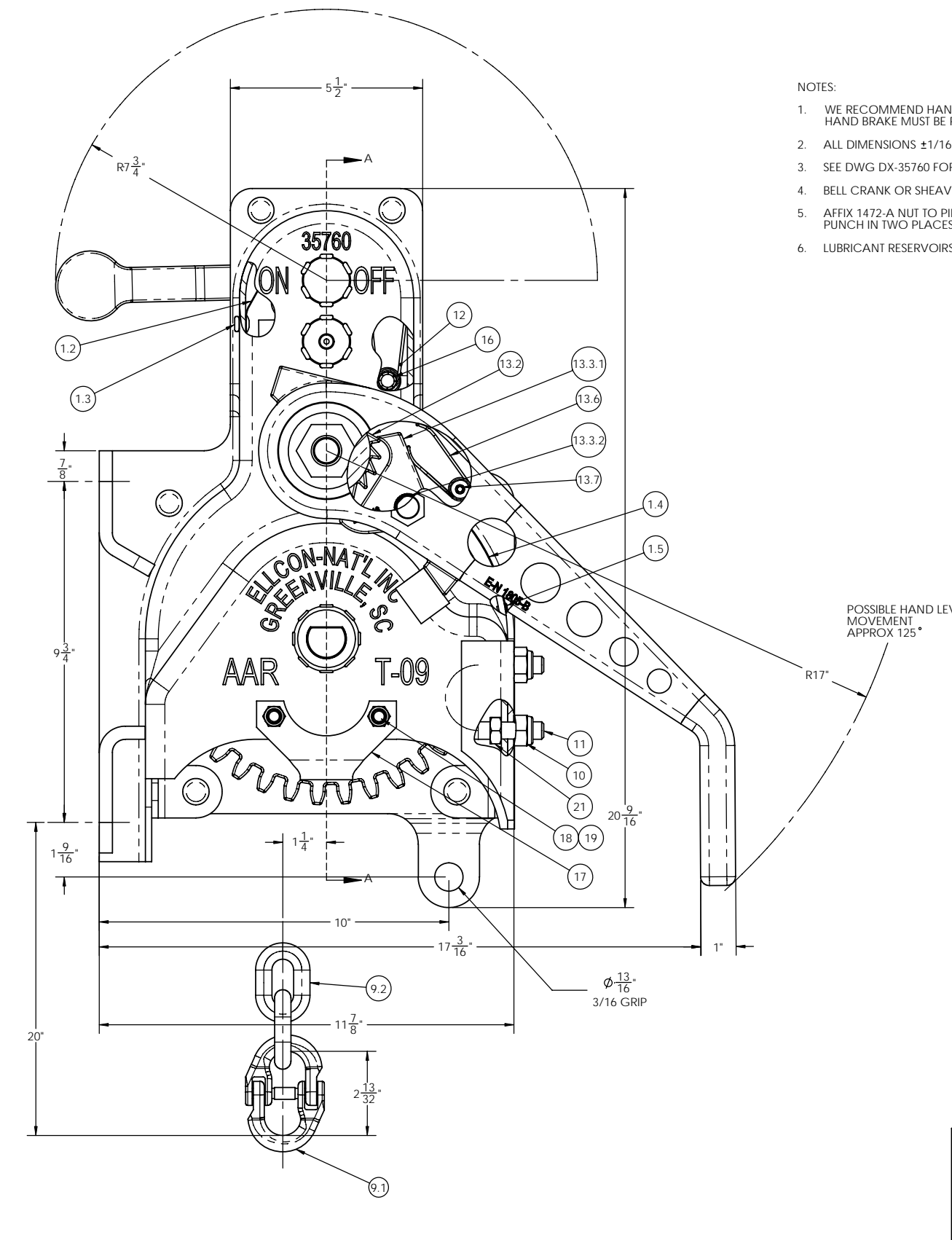
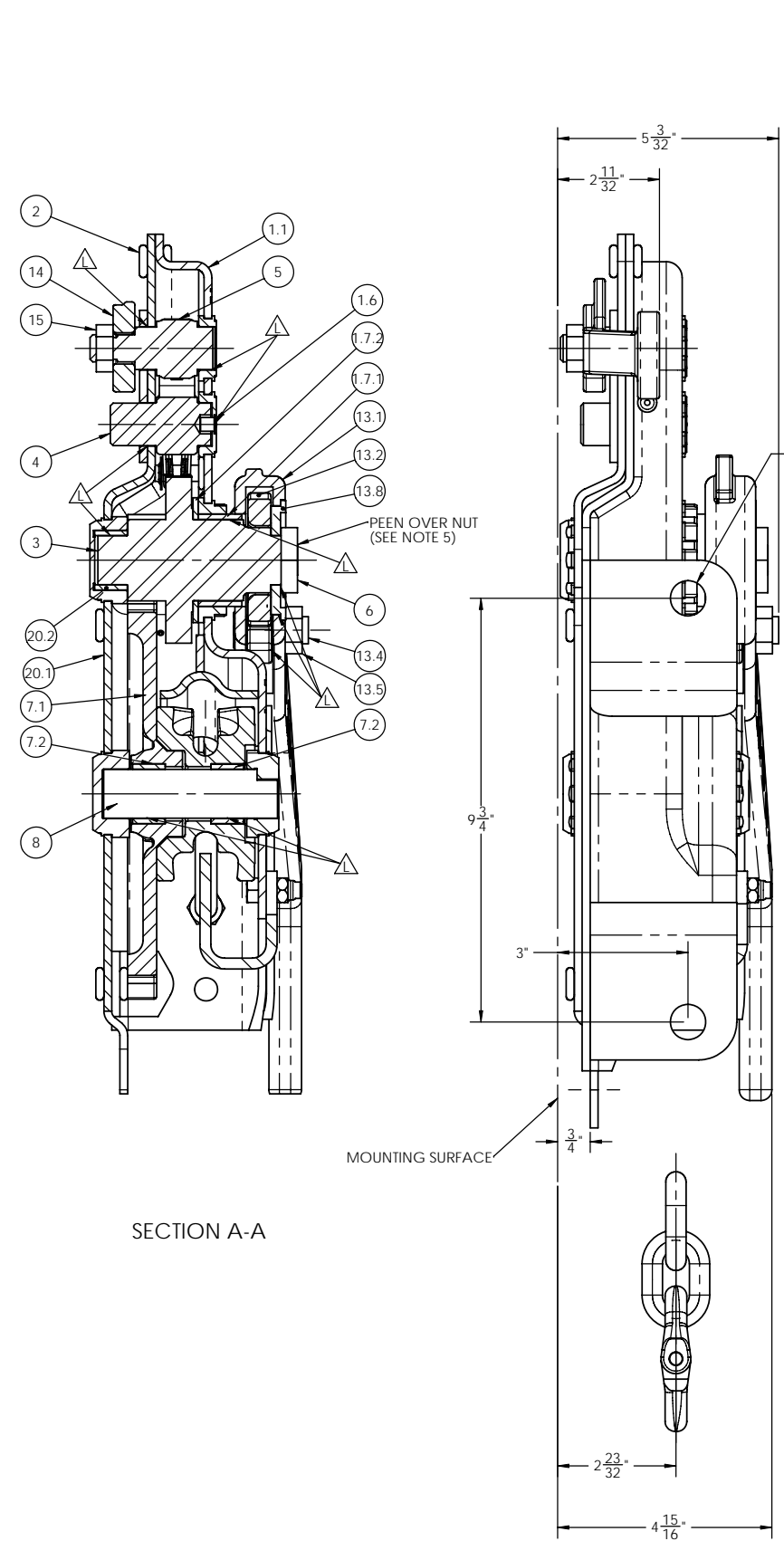


REVISIONS				
REV	DATE	DESCRIPTION	ECN	BY
-	09-29-2008	INITIAL RELEASE	8845	MMM
A	03-11-2009	CHANGED P/N; 4494-35 WAS 4493-29	9448	RAL



- NOTES:
1. WE RECOMMEND HAND BRAKE TO BE APPLIED TO CAR AFTER BLASTING. WHEN SUBJECTED TO BLASTING, HAND BRAKE MUST BE PROTECTED FROM SHOT OR GRIT MATERIAL, REF AAR FREIGHT CAR DESIGN SPECIFICATIONS.
  2. ALL DIMENSIONS ±1/16 UNLESS OTHERWISE SPECIFIED.
  3. SEE DWG DX-35760 FOR IDENTIFICATION OF PARTS.
  4. BELL CRANK OR SHEAVE FURNISHED AS SPECIFIED.
  5. AFFIX 1472-A NUT TO PINION SHAFT USING RED LOCTITE, NUT SHOULD BE PEENED TO SHAFT USING A CENTER PUNCH IN TWO PLACES.
  6. LUBRICANT RESERVOIRS AND LUBRICATING POINTS INDICATED BY Δ

ITEM NO.	PART NUMBER	DESCRIPTION	QTY.
21	3443-68	1/2-13 ZINC PLATED JAM NUT	2
20.2	32071	BEARING	1
20.1	35497	BACK PLATE ASSEMBLY	1
20	35498	BACK PLATE ASSEMBLY	1
19	4493-8	NUT, 3/8-16 UNC-2B HEX NYLON LOCKING	2
18	998-A	SCREW, 3/8-16 X 1" HX. HD. CAP	2
17	35531	CHAIN STRIPPER	1
16	4049-1	SPRING RETAINING PUSH NUT	1
15	3443-1	NUT 5/8-11 UNC-2B	1
14	1722	TRIP LEVER	1
13.8	32835-1	RETAINER	1
13.7	1437	.25 DIA X 1.125 ROLL PIN	1
13.6	1726	SPRING	1
13.5	3443-1	NUT 5/8-11 UNC-2B	1
13.4	4507	SHAFT	1
13.3.2	4477	BEARING	1
13.3.1	3843	HOLDING PAWL	1
13.3	6443	PAWL ASSEMBLY	1
13.2	3842	RATCHET	1
13.1	1805-B	HAND LEVER	1
13	32968-1	HAND LEVER ASSEMBLY	1
12	9088	SPRING	1
11	35508	U-BOLT	1
10	4493-35	JAM NUT	2
9.2	32158	CHAIN LINK, BULK	23
9.1	32234	COUPLING LINK	1
9	35511	CHAIN ASSEMBLY	1
8	32069-1	GEAR SHAFT	1
7.2	32071	BEARING	2
7.1	35503	CHAIN GEAR WELDMENT	1
7	35502	CHAIN GEAR ASSY	1
6	1472-A	NUT	1
5	1721	CAM	1
4	1720	HOLDING PAWL	1
3	1723-F	PINION	1
2	3208-16	RIVET BLIND 1/2	6
1.7.2	32074-3	BEARING WASHER	1
1.7.1	32074-4	BEARING	1
1.7	32074	PINION BEARING	1
1.6	5892	OIL CUP	1
1.5	3338-1	1/8 BLIND RIVET	2
1.4	31818	WARNING LABEL	1
1.3	3669-8	RIVET, BLIND 1/4	1
1.2	9363	CAM SPRING	1
1.1	35496-1	HOUSING	1
1	35489	HOUSING ASSEMBLY	1

**BILL OF MATERIAL**

ELLCON NATIONAL  
50 BEECHTREE BLVD. GREENVILLE, S.C. 29605

**HAND BRAKE MODEL 35760**

DATE: 9-18-08 SCALE: 1:2

DRAWN: MMM CHECKED: MMM

REV: 1 OF 1 SHEET: A

ITEM NO. 35760