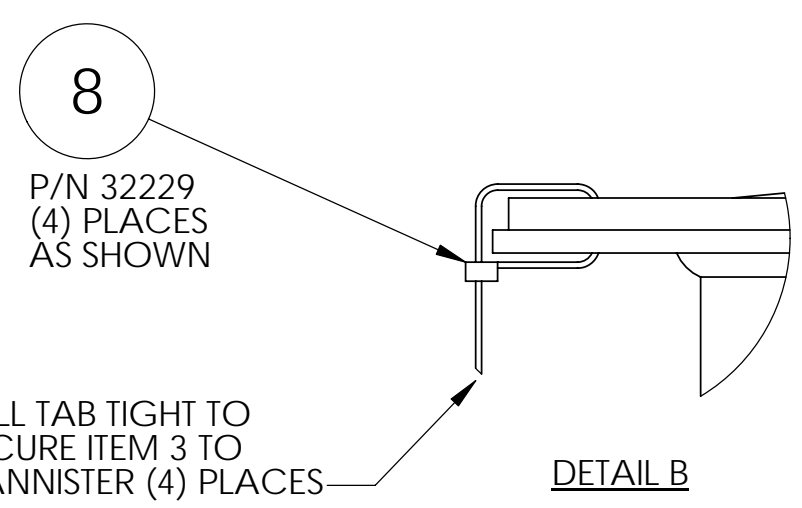
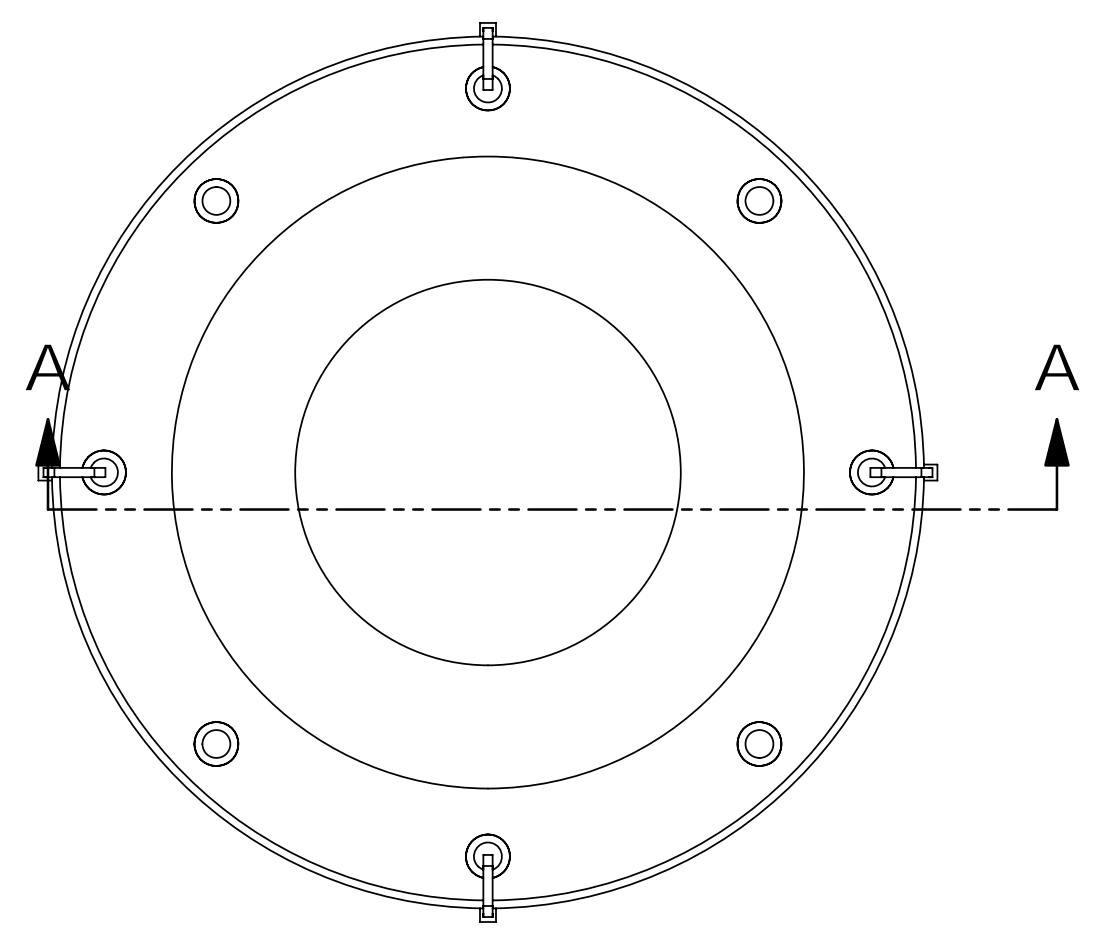
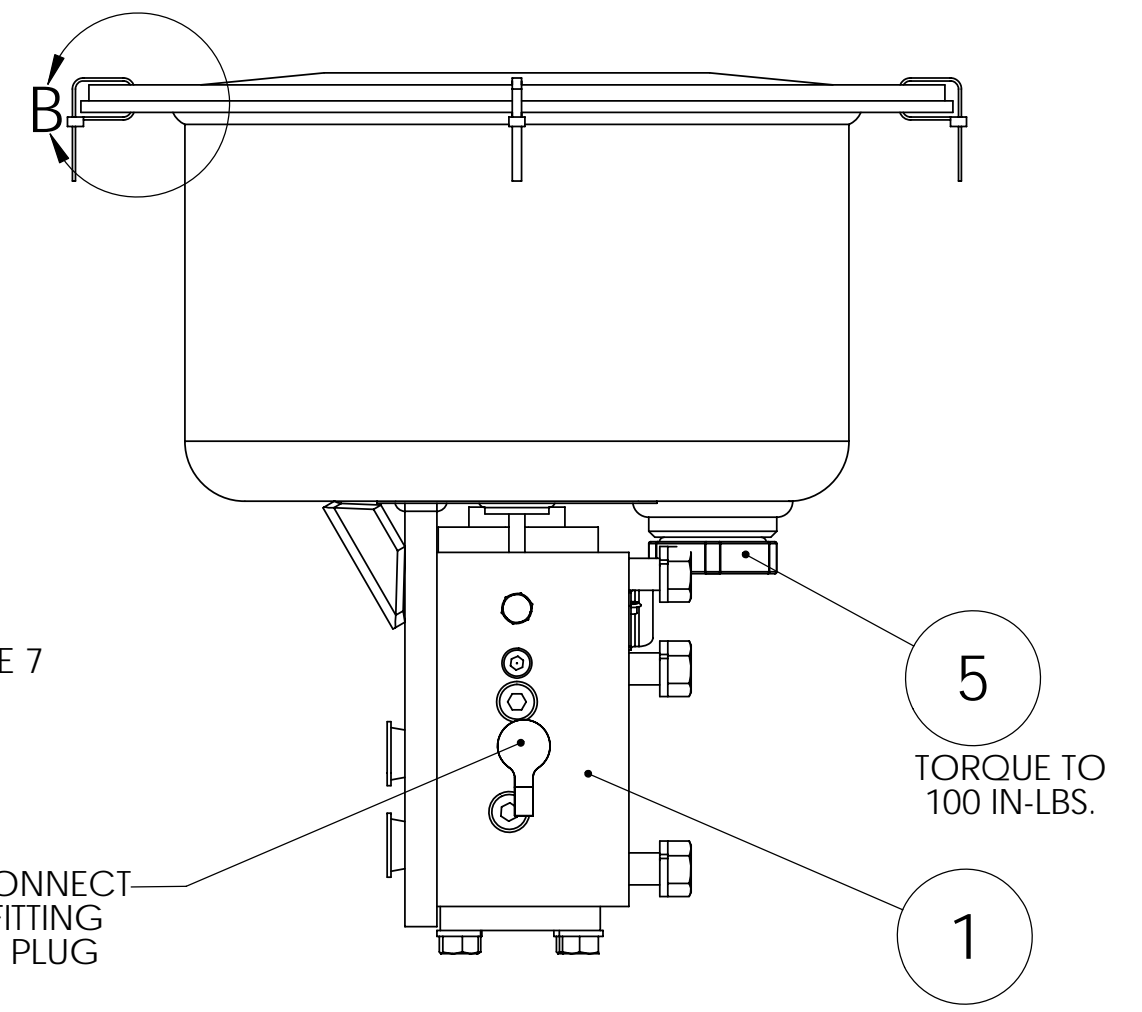
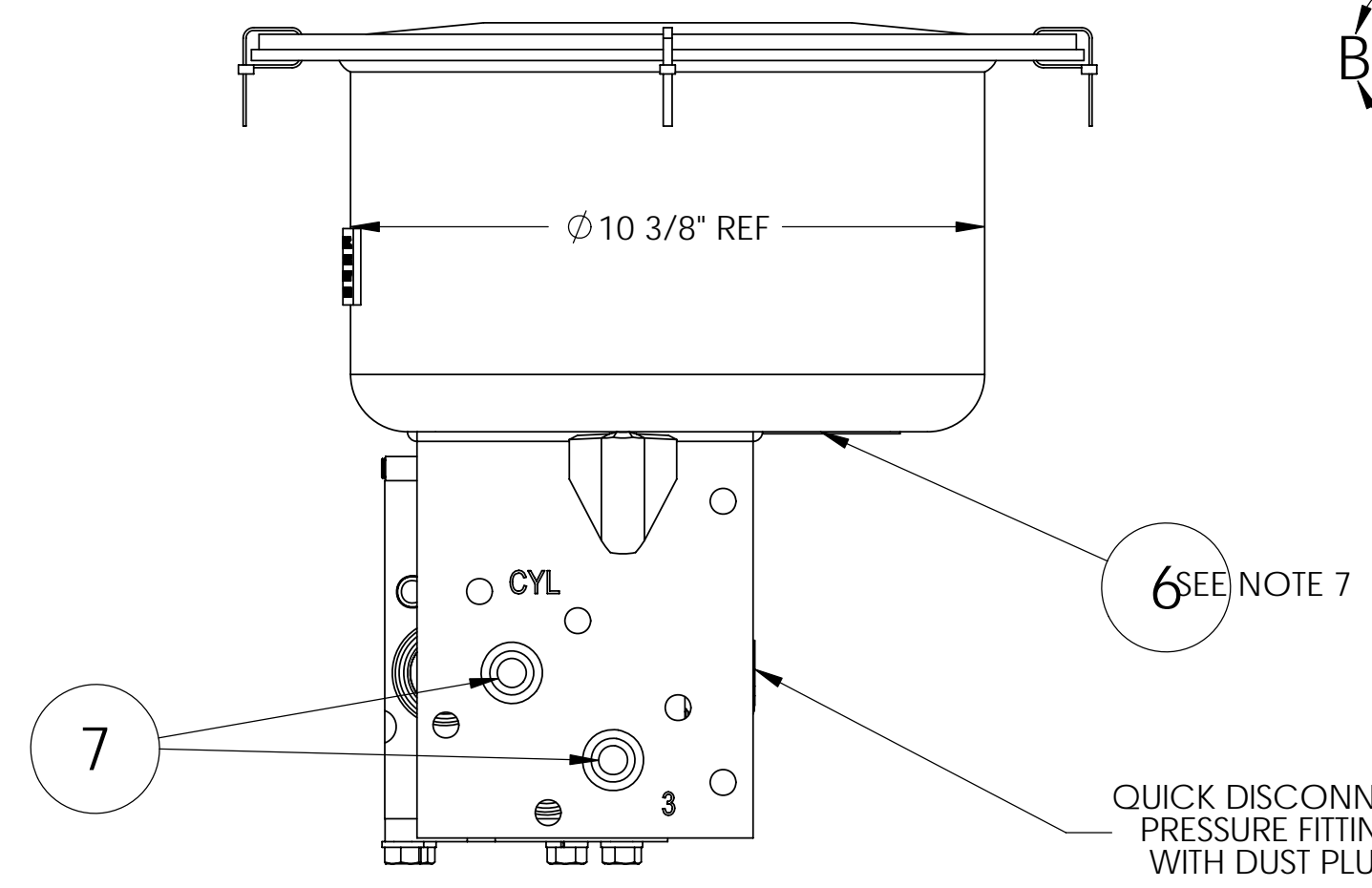
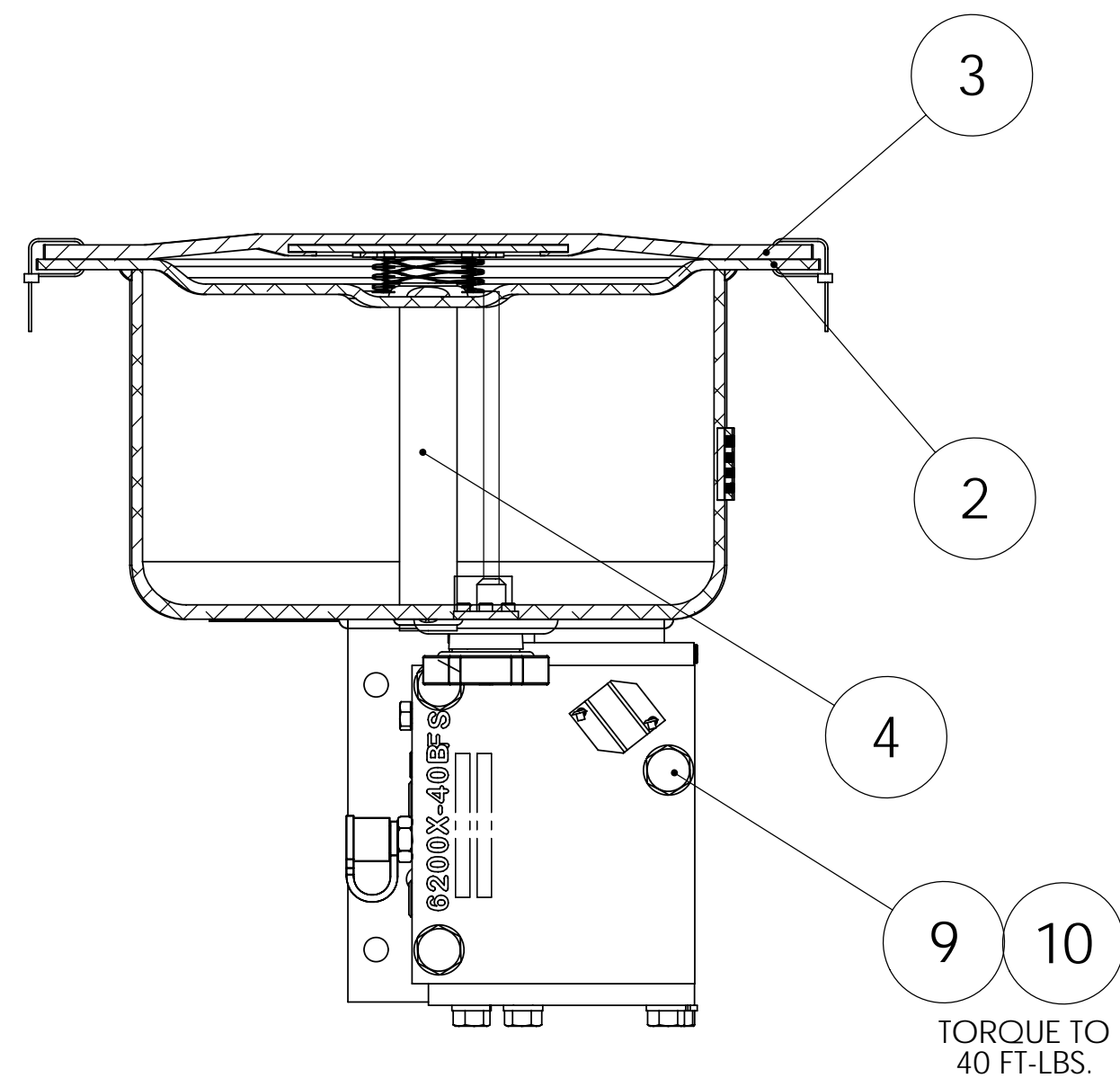


11 10 9 8 7 6 5 4 3 2 1

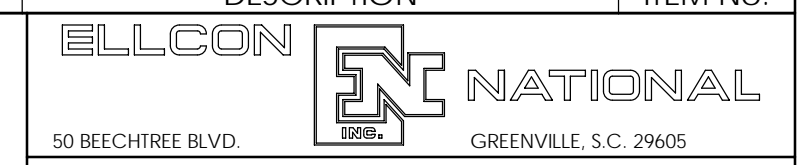
REVISIONS				
ZONE	REV.	DESCRIPTION	DATE	APPROVED
	B	ADDED NOTES 6 & 7 PER ECN 6654	12/14/2005	D.CARROLL



- NOTES:
- 1- APPLY LOCTITE (No. 242) TO THREADS OF ITEM 9.
 - 2- SEE DRAWING C-34860 FOR OUTLINE DIMENSIONS.
 - 3- "W" SUFFIX INDICATES VALVE FDA APPROVED GASKET.
 - 4- P/N 6200X-40BWFS UTILIZES GASKET ASSEMBLY P/N 34714W INSTEAD OF P/N 34714 (ITEM 3).
 - 5- ALL DIMENSIONS ARE NOMINAL.
 6. EXPOSED AREA OF ASSEMBLY TO BE COATED WITH A BLACK, WATER REDUCIBLE PRIMER.
 7. CARBUILDER TO REMOVE PROTECTIVE TAPE FROM NAMEPLATE BEFORE CAR IS SHIPPED.

QTY	PART No.	DESCRIPTION	ITEM No.
3	3391-29	LOCKWASHER - 1/2" (ZINC PLTD)	10
3	3442-132	H.H.C.S. - 1/2-13 X 3 3/4" (ZINC PLTD)	9
4	32229	SHIPPING TIE	8
2	4087-26	PLASTIC PROTECTOR CAP	7
1	31126-10	NAMEPLATE	6
1	33020	INDICATOR ASSEMBLY	5
1	34644	34644	4
1	34714	GASKET ASSEMBLY	3
1	34710	34710	2
1	34690FS	VALVE ASSEMBLY	1

MACHINING TOLERANCES AND FINISHES UNLESS OTHERWISE NOTED
 DECIMALS .XX ± .02
 DECIMALS .XXX ± .010
 ANGLES ± 2°
 FRACTIONS ± 1/32
 DRILLED HOLE DIAMETERS + .010/- .001
 BREAK ALL SHARP CORNERS AND EDGES
 CSK ALL TAPPED HOLES 118° x ONE THREAD DEEP
 MACHINED SURFACES 125



MODEL 6200X-40BFS EMPTY/LOAD DEVICE

SCALE 1:3	DATE 4-7-04	REV.
DRAWN SBS	C-6200X-40BFS B	
CHECKED DMS		

THIS DOCUMENT AND ITS CONTENTS CONTAIN CONFIDENTIAL AND PROPRIETARY INFORMATION OWNED BY ELLCON-NATIONAL, INC. AND IT AND ALL COPIES THEREOF ARE TO BE RETURNED TO ELLCON-NATIONAL WHEN SO REQUESTED. THIS DOCUMENT OR ANY PART THEREOF SHALL NOT BE REPRODUCED, COPIED, OR TRANSMITTED ELECTRONICALLY. THE INFORMATION CONTAINED HEREIN SHALL NOT BE DISCLOSED BY THE RECIPIENT TO OTHERS OR USED BY RECIPIENT WITHOUT THE PRIOR WRITTEN CONSENT SPECIFIC TO EACH CASE. ELLCON-NATIONAL, INC.

LEGEND	
\varnothing - DIAMETER	- FLATNESS
∇ - DEPTH	- PARALLELISM
- COUNTERBORE	- PERPENDICULARITY
- COUNTERSINK	- CONCENTRICITY
NEXT ASSY	USED ON

REF 34860 FOR OUTLINE DIMS

11 10 9 8 7 6 5 4 3 2 1