

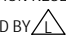
**INTERMEDIATE POWER
HAND BRAKE**

AAR FIELD MANUAL GROUP "O"
NON-SPIN VERTICAL WHEEL
GRADUAL & QUICK RELEASE

AAR APPROVED VERTICAL CHAIN TRAVEL 4" THRU 40"
BRAKES FURNISHED COATED WITH BLACK PRIMER
APPROXIMATE WEIGHT 102 LBS


REVISIONS			
REV	DATE	DESCRIPTION	ECN BY
G	04-23-2008	REDRAWN, ADDED 34562	8260/MMM

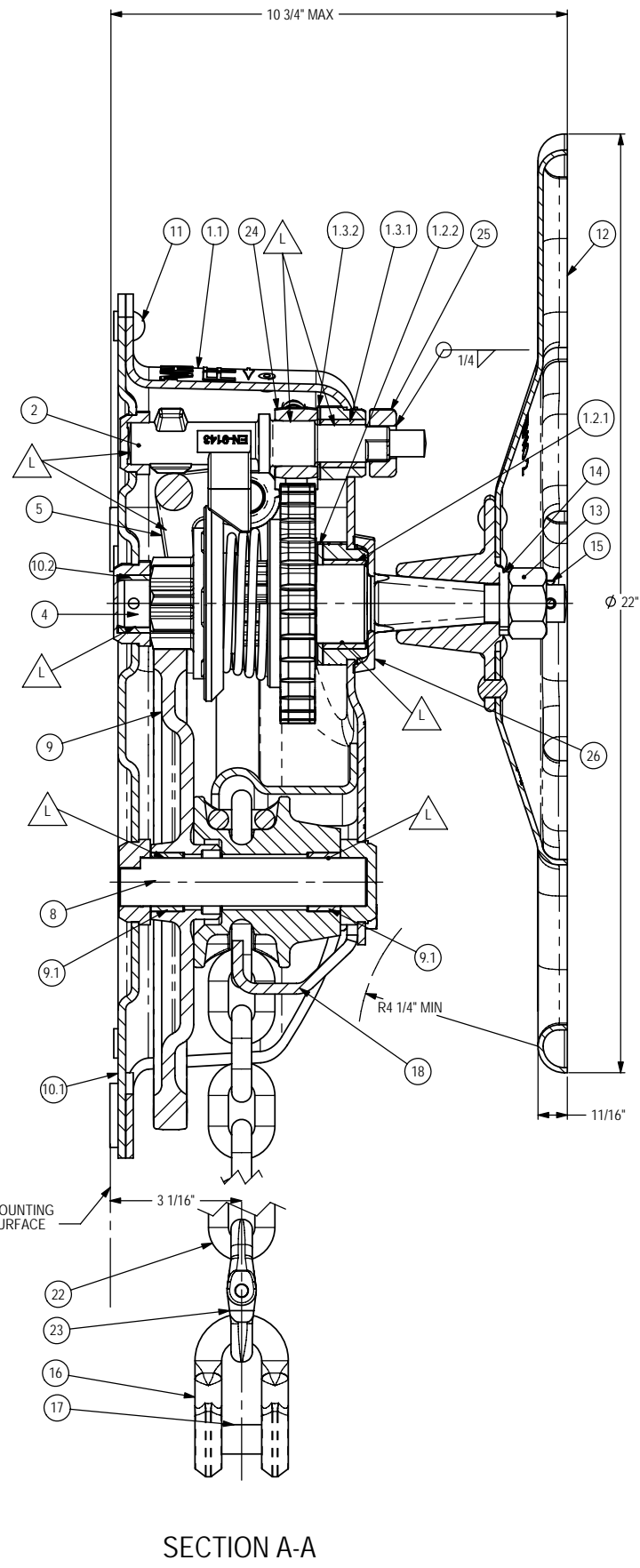
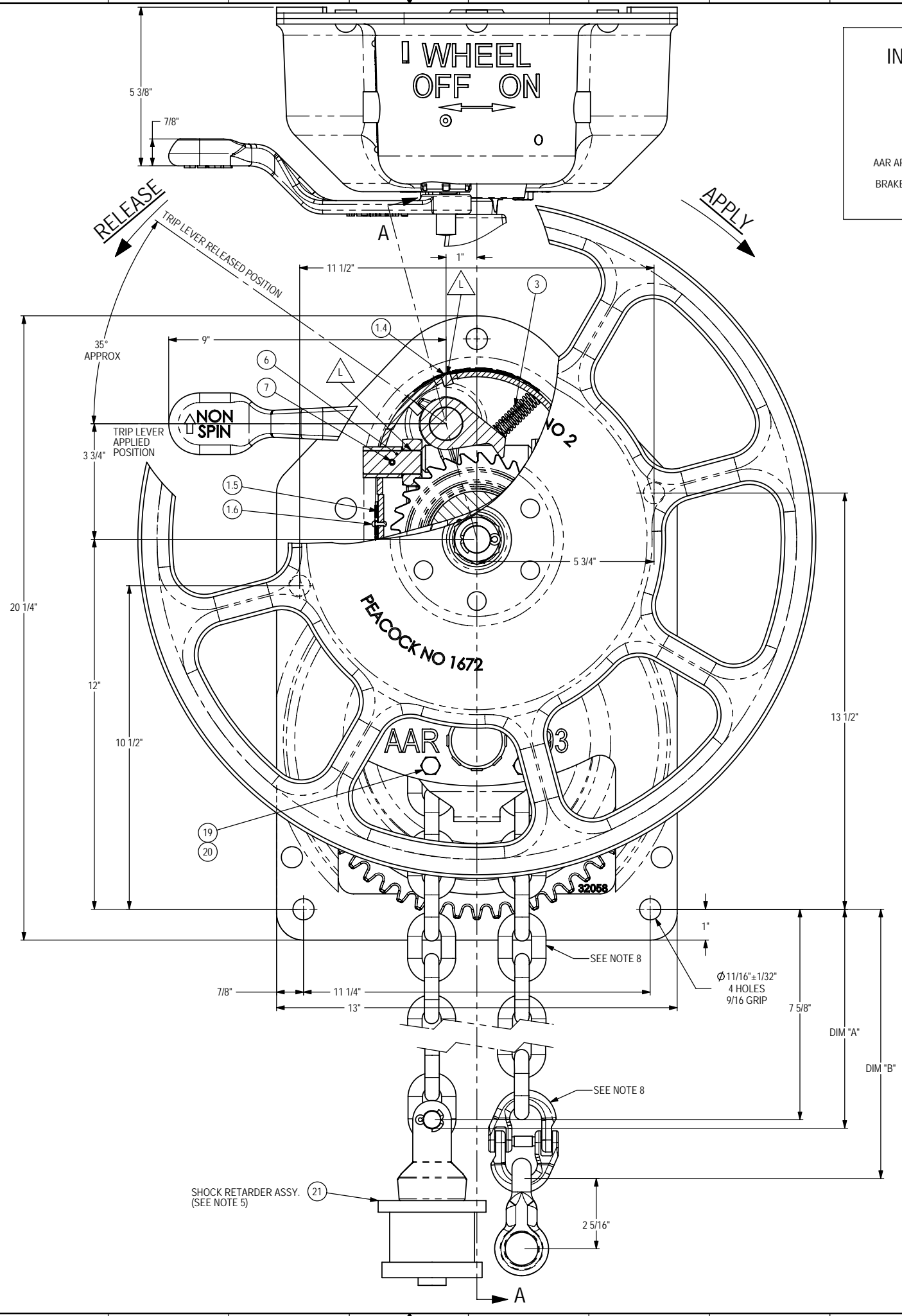
GENERAL DATA

- NOTES:
- WE RECOMMEND HAND BRAKE BE APPLIED TO CAR AFTER BLASTING. WHEN SUBJECTED TO BLASTING, HAND BRAKE MUST BE PROTECTED FROM SHOT OR GRIT MATERIAL. REF. AAR FREIGHT CAR DESIGN SPECIFICATION PARA. 5.2.2
 - BELL CRANK OR SHEAVE FURNISHED AS SPECIFIED. SEE DRAWING D-32235 FOR PROPER INSTALLATION.
 - SEE DRAWING DX-33000 FOR IDENTIFICATION OF PARTS
 - ALL DIMENSIONS ± 1/16 UNLESS OTHERWISE SPECIFIED.
 - SHOCK RETARDER ASSEMBLY CAN BE FURNISHED WITH CHAIN LENGTH AS SPECIFIED. SEE DWG. C-7360 FOR LENGTH VARIATIONS. FOR MOUNTING TO CAR SEE DWG. D-32235.
 - LUBRICATION RESERVOIRS AND LUBRICATING POINTS INDICATED BY 
 - WHEN APPLYING HAND WHEEL, TORQUE NUT TO 160 FT-LBS AND INSERT COTTER THRU SHAFT.
 - THE CHAIN MUST BE INSERTED INTO THE CHAIN DRUM WITH WELD PROJECTING OUT. THE COUPLING LINK MUST BE INSTALLED AS SHOWN IN FRONT VIEW. DIMENSION "A" + "B" = 34 1/8 ± 1/2

ITEM NO.	PART No.	DESCRIPTION	QTY.
26	34562	RUBBER DEFLECTOR	1
25	32275	TRIP LEVER	1
24	4092	HOLDING PAWL	1
23	32234	COUPLING LINK	1
22	32157	CHAIN	1
21	7360	SHOCK RETARDER	1
20	4493-8	NUT	2
19	998-A	SCREW - 3/8-16 X 1	2
18	30693	PRESSED STRIPPER	1
17	240	RIVET	1
16	458	CLEVIS	1
15	4034-9	COTTER PIN	1
14	242	LOCK WASHER	1
13	241	NUT	1
12	1672	HAND WHEEL	1
11	454	RIVET	5
10.2	32071	BEARING	1
10.1	32058	BACK PLATE	1
10	32102	BACKPLATE ASSEMBLY	1
9.1	32071	BEARING	2
9	32172	CHAIN GEAR	1
8	32069	GEAR SHAFT	1
7	1664	ROLL PIN	2
6	9236	YOKE SHAFT	2
5	4622	YOKE ASSEMBLY	1
4	32082	PINION ASSEMBLY	1
3	32075	PAWL SPRING	1
2	9143	CAM SHAFT	1
1.6	3338-1	RIVET	2
1.5	31818	WARNING LABEL	1
1.4	5892	OIL CUP	1
1.3.2	32231-3	FRONT PAWL SHAFT THRUST BEARING	1
1.3.1	32231-4	FRONT PAWL SHAFT BEARING	1
1.3	32231	FRONT PAWL SHAFT BEARING	1
1.2.2	32074-3	BEARING WASHER	1
1.2.1	32074-4	BEARING	1
1.2	32074	PINION BEARING	1
1.1	32072	HOUSING ASSEMBLY	1
1	32103	HOUSING ASSEMBLY	1

BILL OF MATERIALS

	
INTERMEDIATE POWER HAND BRAKE DESIGNATION 33000	
DRAWN: MMM CHECKED: RLC DATE: 4-20-92 SCALE: 1:2	SHEET: 1 OF 1 REV: G



SECTION A-A

THIS DOCUMENT AND ITS CONTENTS ARE UNCLASSIFIED AND PROGRAMS ARE UNCLASSIFIED. THE INFORMATION CONTAINED HEREIN IS UNCLASSIFIED EXCEPT WHERE SHOWN OTHERWISE. DATE 04-23-2008 BY 8260/MMM