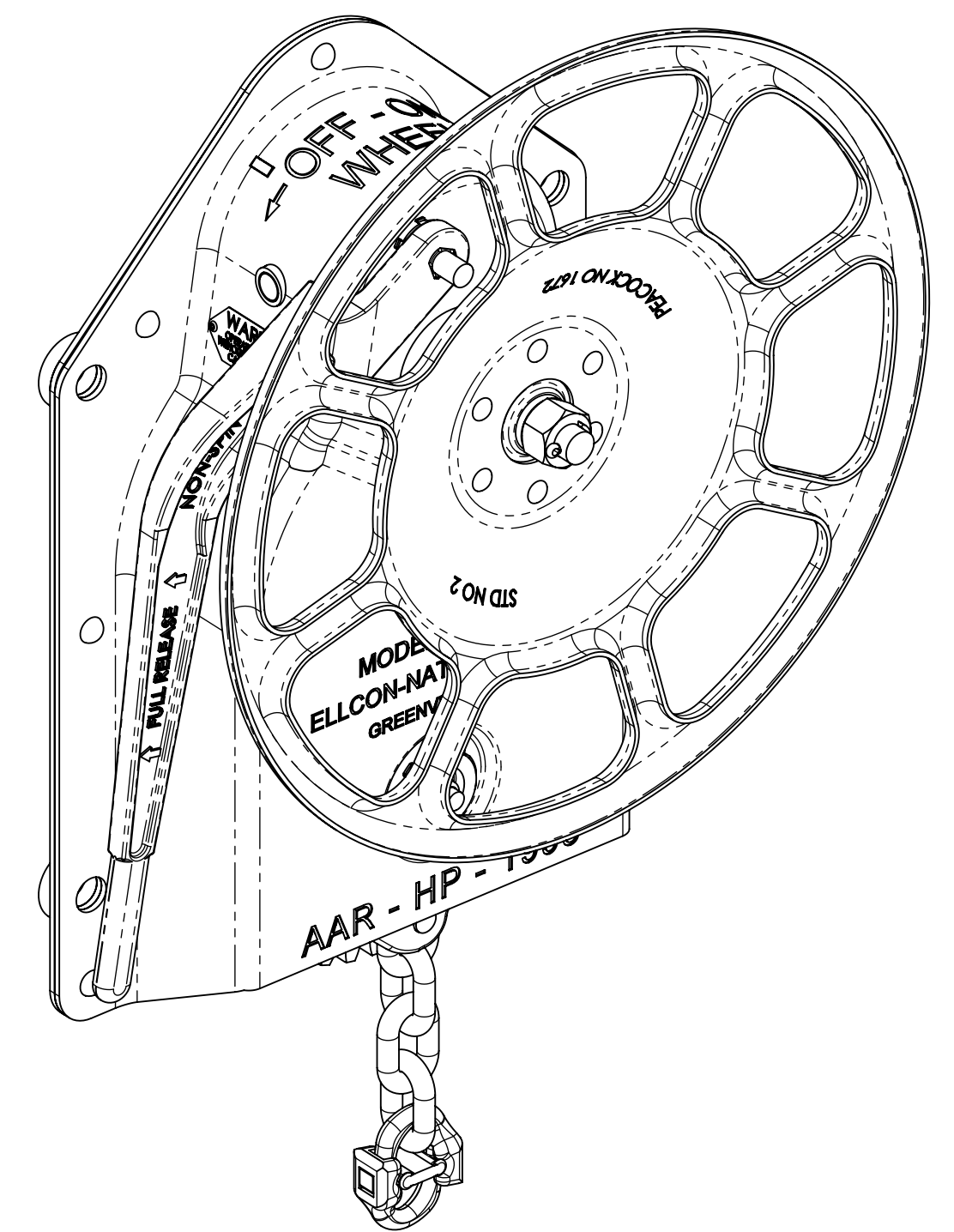
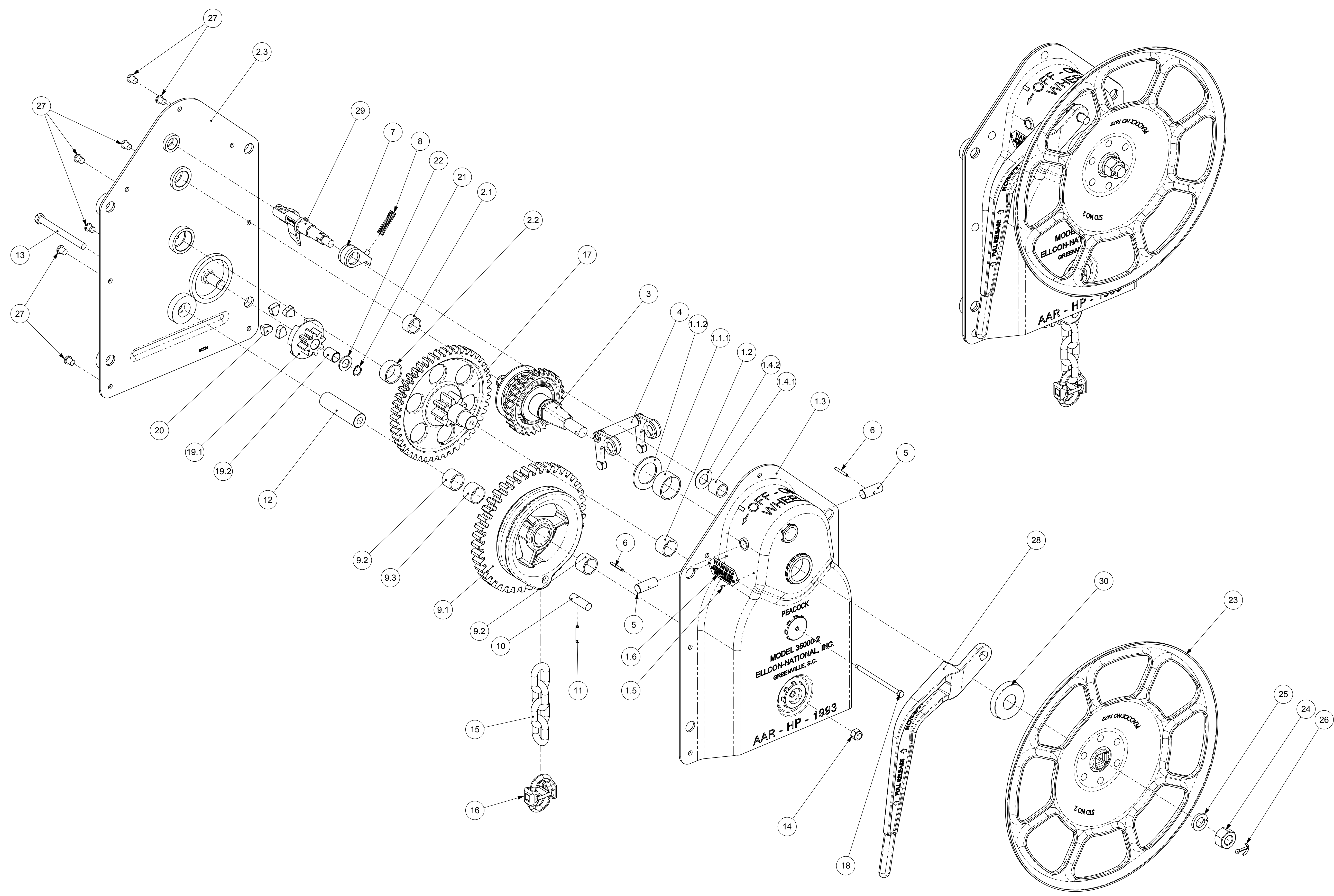


REVISIONS			
REV.	DATE	DESCRIPTION	APPROVED
E	3-17-08	REDRAWN IN SOLIDWORKS, ADDED ITEM 30 PER ECN 8260	RAL



SEE DWG. D-35000-2 FOR ASSEMBLY OF PARTS

QTY.	PART NO.	DESCRIPTION	ITEM NO.
1	32331	HOUSING ASSEMBLY (COMPLETE)	1
1	32074	PINION BEARING	1.1
1	32074-4	BEARING	1.1.1
1	32074-3	BEARING WASHER	1.1.2
1	32285	BEARING	1.2
1	32333	HOUSING	1.3
1	32231	FRONT PAWL SHAFT BEARING	1.4
1	32231-4	FRONT PAWL SHAFT BEARING	1.4.1
1	32231-3	FRONT PAWL SHAFT THRUST BEARING	1.4.2
2	3338-1	1/8 BLIND RIVET	1.5
1	31818	WARNING LABEL	1.6
1	32332	BACK PLATE ASSEMBLY (COMPLETE)	2
1	32071	BEARING	2.1
1	32319	BEARING	2.2
1	32334	BACK PLATE	2.3
1	32082	PINION ASSEMBLY (COMPLETE)	3
1	4622	YOKE ASSEMBLY	4
2	9236	YOKE SHAFT	5
2	1664	ROLL PIN	6
1	4092	HOLDING PAWL	7
1	32075	PAWL SPRING	8
1	32327	CHAIN GEAR ASSEMBLY (COMPLETE)	9
1	32329	CHAIN GEAR ASSEMBLY	9.1
2	32285	BEARING	9.2
1	32294	SPACER	9.3
1	9103	PIN	10
1	3297-6	ROLL PIN	11
1	9104	SHAFT	12
1	3442-123	1/2-13 X 5" LG. HX. HD. BOLT	13
1	4493-2	.50-13 NYLOCK NUT	14
1	9098	CHAIN ASSEMBLY	15
1	1091-A	JOINER	16
1	9105	DOUBLE GEAR ASSEMBLY	17
1	9109	RETAINING BOLT	18
1	9244	CENTR. GOV. ASSY (COMPLETE)	19
1	9094	CENTRIFUGAL GOVERNOR ASSY	19.1
1	9096	BEARING	19.2
4	9097	FRICITION SHOE	20
1	4521-20	RETAINING RING	21
1	9233	3/4 FLAT WASHER	22
1	1672	HAND WHEEL	23
1	241	NUT	24
1	242	LOCK WASHER	25
1	4034-9	COTTER PIN	26
7	454	RIVET	27
1	3107	TRIP LEVER	28
1	9143-1	CAM SHAFT	29
1	34562	RUBBER DEFLECTOR	30

INTERPRET DRAWING IN ACCORDANCE WITH ASME Y14.5
 THIRD ANGLE PROJECTION
 ALL DIMENSIONS ARE IN INCHES UNLESS NOTED
 TOLERANCES/FINISHES UNLESS OTHERWISE NOTED
 DECIMALS: .XX ± .02
 FRACTIONS: XXX ± .010
 ANGLES: ± 2° MACHINED SURFACES
 DRILLED HOLE DIAMETERS: +.010/-01
 BREAK ALL SHARP CORNERS AND EDGES
 CHAMFER ALL TAPPED HOLES 1:16 X ONE THREAD DEEP
 MATERIAL: 50 BEECHTREE BLVD. GREENVILLE, S.C. 29605

ELLCON NATIONAL

**IDENTIFICATION CHART
 MODEL 35000-2 BRAKE**

DRAWN: MMM CHECKED: RLC DATE: 8-10-92 SCALE: 1:4
 REV: E DWG NO: 35000-2

THIS DOCUMENT AND ITS CONTENTS ARE THE PROPERTY OF ELLCON-NATIONAL, INC. AND ARE NOT TO BE REPRODUCED OR TRANSMITTED IN ANY FORM OR BY ANY MEANS, ELECTRONIC OR MECHANICAL, INCLUDING PHOTOCOPYING, RECORDING, OR BY ANY INFORMATION STORAGE AND RETRIEVAL SYSTEM. THE INFORMATION CONTAINED HEREIN IS FOR YOUR INFORMATION ONLY AND IS NOT TO BE USED AS A SUBSTITUTE FOR THE ORIGINAL DRAWING. THE INFORMATION CONTAINED HEREIN IS NOT TO BE USED AS A SUBSTITUTE FOR THE ORIGINAL DRAWING. THE INFORMATION CONTAINED HEREIN IS NOT TO BE USED AS A SUBSTITUTE FOR THE ORIGINAL DRAWING.