

CERTIFIED HORIZONTAL FORCES & CHAIN TRAVEL			
AAR STD. BELL CRANK & SHEAVE	E-N PART NO.	MUNIMUM AVG. FORCE RATING	CERTIFIED HORIZ. CHAIN TRAVEL (REF. AAR MANUAL E-22 PARA. 13)
55 B.C.	456	3925	6 - 12
63 B.C.	1698	5000	4 - 9
66 B.C.	3286	4700	4 3/8 - 13 5/8
SHEAVE	S-7012	3350	4 - 16

REVISIONS				
ZONE	REV.	DATE	DESCRIPTION	APPROVED
	J	11/30/2007	REDRAWN IN SOLIDWORKS, ADDED ITEM 22 PER EGN 8176	RAL

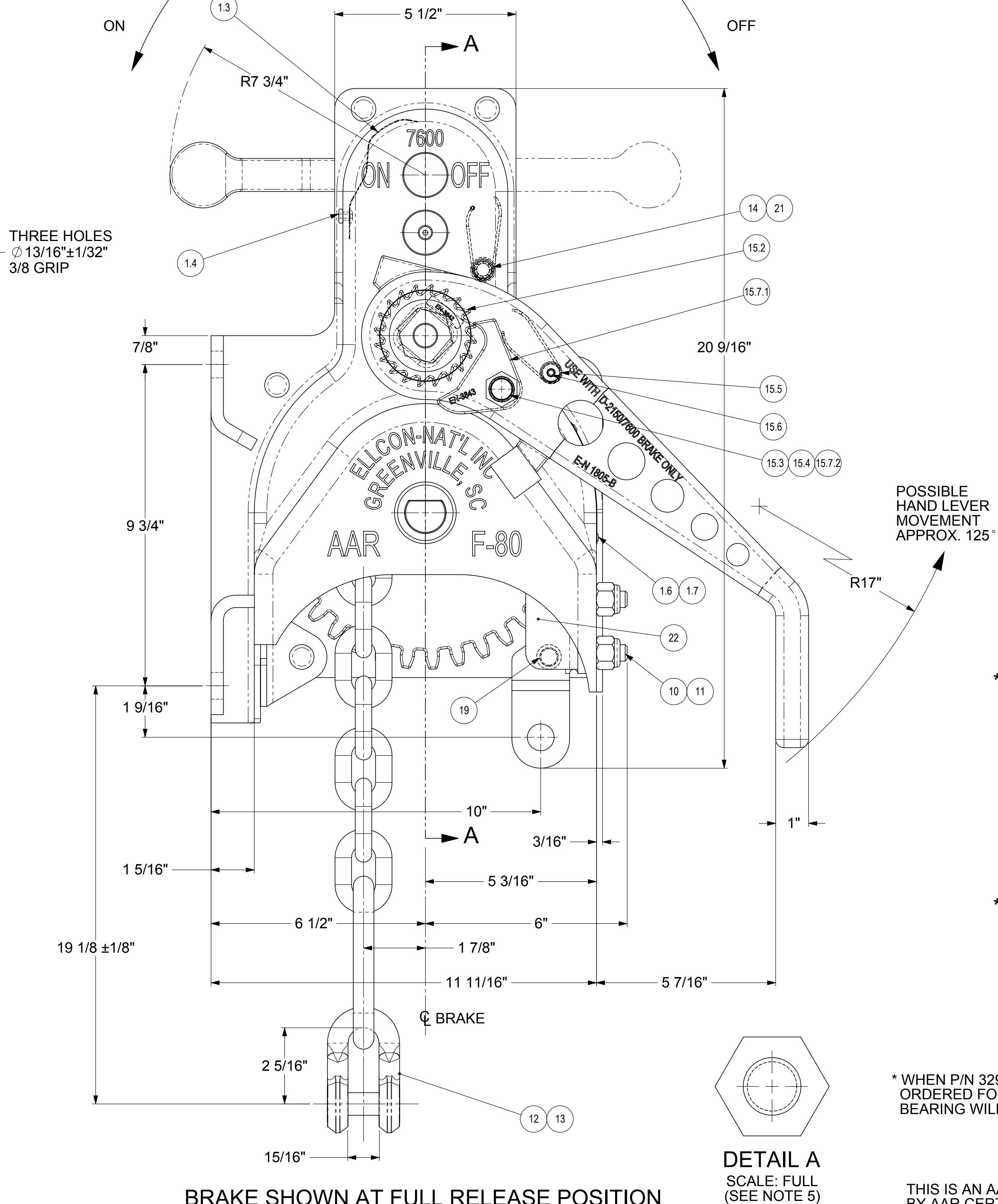
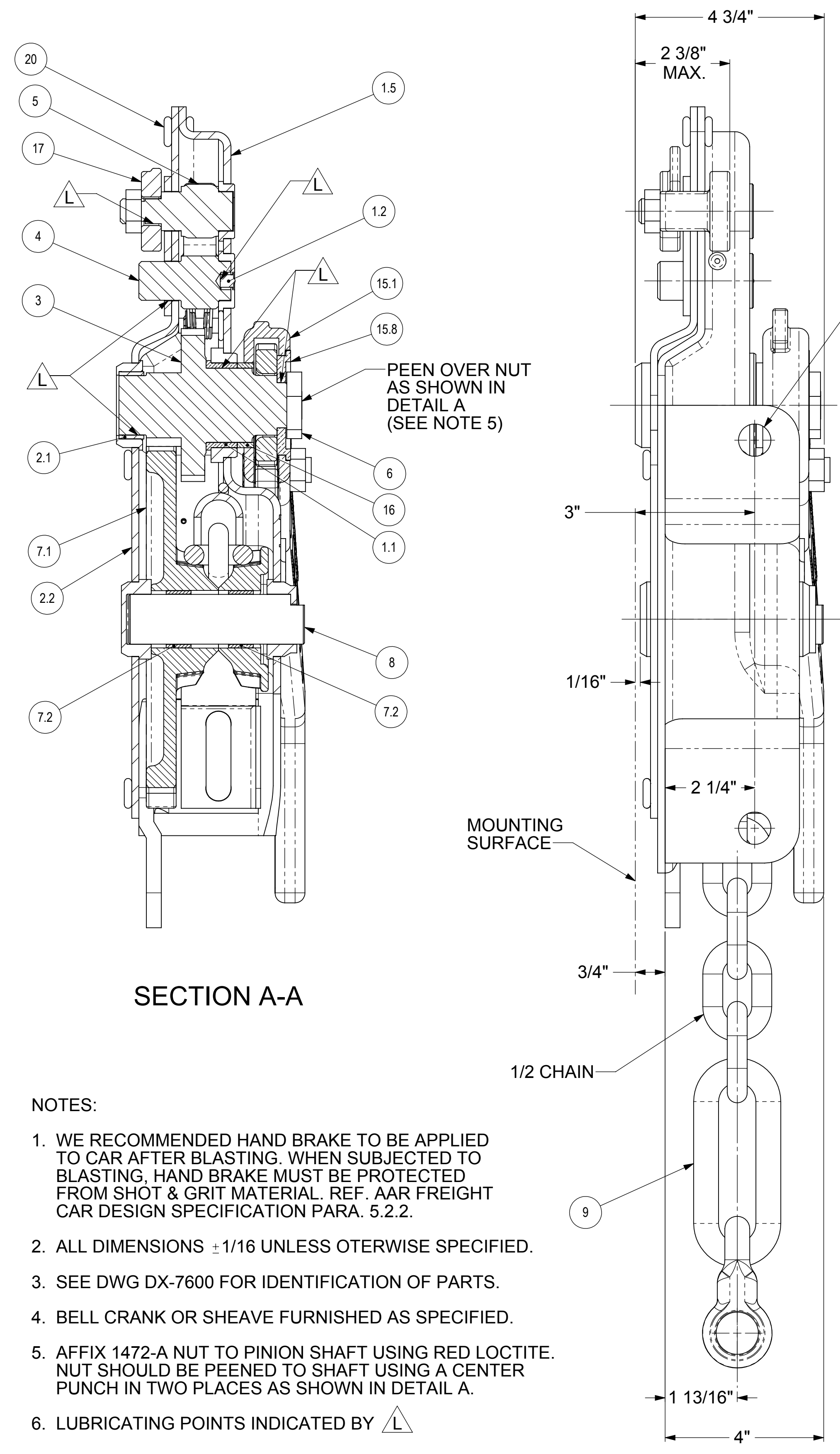
**GENERAL DATA**

BRAKE FURNISHED IN MALLEABLE IRON AND STEEL CONSTRUCTION, COATED WITH BLACK PRIMER

HORIZONTAL CHAIN TRAVEL WITH SHEAVE AND STANDARD CHAIN SHOWN (MAX.) - 20"

APPROXIMATE WEIGHT - 65 LBS

QTY.	PART NUMBER	DESCRIPTION	ITEM NO.
1	8385	HOUSING ASSEMBLY	1
1	8296	BEARING	1.1
1	5892	OIL CUP	1.2
1	9363	SPRING CAM SHAFT	1.3
1	3669-8	RIVET	1.4
1	7780-1	HOUSING	1.5
2	3338-1	1/8 BLIND RIVET	1.6
1	31818	WARNING TAG	1.7
1	7990	BACK PLATE ASSEMBLY	2
1	8399	BEARING	2.1
1	7518	BACK PLATE	2.2
1	1723-D	PINION	3
1	1720	HOLDING PAWL	4
1	1721	CAM	5
1	1472-A	NUT	6
1	7765	CHAIN GEAR ASSEMBLY	7
1	7517	CHAIN GEAR	7.1
2	8378	BEARING	7.2
1	7448	SHAFT	8
1	8402	CHAIN	9
1	7476	U-BOLT	10
2	4493-29	1/2-13 LOCK NUT	11
1	458	CLEVIS	12
1	240	RIVET	13
1	9088	HOLDING PAWL SPRING	14
*	32968	HAND LEVER ASSEMBLY	15
1	1805-B	HAND LEVER	15.1
1	3842	RATCHET	15.2
1	4507	SHAFT	15.3
1	3443-1	NUT	15.4
1	1726	SPRING	15.5
1	1437	1/4 DIA X 1 1/8 L ROLL PIN	15.6
1	6443	PAWL ASSEMBLY	15.7
1	3843	PAWL	15.7.1
1	4477	BEARING	15.7.2
1	32835-1	RETAINER	15.8
*	33686	BEARING	16
1	1722	TRIP LEVER	17
1	3443-1	NUT	18
1	3208-4	RIVET	19
5	3208-16	RIVET	20
1	4049-1	SPRING RETAINING PUSH NUT	21
1	35467	CHAIN BRACKET	22
	SEE NOTE 4	BELL CRANK OR SHEAVE	



- NOTES:
1. WE RECOMMENDED HAND BRAKE TO BE APPLIED TO CAR AFTER BLASTING. WHEN SUBJECTED TO BLASTING, HAND BRAKE MUST BE PROTECTED FROM SHOT & GRIT MATERIAL. REF. AAR FREIGHT CAR DESIGN SPECIFICATION PARA. 5.2.2.
  2. ALL DIMENSIONS  $\pm 1/16$  UNLESS OTHERWISE SPECIFIED.
  3. SEE DWG DX-7600 FOR IDENTIFICATION OF PARTS.
  4. BELL CRANK OR SHEAVE FURNISHED AS SPECIFIED.
  5. AFFIX 1472-A NUT TO PINION SHAFT USING RED LOCTITE. NUT SHOULD BE PEENED TO SHAFT USING A CENTER PUNCH IN TWO PLACES AS SHOWN IN DETAIL A.
  6. LUBRICATING POINTS INDICATED BY  $\Delta$

\* WHEN P/N 32968 HAND LEVER ASS'Y IS ORDERED FOR SPARE PARTS, P/N 33686 BEARING WILL BE SUPPLIED WITH IT.

**ELLCON NATIONAL**  
50 BEECHTREE BLVD. GREENVILLE, S.C. 29605

**MODEL 7600 BRAKE**

SCALE: 1:2 DATE: 2-16-82 REV. J

DRAWN: PR CHECKED: DMS

**D-7600**

THIS IS AN AAR F-80 BRAKE COVERED BY AAR CERTIFICATE NO. 72