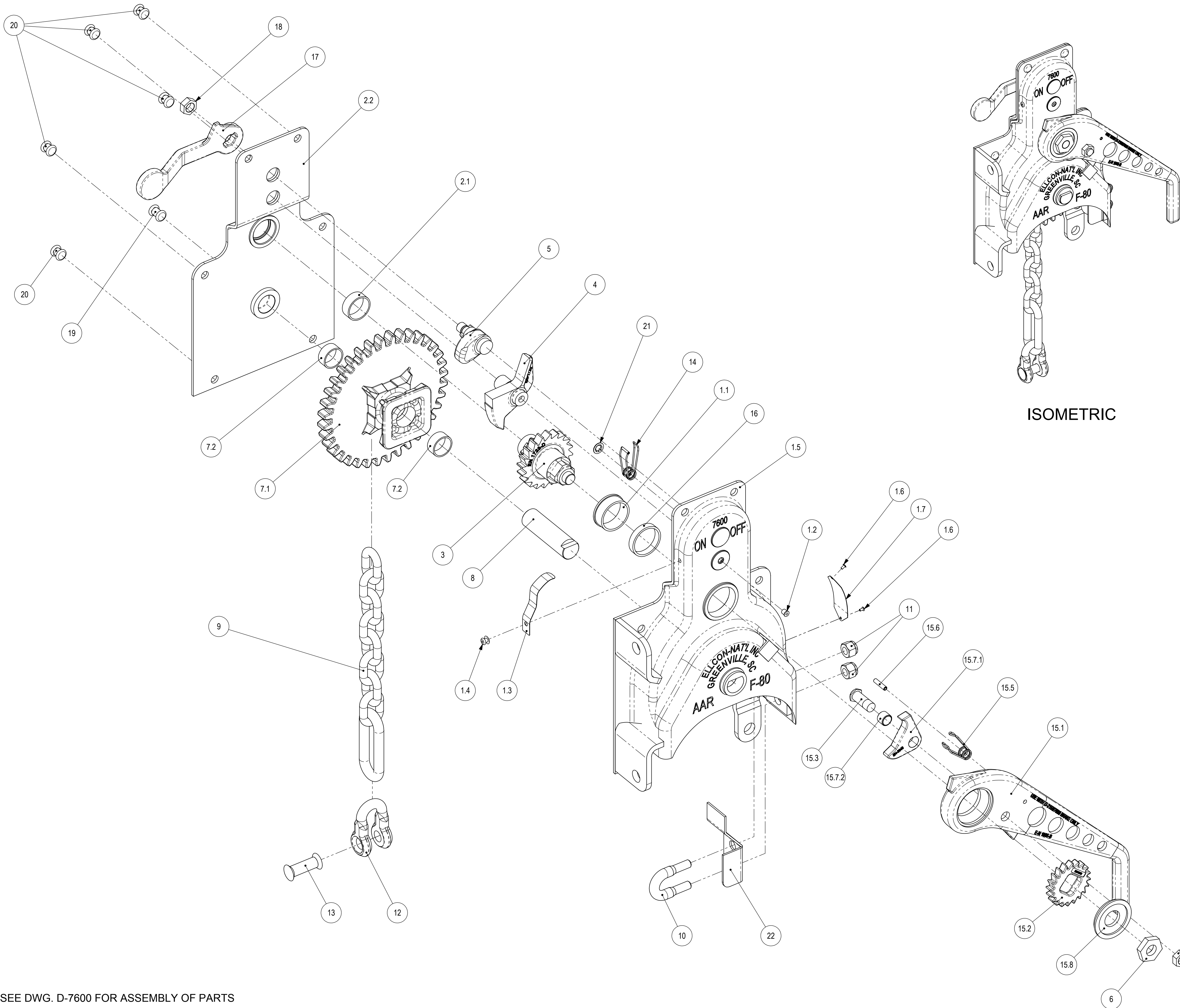
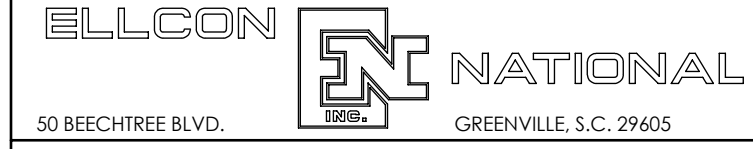


REVISIONS				
ZONE	REV.	DATE	DESCRIPTION	APPROVED
F		12/3/2007	REDRAWN IN SOLIDWORKS, ADDED ITEM 22 PER ECN 8176	RAL



ISOMETRIC

QTY.	PART NUMBER	DESCRIPTION	ITEM NO.
1	8385	HOUSING ASSEMBLY	1
1	8296	BEARING	1.1
1	5892	OIL CUP	1.2
1	9363	SPRING CAM SHAFT	1.3
1	3669-8	RIVET	1.4
1	7780-1	HOUSING	1.5
2	3338-1	1/8 BLIND RIVET	1.6
1	31818	WARNING TAG	1.7
1	7990	BACK PLATE ASSEMBLY	2
1	8399	BEARING	2.1
1	7518	BACK PLATE	2.2
1	1723-D	PINION	3
1	1720	HOLDING PAWL	4
1	1721	CAM	5
1	1472-A	NUT	6
1	7765	CHAIN GEAR ASSEMBLY	7
1	7517	CHAIN GEAR	7.1
2	8378	BEARING	7.2
1	7448	SHAFT	8
1	8402	CHAIN	9
1	7476	U-BOLT	10
2	4493-29	1/2-13 LOCK NUT	11
1	458	CLEVIS	12
1	240	RIVET	13
1	9088	HOLDING PAWL SPRING	14
1	32968	HAND LEVER ASSEMBLY	15
1	1805-B	HAND LEVER	15.1
1	3842	RATCHET	15.2
1	4507	SHAFT	15.3
1	3443-1	NUT	15.4
1	1726	SPRING	15.5
1	1437	1/4 DIA X 1 1/8 L ROLL PIN	15.6
1	6443	PAWL ASSEMBLY	15.7
1	3843	PAWL	15.7.1
1	4477	BEARING	15.7.2
1	32835-1	RETAINER	15.8
1	33686	BEARING	16
1	1722	TRIP LEVER	17
1	3443-1	NUT	18
1	3208-4	RIVET	19
5	3208-16	RIVET	20
1	4049-1	SPRING RETAINING PUSH NUT	21
1	35467	CHAIN BRACKET	22



**IDENTIFICATION CHART  
MODEL 7600 BRAKE**

SCALE	NONE	DATE	3-15-82	REV.	
DRAWN	PR	<b>DX-7600</b>		<b>F</b>	
CHECKED	DMS				

SEE DWG. D-7600 FOR ASSEMBLY OF PARTS