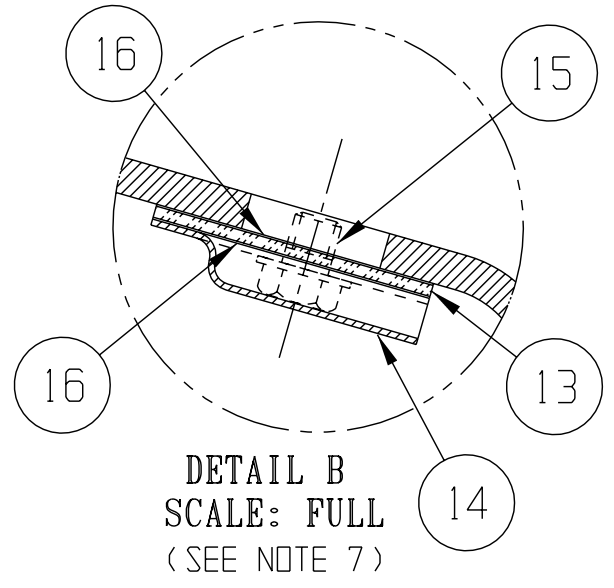


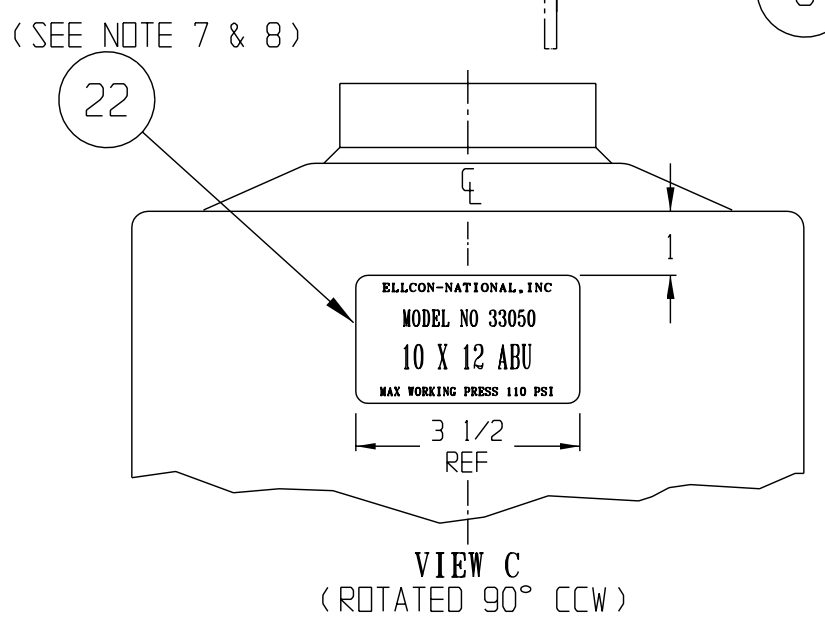
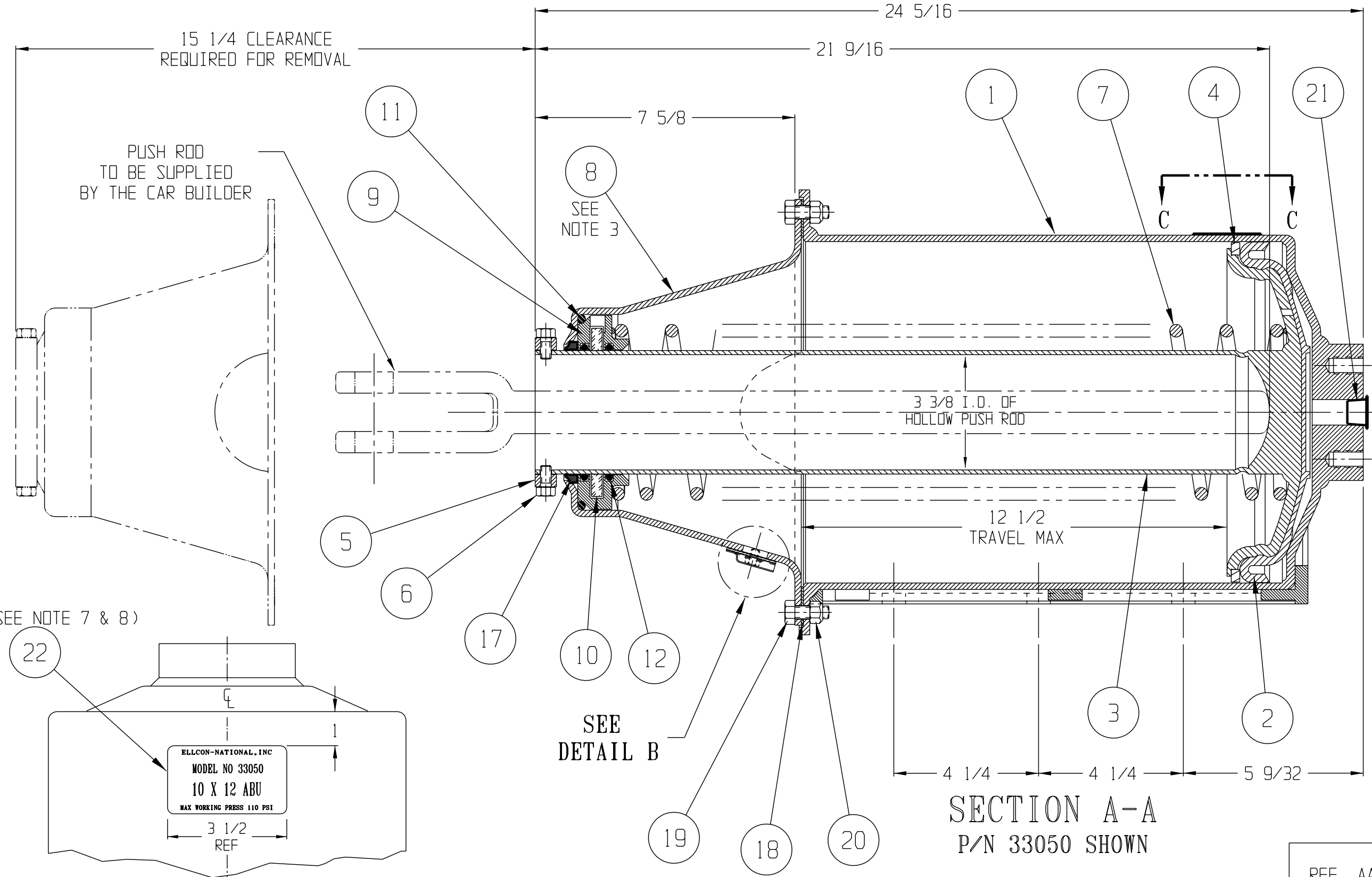
- NOTES:
- 1- INTERIOR MUST BE CLEAN & FREE OF DIRT, GRIT, METAL CHIPS & FOREIGN MATTER.
 - 2- APPLY BRAKE CYLINDER GREASE PER (AAR SPEC. M-914) TO ALL INTERIOR SURFACES OF CYLINDER WELDMENT (ITEM 1) AND TO SURFACES OF SPRING (ITEM 7) BEFORE ADDING PISTON ASSY (IT.2-4).
 - 3- AFTER BOLTING TOGETHER, NON-PRESSURE HEAD (ITEM 8) MUST SEAT TIGHT INTO C'BORE OF CYLINDER WELDMENT (ITEM 1). TORQUE NUTS (IT. 20 TO 30-35 FT LBS.
 - 4- ALL DIMENSIONS ARE NOMINAL.
 - 5- FINISH: A)- CYLINDER AND PISTON ARE ELECTROLESS NICKEL COATED.
B)- NON-PRESSURE HEAD IS BLACK EPOXY ELECTROSTATIC SPRAY COATED.
 - 6- FOR ASSEMBLY ORIENTATION OF P/N'S 33050 AND 33050-1 SEE DWG C-34080 AND FOR P/N'S 33050-2 AND 33050-3 SEE DWG C-34630.
 - 7- CARBUILDER TO REMOVE PROTECTIVE TAPE FROM NAME PLATE AND VENT AFTER SANDBLAST AND PAINT.
 - 8- ABU MANUFACTURED BY FTIL-INDIA WILL HAVE A DIFFERENT NAME PLATE (IT. 22) P/N 35316-1, 35316-2, 35316-9, 31316-10.

REVISIONS			
LTR	DATE	DESCRIPTION	BY
Q	05/10/05	DELETED P/N 8895-8. ADDED P/N 33053-1 AND DATE BUILT LOCATION. RELOCATED IT 22 FROM NON PRESSURE HEAD TO TOP OF CYLINDER. REARRANGED P/N'S 17 THRU 22. NAME PLATE SHOWN WAS 33053-2. PER ECN #6221	PS
R	06/03/05	ADDED 2" DIA "NO NICKS OR SCRATCHES..." AREA AND NOTE. PER ECN #6286	PS
S	08/03/05	ADDED P/N 33050-2 AND 33050-3 TO THE B.M. PER ECN #6421	PS
T	12-20-05	ADDED NOTE 7. PER ECN 6669	RAL
U	10-30-06	ADDED TORQUE SPEC TO NOTE 3, NOTE 8 & REF AAR SPECS. MOVED DATE BUILT LOCATION TO FOOT PER ECN 7321	RAL
V	04/21/08	ITEM 1 (P/N 35480) WAS 33040. MOVED NAME PL LOCATION TO BACK OF CYLINDER. ECN #8435	PS
W	04/30/08	REMOVED THE "DATE BUILT STAMP LOCATION". PER ECN #8506.	PS



NO NICKS OR SCRATCHES WITHIN THIS 2" DIA AREA

**	1	-	-	-	33053-10	NAME PLATE	ALUMINUM	-
**	-	1	-	-	33053-9	NAME PLATE	ALUMINUM	-
**	-	-	1	-	33053-2	NAME PLATE	ALUMINUM	-
**	-	-	-	1	33053-1	NAME PLATE (SHOWN)	ALUMINUM	22
	1	1	1	1	4087-15	PLASTIC PROTECTOR (FOR SHIPPING)	PLASTIC	21
	8	8	8	8	31076-4	STOVER LOCKNUT 3/8-16	ZINC PLTD	20
	8	8	8	8	3442-204	BOLT 3/8-16 X 1	CAD PLTD	19
	1	1	1	1	33478	GASKET	NEOPRENE	18
	1	1	1	1	34274	WIPER	MOLYTHANE	17
	2	2	2	2	9324	SCREENING	ALUMINUM	16
	2	2	2	2	3978-1	SCREW 1/4-20 X 9/32	ZINC PLTD	15
	1	1	1	1	31564	VENT PLATE	ALUMINUM	14
	1	1	1	1	9323	FELT	FELT	13
	-	-	-	-	31855	VENT ASSEMBLY	-	-
	2	2	2	2	3918-44	O-RING	BUNA N	12
	1	1	1	1	3918-45	O-RING	BUNA N	11
	1	1	1	1	31607	FELT	FELT	10
	1	1	1	1	31606	RETAINER	DELTRIN	9
	-	-	-	-	31608	SEAL ASSEMBLY	-	-
	1	1	1	1	34872	NON-PRESSURE HEAD	STEEL	8
	-	-	-	-	33670	NON-PRESSURE HEAD ASSEMBLY	-	-
	1	1	1	1	33046	SPRING	STEEL	7
	2	2	2	2	3442-72	BOLT 5/16-18 X 5/8	ZINC PLTD	6
	1	1	1	1	33553	COLLAR	STEEL	5
	1	1	1	1	9821	WEAR RING	DELTRIN	4
	1	1	1	1	33039	PISTON	STEEL	3
	1	1	1	1	5098	PACKING CUP	RUBBER	2
	-	-	-	-	33044	PISTON ASSEMBLY	-	-
	-	-	-	-	34086	NON-PRESSURE HEAD/HOLLOW ROD/SPRING/PISTON	-	-
	1	1	1	1	35480	CYLINDER WELDMENT	STEEL	1
*	-	-	-	-	33050-3	10X12 ABU SIDE MOUNT RT.	-	-
*	-	-	-	-	33050-2	10X12 ABU SIDE MOUNT LT.	-	-
*	-	-	-	-	33050-1	10X12 ABU (OPPOSITE MOUNTING)	-	-
*	-	-	-	-	33050	10X12 ABU (AS SHOWN)	-	-



SECTION A-A
P/N 33050 SHOWN

* SEE NOTE 6
** SEE NOTE 8
EST. WT. = 95 LBS

REF. AAR SPECS:
M-914 S-400
S-4004

THIS DOCUMENT AND ITS CONTENTS CONTAIN CONFIDENTIAL AND PROPRIETARY INFORMATION OWNED BY ELLCON-NATIONAL, INC AND IT AND ALL COPIES THEREOF ARE TO BE RETURNED TO ELLCON-NATIONAL WHEN SO REQUESTED. THIS DOCUMENT OR ANY PART THEREOF SHALL NOT BE REPRODUCED, COPIED, OR TRANSMITTED ELECTRONICALLY. THE INFORMATION CONTAINED HEREIN SHALL NOT BE DISCLOSED BY THE RECIPIENT TO OTHERS OR USED BY RECIPIENT WITHOUT THE PRIOR WRITTEN CONSENT SPECIFIC TO EACH CASE BY ELLCON-NATIONAL, INC.

ELLCON NATIONAL
50 BEECHTREE BLVD. GREENVILLE, S.C. 29605

10 x 12 ABU BRAKE CYLINDER ASSY

SCALE	1/3	DATE	8-26-94	REV.	
DRAWN	PAB	C-33050		W	
CHECKED	P. SOPT				