

REVISIONS			
REV	DATE	DESCRIPTION	ECN BY
K	04-07-2008	REDRAWN, ADDED 34562	8260 MMM

CONVENTIONAL HAND BRAKE

AAR FIELD MANUAL GROUP "N"
NON-SPIN VERTICAL WHEEL
GRADUAL RELEASE

AAR APPROVED VERTICAL CHAIN TRAVEL THRU 18"
BRAKES FURNISHED COATED WITH BLACK PRIMER

GENERAL DATA

NOTES:

- WE RECOMMEND HAND BRAKE BE APPLIED TO CAR AFTER BLASTING. WHEN SUBJECTED TO BLASTING, HAND BRAKE MUST BE PROTECTED FROM SHOT OR GRIT MATERIAL. REF. AAR FREIGHT CAR DESIGN SPECIFICATION PARA. 5.2.2
- BELL CRANK OR SHEAVE FURNISHED AS SPECIFIED.
- SEE DRAWING DX-31000-6 FOR IDENTIFICATION OF PARTS
- ALL DIMENSIONS ± 1/16 UNLESS OTHERWISE SPECIFIED.
- LUBRICATION RESERVOIRS AND LUBRICATING POINTS INDICATED BY
- WHEN APPLYING HAND WHEEL, TORQUE NUT TO 160 FT-LBS AND INSERT COTTER THRU SLOT IN NUT AND HOLE IN SHAFT.
- COAT TEETH OF GEARS WITH A HI-GRAPHITE DRY LUBRICANT AS INDICATED BY

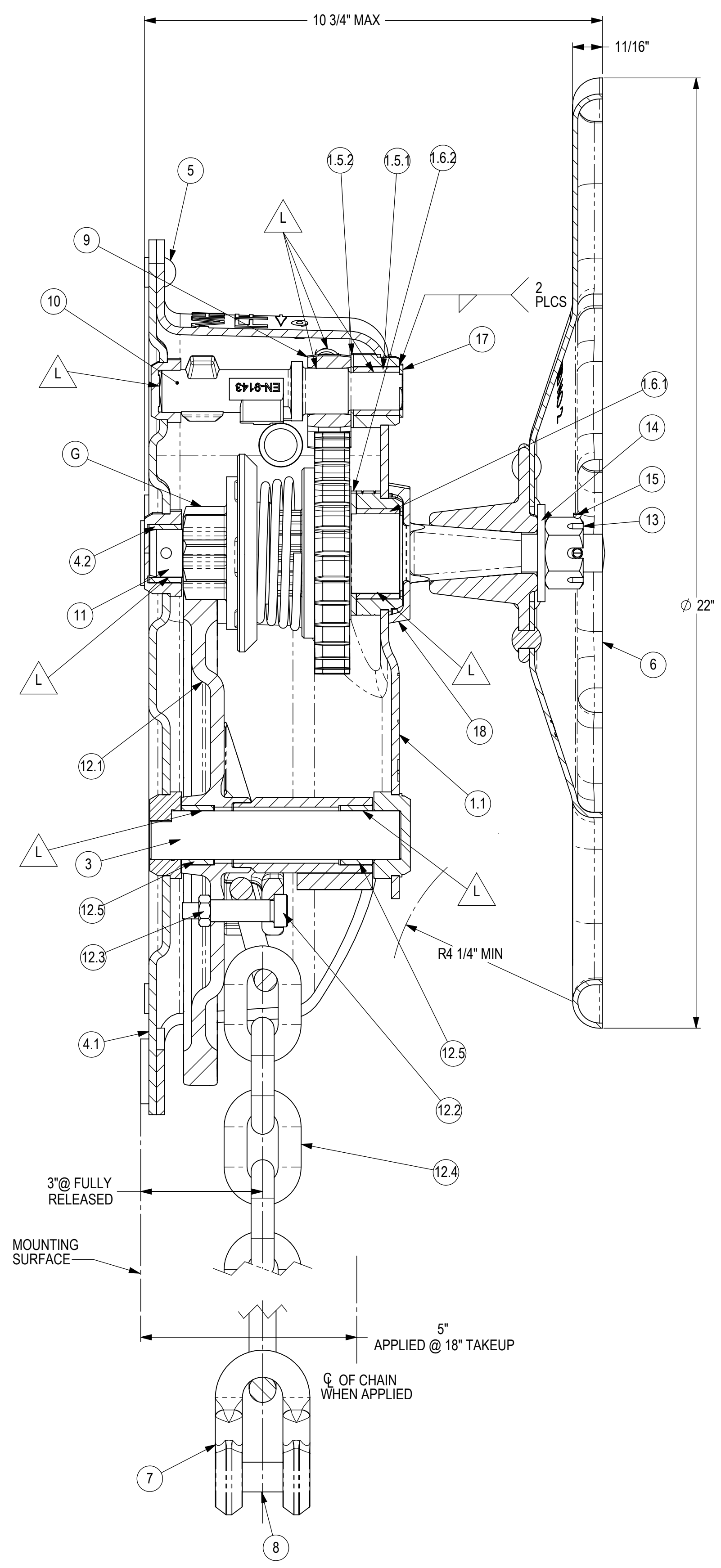
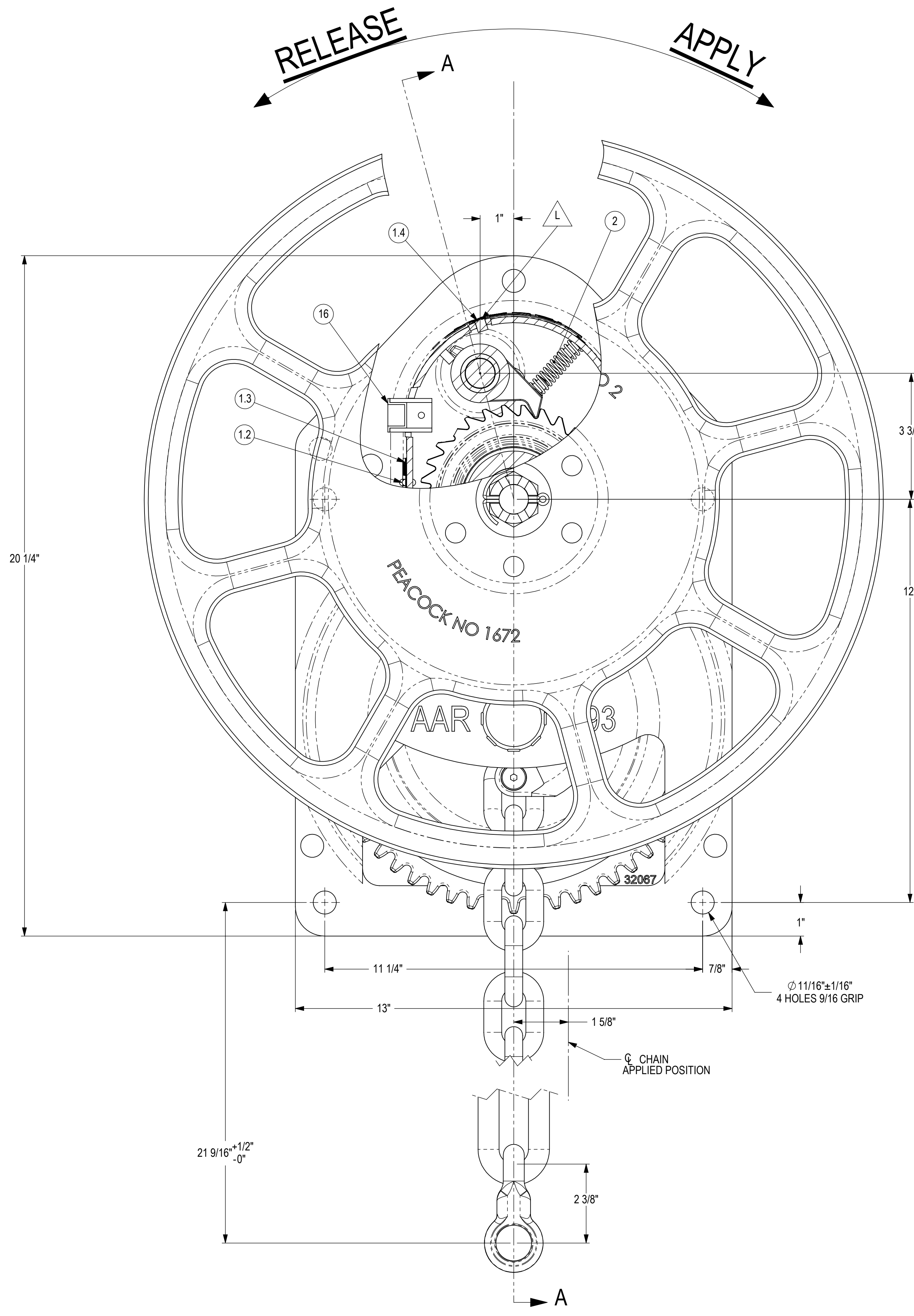
ITEM NO.	PART NO.	DESCRIPTION	QTY.
18	34562	RUBBER DEFLECTOR	1
17	778	WASHER	1
16	4087-15	PLASTIC PLUG	2
15	4034-15	COTTER PIN	1
14	569-A	WASHER	1
13	1478	NUT	1
12.5	32071	BEARING	2
12.4	32786	CHAIN	1
12.3	3443-53	HEX NUT	1
12.2	5340-4	SHOULDER BOLT	1
12.1	32787	GEAR & CHAIN DRUM ASSEMBLY	1
12	32788	CHAIN DRUM ASSEMBLY	1
11	32082-2	PINION ASSEMBLY	1
10	32291	SHAFT	1
9	4092	HOLDING PAWL	1
8	240	RIVET	1
7	458	CLEVIS	1
6	1672	HAND WHEEL	1
5	454	RIVET	5
4.2	32071	BEARING	1
4.1	32067	BACK PLATE ASSEMBLY	1
4	32095	BACK PLATE ASSEMBLY	1
3	32069	GEAR SHAFT	1
2	32075	PAWL SPRING	1
1.6.2	32074-3	BEARING WASHER	1
1.6.1	32074-4	BEARING	1
1.6	32074	PINION BEARING	1
1.5.2	32231-3	FRONT PAWL SHAFT THRUST BEARING	1
1.5.1	32231-4	FRONT PAWL SHAFT BEARING	1
1.5	32231	FRONT PAWL SHAFT BEARING	1
1.4	5892	OIL CUP	1
1.3	31818	WARNING LABEL	1
1.2	3338-1	RIVET	2
1.1	32068	PRESSED STEEL HOUSING	1
1	32083	HOUSING	1

CONVENTIONAL HAND BRAKE DESIGNATION 31000-6

INTERPRET DRAWING IN ACCORDANCE WITH ASME Y14.5	THIRD ANGLE PROJECTION
ALL DIMENSIONS ARE IN INCHES UNLESS NOTED	
TOLERANCES/FINISHES UNLESS OTHERWISE NOTED	
DECIMALS: .xxx ±	FRACTIONS: 1/16 ±
ANGLES: ±	DRILLED HOLE DIAMETERS: +0.010/-0.01
BREAK ALL SHARP CORNERS AND EDGES	
CHECK ALL TAPPED HOLES: 1/8" X ONE THREAD DEEP	
MATERIAL	
EST. WT. 83 LBS	

DRAWN	MMM	CHECKED	RLC	DATE	4-30-92	SCALE	1:2
SHEET	1	OF	1	REV			

D 31000-6 K



SECTION A-A

BRAKE SHOWN IN FULL RELEASE POSITION

THIS DOCUMENT AND ITS CONTENTS ARE UNCLASSIFIED AND IN THE PUBLIC DOMAIN. IT IS THE PROPERTY OF AAR AND IS LOANED TO YOU BY AAR. IT IS TO BE RETURNED TO AAR UPON REQUEST. IT IS NOT TO BE REPRODUCED OR TRANSMITTED IN ANY FORM OR BY ANY MEANS, ELECTRONIC OR MECHANICAL, INCLUDING PHOTOCOPYING, RECORDING, OR BY ANY INFORMATION STORAGE AND RETRIEVAL SYSTEM, WITHOUT PERMISSION IN WRITING FROM AAR. AAR FREIGHT CAR DESIGN SPECIFICATION PARA. 5.2.2