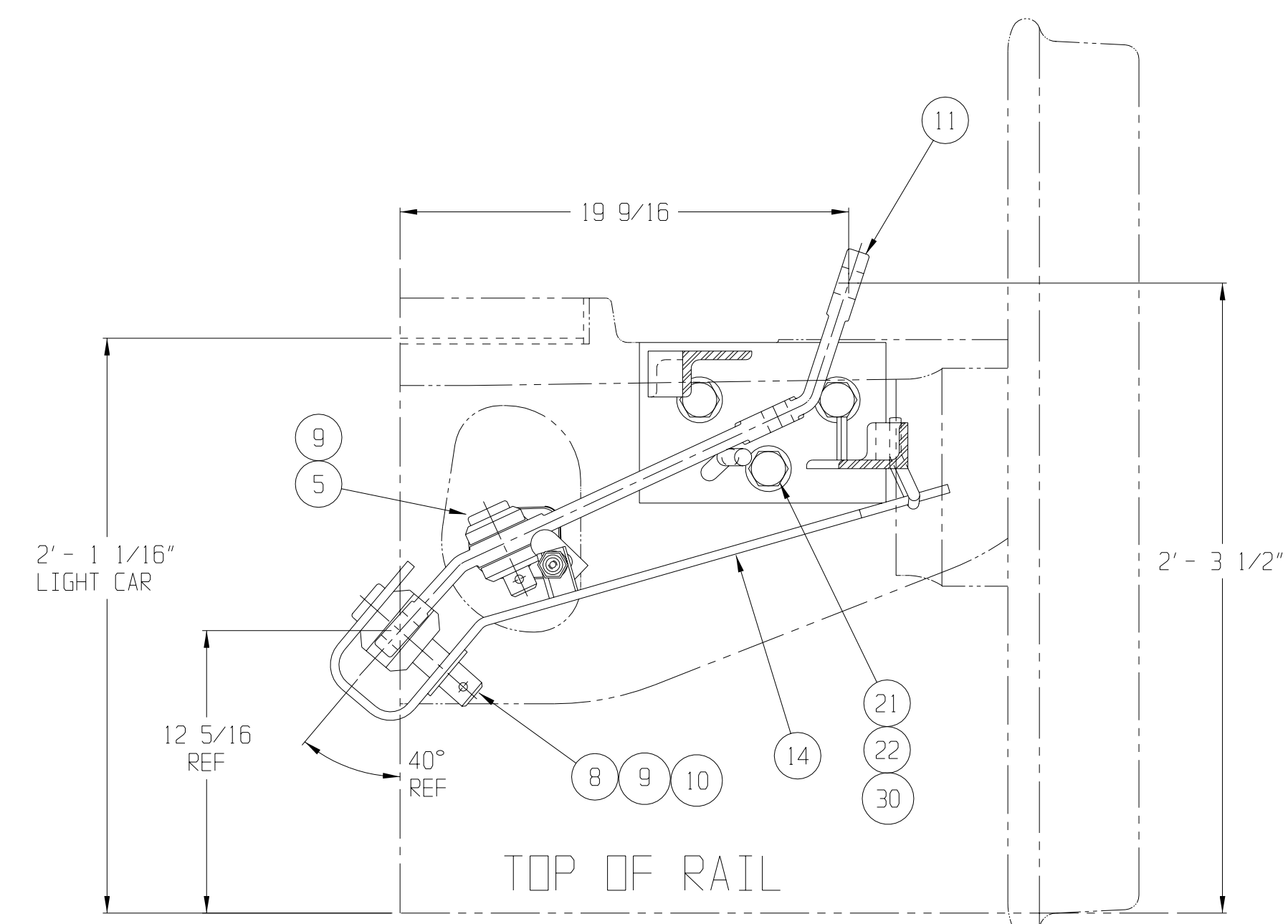
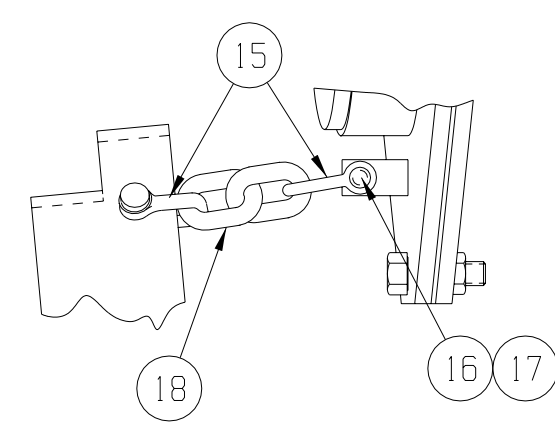
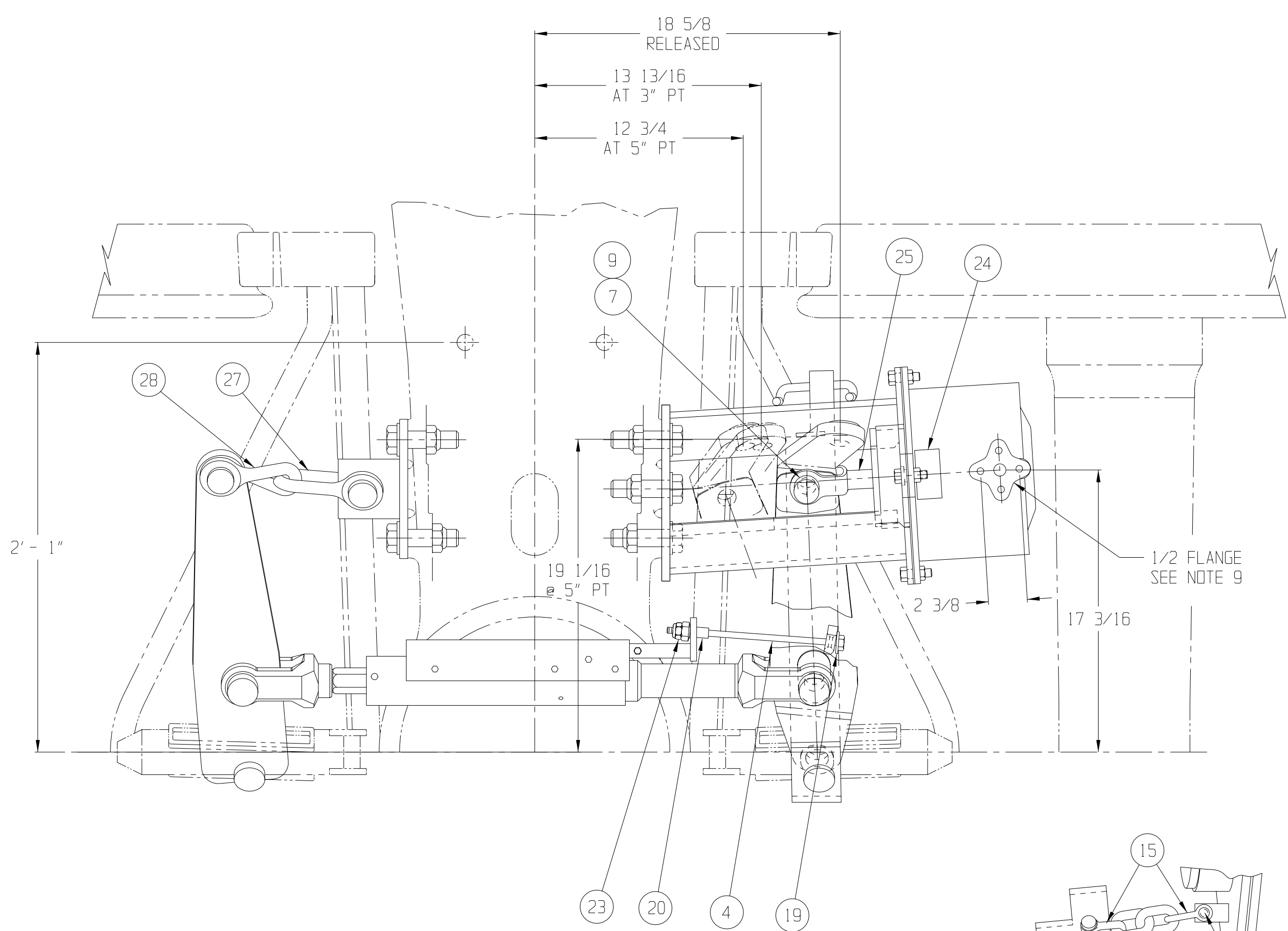


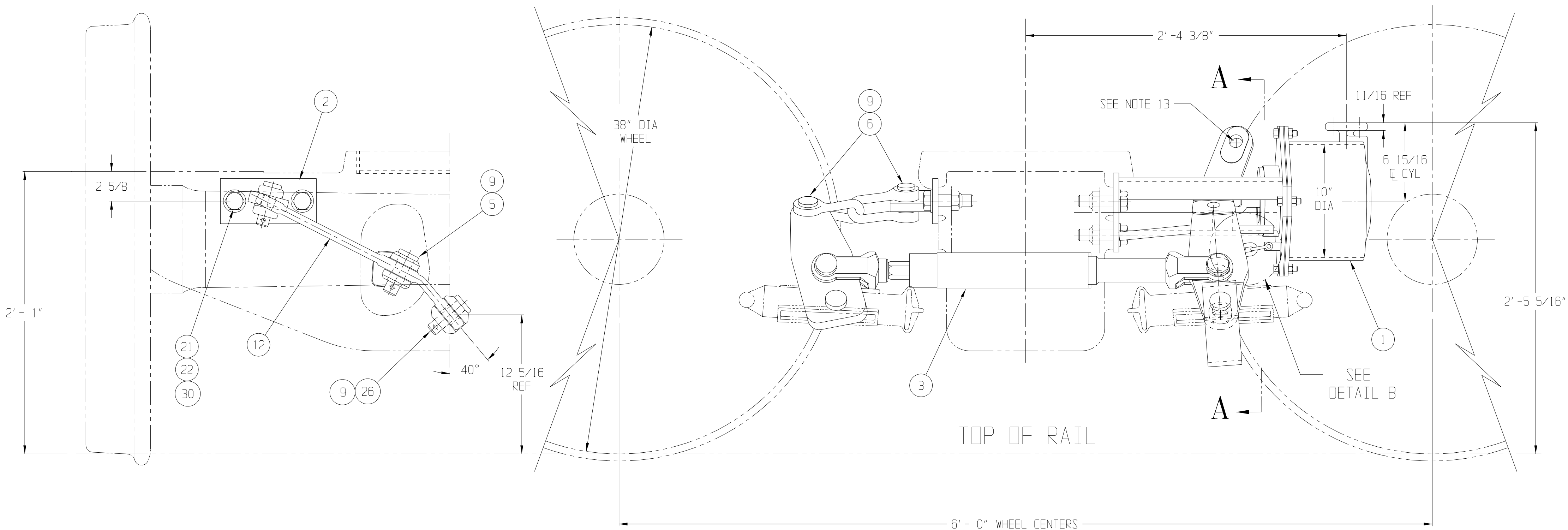
NOTE: AIR BRAKE FORCES ARE CALCULATED AT 65 PSI.



SECTION A-A



DETAIL B
SCALE: 3" = 1" - 0"



TOP OF RAIL

6' - 0" WHEEL CENTERS

COVERED BY PATENTS
U.S. 4312428
CANADA 1163931

REVISIONS			
LTR	DATE	DESCRIPTION	BY
C	2-15-96	REDRAWN ON CAD. 18 9/16 WAS 20 5/8 AT J15. IT 12. 9578-3424 WAS 9547-3424. IT 29 WAS 1 RED'D. 2'-5 5/16" WAS 2'-5 3/8" AT CS. 11 1/16" WAS 3/4. 6 15/16 WAS 7 AT DB. 2'-3 1/2" WAS 2'-4 1/2" AT G13. 2'-4" WAS 2'-3 3/4" AT EB. REVISED NOTES. PER ECR 98-74	PL
D	12-10-96	ITEM 3 3/4 WAS 3 1/2 IN B.M. (ITEM 21). P/N 33158 WAS 30847. REVISED TOP VIEW TO REFLECT THE CHANGE. PER ECR # 781	RES
E	9/30/99	DIRY 18 1/2 WAS 18 @ L-9. 2'-4 3/8" WAS 2'-4 @ E-8. 17 3/16 WAS 18 1/8. CHANGED PICTURE OF ITEM 1. ADDED NOTE 14. @ 50 PSI AND "SEE NOTE 14" @ K14 BRAKE FORCES WERE CALCULATED @ 50 PSI. ADDED ITEM 30, 31. ITEM 9 WAS QTY OF 7. CHANGED ITEM 9 WITH ITEM 31 IN TWO PLACES. "125 TON ASSEMBLY" WAS "125 TON APPLICATION". PER ECR # 2260	PS
F	09/27/06	IT 9 (P/N 4034-18) WAS 9008-2 AND IT 31 (P/N 4034-13) WAS 9008-3. PER ECR # 7230	PS
G	10/16/06	DELETED ITEM 31 (P/N 4034-13). ITEM 9 WAS 5 RED'D. PER ECR # 7279	PS
H	08/08/07	ADDED DIM TO LIVE LEVER LOCATION AT 3" & 5" PISTON TRAVEL (TOP VIEW). PER ECR # 7942	PS

- NOTE:
- SEE PURCHASE ORDER FOR DRAWING NO. SHOWING TRUCK MOUNTED BRAKE AND LEVER LOCATIONS.
 - QUANTITIES SHOWN ARE FOR ONE TRUCK SET OF MATERIAL.
 - THIS TRUCK MOUNTED BRAKE IS DESIGNED FOR USE WITH NO. 24 BRAKE BEAMS. WHEN USING ANY OTHER BRAKE BEAMS CONTACT ELLCON NATIONAL.
 - BADGE PLATES WILL BE SUPPLIED BY CARBUILDER.
 - THESE PARTS TO BE SHIPPED AS AN ASSEMBLY P/N 31550.
 - TRUCK MOUNTED BRAKE IS SHOWN IN LIGHT CAR, BRAKE RELEASED, AT HAND BRAKE TRUCK WITH LIVE LEVER NO. 9548-1524
 - DO NOT LIFT USING ANY PART OF THE TRUCK MOUNTED BRAKE.
 - TORQUE NUTS (ITEM 22) TO 250-300 FT. LBS.
 - FOR AIR BRAKE CONNECTION THE CARBUILDER WILL USE (2) 1/2-13 UNC HEX HEAD SELF LOCKING CAP SCREWS.
 - THERE SHOULD BE SLACK ALLOWED IN HORIZONTAL CHAIN CONNECTION FOR A CAR TO NEGOTIATE A 180 FT. OR 150 FT. RADIUS CURVE AS PER A.A.R. SPECIFICATION.
 - THE (2) PISTON TRAVEL INDICATOR DECALS ITEM 29 (P/N 32804) HAVE TO BE APPLIED BY THE CAR BUILDER TO EACH SIDE OF THE CAR IN THE CYLINDER AREA. THE DECALS ARE SHIPPED LOOSE.
 - UNLESS OTHERWISE NOTED, ALL DIMENSIONS ARE NOMINAL.
 - CLEVIS, CLEVIS PIN AND COTTER PIN FOR HAND BRAKE CONNECTION WILL BE SUPPLIED BY THE CAR BUILDER.
 - SEE ELLCON NATIONALS INSTALLATION AND FIELD SERVICE INSTRUCTIONS FOR SET-UP PROCEDURE.

SEE NOTE 11

SEE NOTE 5

SEE NOTE 1

5	3958-48	WASHER, PLAIN HARDENED, 1"	30
2	32804	PISTON TRAVEL INDICATOR DECAL (NOT SHOWN)	29
1	31411	CLEVIS (90 R.H. TWIST)	28
1	8819	CLEVIS	27
1	30538-1	CLEVIS PIN 1 11/32" Ø x 3 TO C HOLE	26
1	30218	PUSH ROD (PART OF ITEM 1)	25
1	30252	NAMEPLATE	24
1	4493-35	NUT (ESNA), 1/2-13 (PART OF ITEM 3)	23
5	4493-31	NUT (ESNA), 1-8	22
5	3442-137	BOLT 1-8 UNC X 3 3/4 LG. (GR. 5)	21
1	33158	CONTROL ARM NUT 1/2-13 (PART OF ITEM 3)	20
1	3958-45	WASHER, 1/2 (PART OF ITEM 3)	19
1	31439	CHAIN ASS'Y	18
2	31438-3	COTTER PIN	17
2	31438-2	PIN } ASSY P/N 31438	16
2	31438-1	SHACKLE	15
1	30835-1	ACTUATOR LEVER	14
A/R	9547-3524	LIVE LEVER (NON HAND BRAKE TRUCK)	13
A/R	9578-3424	DEAD LEVER	12
A/R	9548-1524	LIVE LEVER (HAND BRAKE TRUCK)	11
1	3958-35	WASHER, PLAIN, 1 3/8	10
7	4034-18	COTTER PIN, 3/8 DIA x 2 1/2 LG	9
1	30538-2	CLEVIS PIN, 1 11/32" Ø x 5 3/8 TO C HOLE	8
1	30166-2	CLEVIS PIN, 1 3/32" Ø x 2 1/2 TO C HOLE	7
2	30166-1	CLEVIS PIN, 1 3/32" Ø x 3 TO C HOLE	6
2	30167-1	CLEVIS PIN, 1 7/32" Ø x 3 TO C HOLE	5
1	30836	CONTROL ARM, 1/2-13 (PART OF ITEM 3)	4
1	7100-22	SLACK ADJUSTER (DOUBLE ACTING)	3
1	30985	DEAD LEVER BRACKET	2
1	31330-1	BOLSTER SADDLE AND CYLINDER ASS'Y	1
QTY.	PART NO.	DESCRIPTION	ITEM

TOLERANCES AND FINISHES UNLESS OTHERWISE NOTED

DECIMALS .xx
DECIMALS .xxx
ANGLES ±
FRACTIONS ±

DRILLED HOLE DIAMETERS
BREAK ALL SHARP CORNERS AND EDGES
C/SK ALL TAPPED HOLES 118" x ONE THREAD DEEP
MACHINED SURFACES 125/

ELLCON NATIONAL
50 BEECHTREE BLVD. GREENVILLE, S.C. 29605

125 TON ASSEMBLY
MODEL 8500
TRUCK MOUNTED BRAKE

SCALE 2" = 1" - 0" DATE 10-8-91 REV. _____

DRAWN WH
CHECKED DMS

TMB-293-L H

MATERIAL: WEIGHT: 239 LBS PER TMB WITH HANDBRAKE LEVER (LESS BRAKE BEAMS, SHOES, KEYS AND CYLINDER HOSE)

THIS DOCUMENT AND ITS CONTENTS CONTAIN CONFIDENTIAL AND PROPRIETARY INFORMATION OWNED BY ELLCON-NATIONAL, INC. AND IT AND ALL COPIES THEREOF ARE TO BE RETURNED TO ELLCON-NATIONAL WHEN SO REQUESTED. THIS DOCUMENT OR ANY PART THEREOF SHALL NOT BE REPRODUCED, COPIED, OR TRANSMITTED ELECTRONICALLY. THE INFORMATION CONTAINED HEREIN SHALL NOT BE DISCLOSED BY THE RECIPIENT TO OTHERS OR USED BY RECIPIENT WITHOUT THE PRIOR WRITTEN CONSENT SPECIFIC TO EACH CASE. ELLCON-NATIONAL, INC.