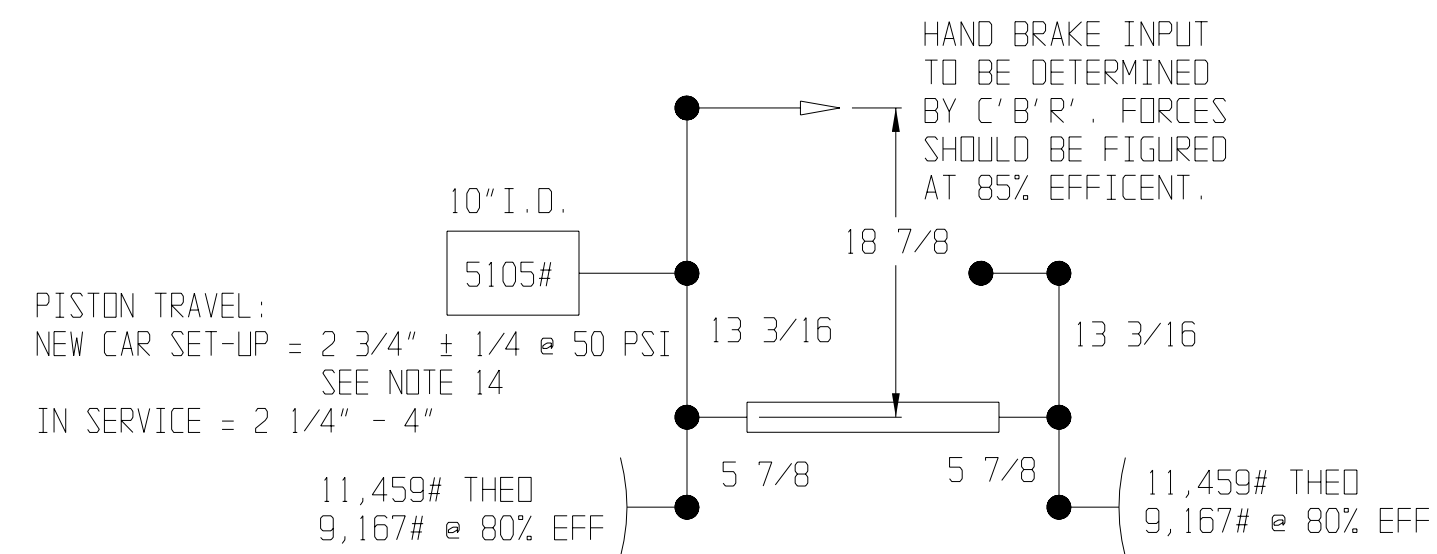
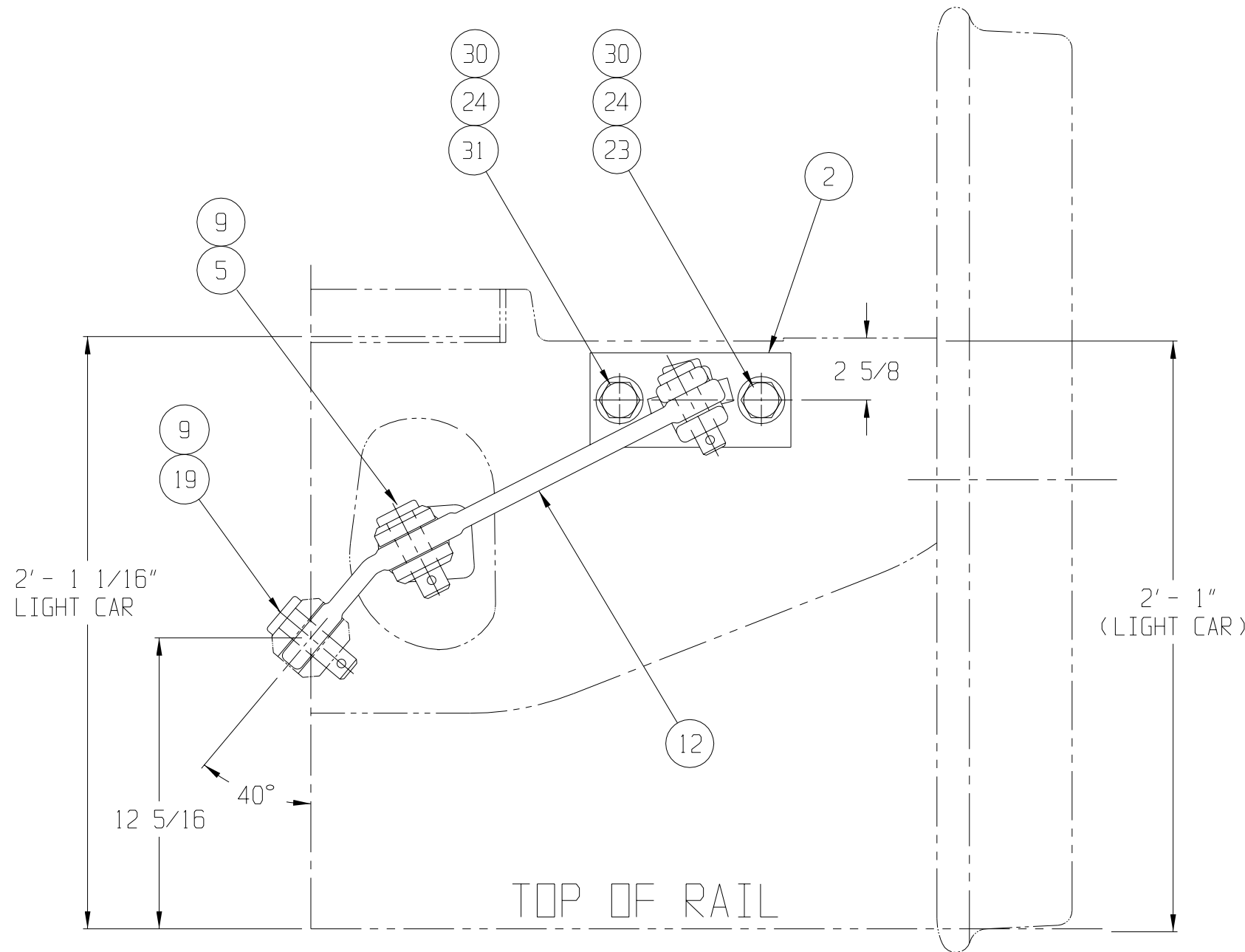


COVERED BY PATENTS
U.S. 4312428
CANADA-1163931

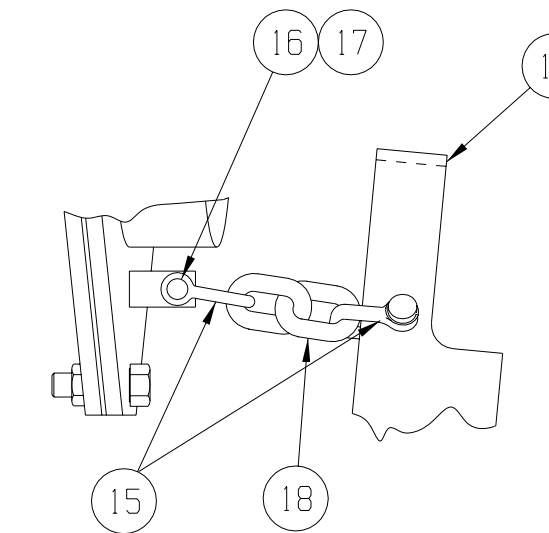
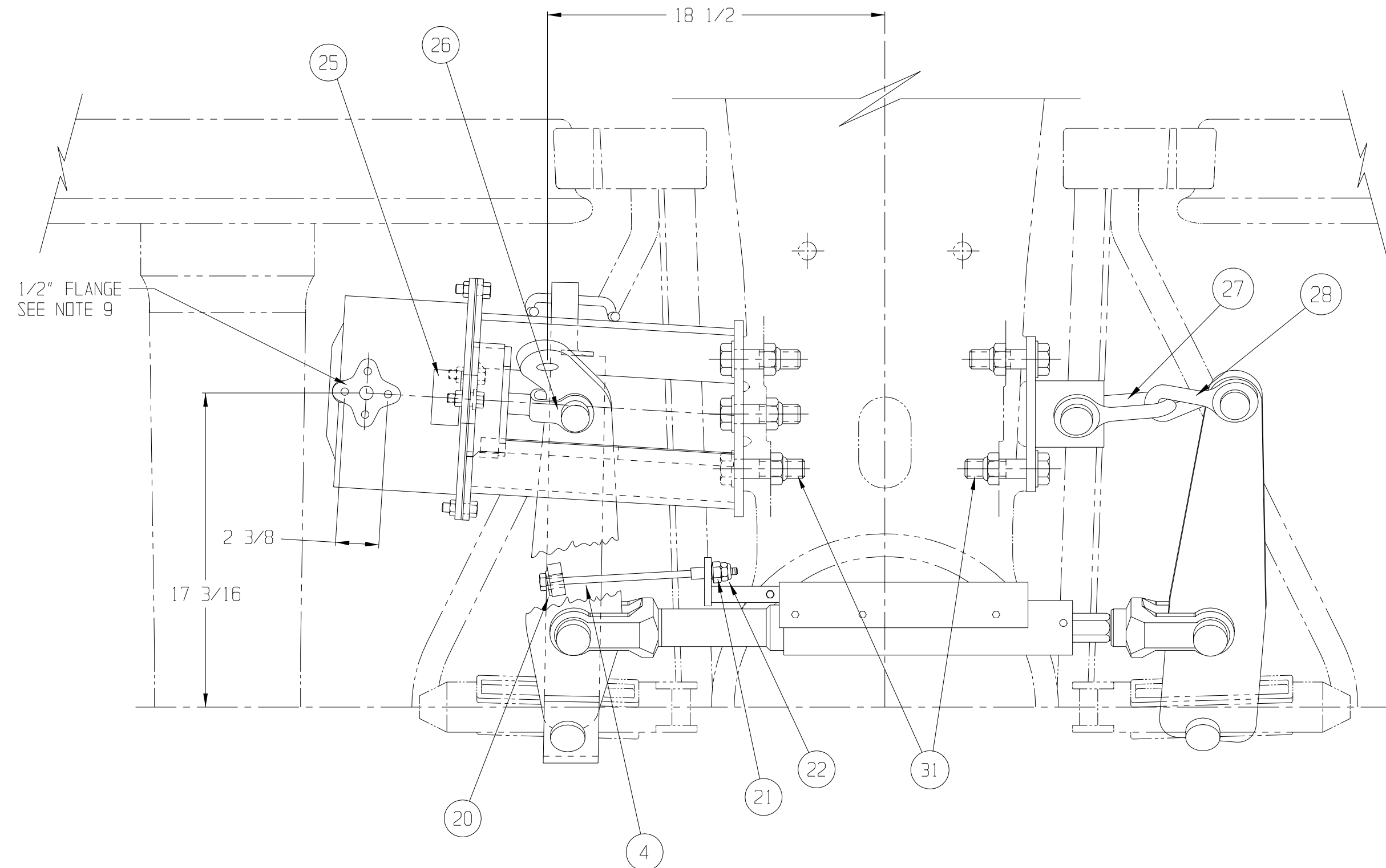
REVISIONS			
LTR	DATE	DESCRIPTION	BY
P	12-21-98	DIM 18 1/2 WAS 18 @ K-10. 2' - 4 3/8" WAS 2' - 3 7/8" @ E-10. CHANGE PICTURE OF ITEM 1 ADDED NOTE 14. * @ 50 PSI * SEE NOTE 14 @ K-16. BRAKE FORCES WERE CALCULATED @ 50 PSI. ADDED ITEM 31. ITEM 9 WAS QTY OF 7. CHANGED ITEM 9 WITH ITEM 31 IN TWO PLACES ECN #1753 DRAWING TITLE WAS "125 TON APPLICATION...".	AKH
D	10/5/99	ITEM 24 WAS 22 IN NOTE #8. PER ECN #2272	PPS
R	7/28/00	ADDED ITEM 32. ITEM 23 P/N 3442-137 WAS 5 REG'D. PER ECN #2883	PPS
S	4-16-01	IN NOTE 6. P/N 9548-2524 WAS 9548-2524. IN NOTE 11 ITEM 28 WAS ITEM 30. REVISED NOTE 5. PER ECN # 3464	KLS
T	09/25/06	IT 9 (P/N 4034-18) WAS 9008-2 AND IT 31 (P/N 4034-13) WAS 9008-3. PER ECN #7230	PS
U	10/13/06	DELETED ITEM 31 (P/N 4034-13). ITEM 9 WAS 5 REG'D. IT 31 WAS IT 32. PER ECN #7279	PS



NOTE: AIR BRAKE FORCES ARE CALCULATED AT 65 PSI.



VIEW B



DETAIL-C
SCALE: 3" = 1' - 0"

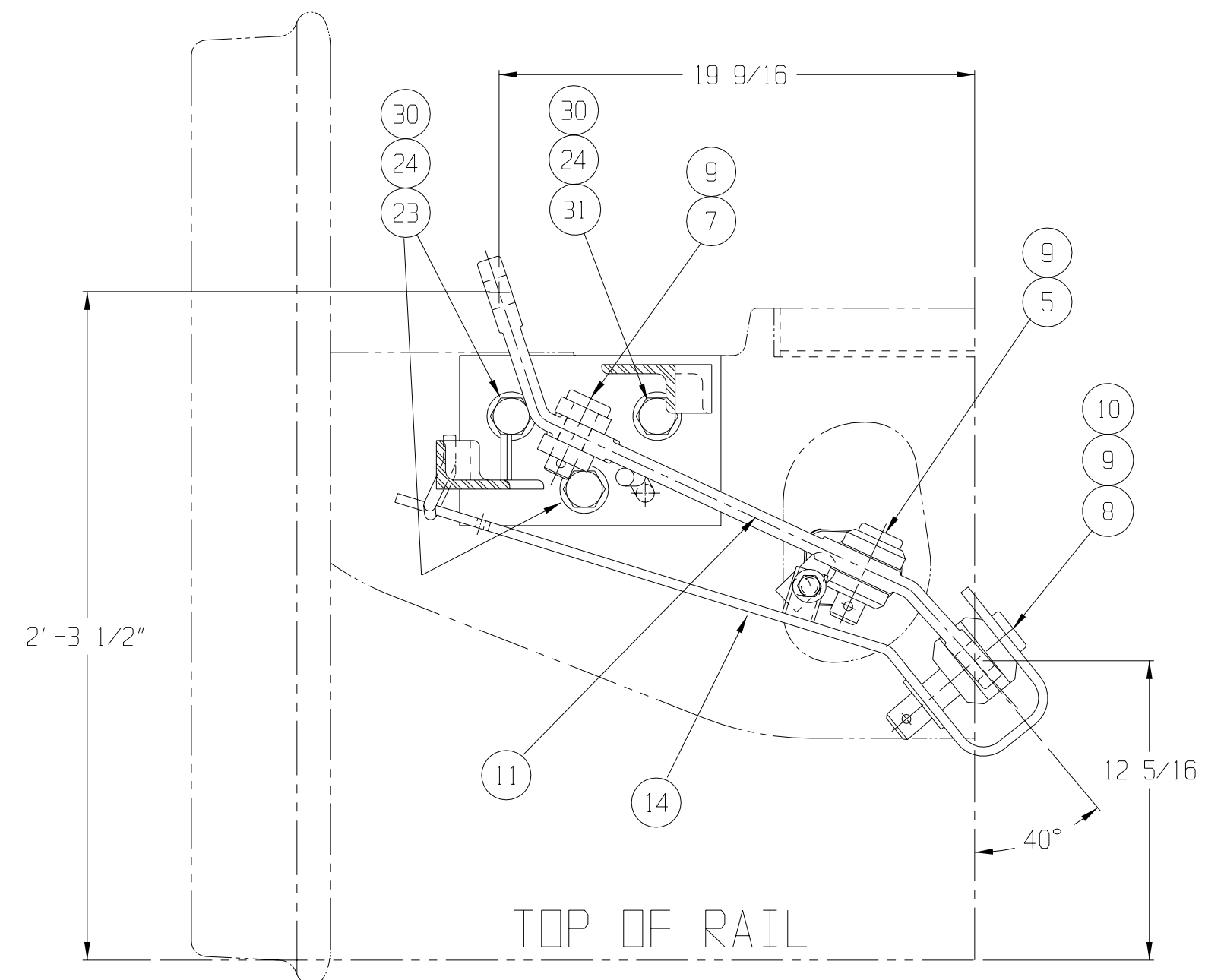
- NOTE:
- SEE PURCHASE ORDER FOR DRAWING NO. SHOWING TRUCK MOUNTED BRAKE AND LEVER LOCATIONS.
 - QUANTITIES SHOWN ARE FOR TRUCK SET OF MATERIAL.
 - THIS TRUCK MOUNTED BRAKE IS DESIGNED FOR USE WITH NO. 24 BRAKE BEAMS. WHEN USING ANY OTHER BRAKE BEAMS CONTACT ELLCON NATIONAL.
 - BADGE PLATES WILL BE SUPPLIED BY CARBUILDER.
 - THESE PARTS MAKE ASSEMBLY P/N 31550.
 - TRUCK MOUNTED BRAKE IS SHOWN IN LIGHT CAR, BRAKE RELEASED, AT HAND BRAKE TRUCK WITH LIVE LEVER NO. 9548-2524.
 - DO NOT LIFT USING ANY PART OF THE TRUCK MOUNTED BRAKE.
 - TORQUE NUTS (ITEM 24) TO 250-300 FT. LBS.
 - FOR AIR BRAKE CONNECTION THE CARBUILDER WILL USE (2) 1/2-13 UNC HEX HEAD SELF LOCKING CAP SCREWS.
 - THERE SHOULD BE SLACK ALLOWED IN HORIZONTAL CHAIN CONNECTION FOR A CAR TO NEGOTIATE A 180 FT. OR 150 FT. RADIUS CURVE FOR A.A.R. SPECIFICATION.
 - THE (2) PISTON TRAVEL INDICATOR DECALS ITEM 29 (P/N 32804) HAVE TO BE APPLIED BY THE CAR BUILDER TO EACH SIDE OF THE CAR IN THE CYLINDER AREA. THE DECALS ARE SHIPPED LOOSE.
 - UNLESS OTHERWISE NOTED, ALL DIMENSIONS ARE NOMINAL.
 - CLEVIS, CLEVIS PIN AND COTTER PIN FOR HAND BRAKE CONNECTION WILL BE SUPPLIED BY THE CAR BUILDER.
 - SEE ELLCON NATIONALS INSTALLATION AND FIELD SERVICE INSTRUCTIONS FOR SET-UP PROCEDURE.

SEE NOTE 11

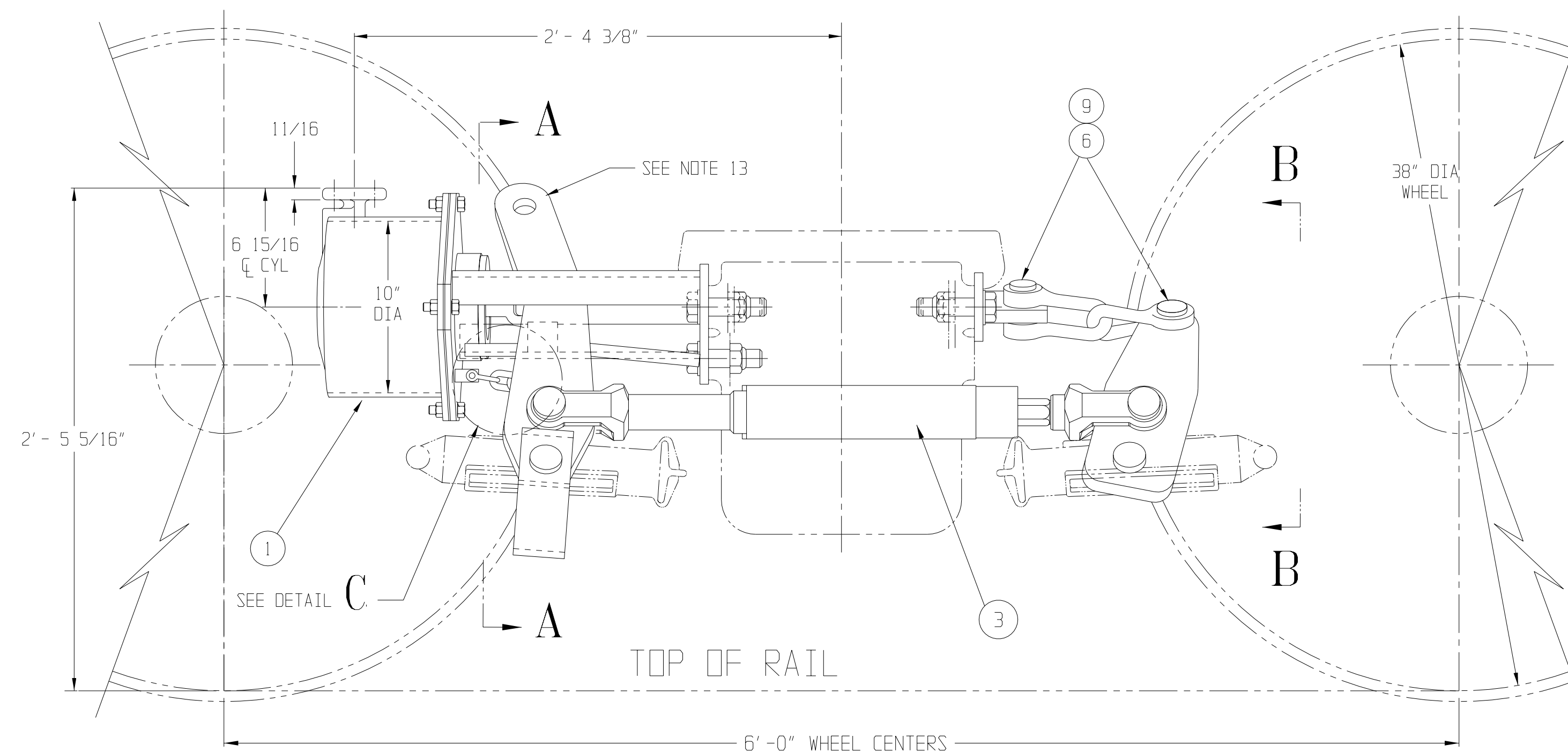
SEE NOTE 5

SEE NOTE 1

2	3442-190	BOLT 1-8 UNC X 4.0 LG. (GR.5) "GREEN"	31
5	3958-48	WASHER, PLAIN HARDENED 1"	30
2	32804	P.T INDICATOR DECAL	29
1	31411	CLEVIS (90 R.H. TWIST)	28
1	8819	CLEVIS	27
1	30218	PUSH ROD (PART OF ITEM 1)	26
1	30252	NAMEPLATE (PART OF ITEM 1)	25
5	4493-31	NUT (ESNA), 1-8	24
3	3442-137	BOLT 1-8 UNC X 3 3/4 LG. (GR.5)	23
1	4493-35	NUT (ESNA), 1/2-13 (PART OF ITEM 3)	22
1	33158	CONTROL ARM NUT (PART OF ITEM 3)	21
1	3958-45	WASHER, PLAIN 1/2 (PART OF ITEM 3)	20
1	30538-1	CLEVIS PIN 1 11/32 X 3 TO C HOLE	19
1	31439	CHAIN ASSY	18
2	31438-3	COTTER PIN	17
2	31438-2	PIN	ASS'Y P/N 31438
2	31438-1	SHACKLE	
1	30835-2	ACTUATOR LEVER	14
A/R	9547-4524	LIVE LEVER (NON HD. BRK. TRUCK)	13
A/R	9578-4424	DEAD LEVER	12
A/R	9548-2524	LIVE LEVER (HAND BRAKE TRUCK)	11
1	3958-35	WASHER, PLAIN, 1 3/8	10
7	4034-18	COTTER PIN, 3/8 DIA X 2 1/2 LG	9
1	30538-2	CLEVIS PIN, 1 11/32 X 5 3/8 TO C HOLE	8
1	30166-2	CLEVIS PIN, 1 3/32 X 2 1/2 TO C HOLE	7
2	30166-1	CLEVIS PIN, 1 3/32 X 3 TO C HOLE	6
2	30167-1	CLEVIS PIN, 1 7/32 X 3 TO C HOLE	5
1	30836	CONTROL ARM 1/2-13 (PART OF ITEM 3)	4
1	7100-22R	SLACK ADJUSTER (DOUBLE ACTING)	3
1	30985-2	DEAD LEVER BRACKET	2
1	31330-2	BOLSTER SADDLE AND CYLINDER ASS'Y	1
QTY.	PART NO.	DESCRIPTION	ITEM



SECTION A-A



THIS DOCUMENT AND ITS CONTENTS CONTAIN CONFIDENTIAL AND PROPRIETARY INFORMATION OWNED BY ELLCON-NATIONAL, INC. AND IT AND ALL COPIES THEREOF ARE TO BE RETURNED TO ELLCON-NATIONAL WHEN SO REQUESTED. THIS DOCUMENT OR ANY PART THEREOF SHALL NOT BE REPRODUCED, COPIED, OR TRANSMITTED ELECTRONICALLY. THE INFORMATION CONTAINED HEREIN SHALL NOT BE DISCLOSED BY THE RECIPIENT TO OTHERS OR USED BY RECIPIENT WITHOUT THE PRIOR WRITTEN CONSENT SPECIFIC TO EACH CASE. ELLCON-NATIONAL, INC.

MATERIAL:
WEIGHT: 239 LBS PER TMB
WITH HANDBRAKE LEVER
(LESS BRAKE BEAMS, SHOES,
KEYS AND CYLINDER HOSE)

BILL OF MATERIAL		
125 TON ASSEMBLY MODEL 8500 TRUCK MOUNTED BRAKE		
SCALE 2" = 1' - 0"	DATE 12-15-88	REV.
DRAWN	DT	TMB-268-R U
CHECKED	DMS	