

REVISIONS			
REV	DATE	DESCRIPTION	ECN BY
G	04-04-2008	REDRAWN, ADDED 34562	8260 MMM

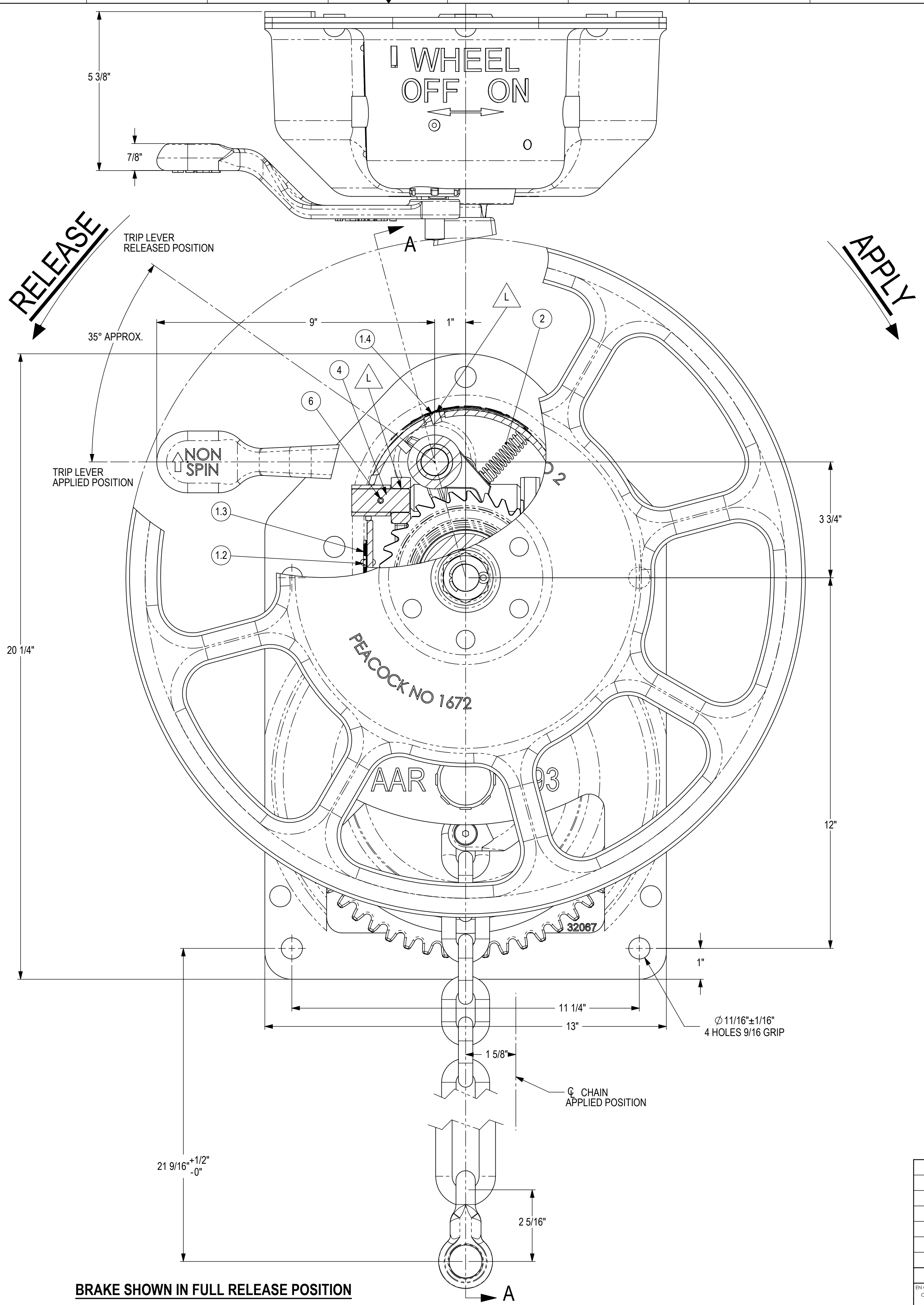
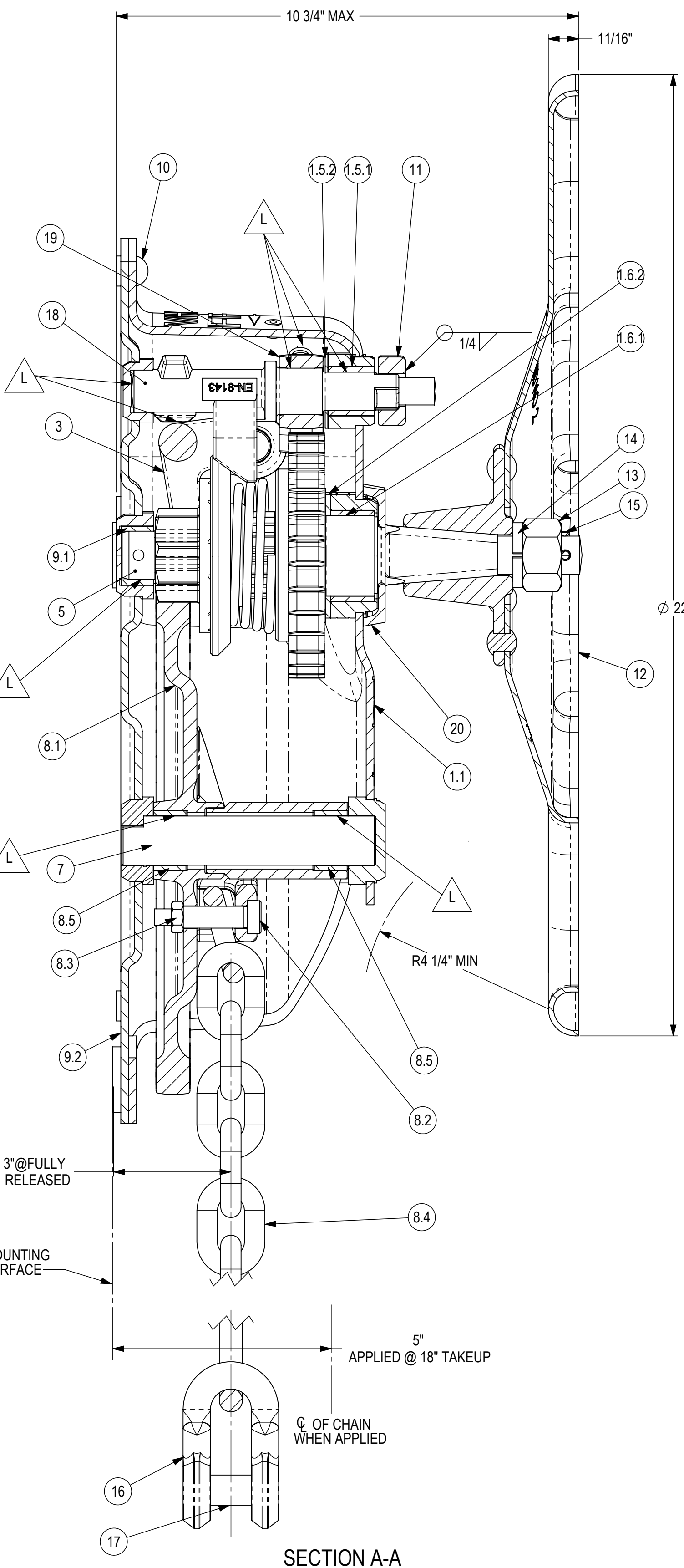
CONVENTIONAL HAND BRAKE

AAR FIELD MANUAL GROUP "N"
NON-SPIN VERTICAL WHEEL
GRADUAL & QUICK RELEASE

AAR APPROVED VERTICAL CHAIN TRAVEL THRU 18"
BRAKES FURNISHED COATED WITH BLACK PRIMER
APPROXIMATE WEIGHT 87 LBS

GENERAL DATA

- NOTES:
- WE RECOMMEND HAND BRAKE BE APPLIED TO CAR AFTER BLASTING. WHEN SUBJECTED TO BLASTING, HAND BRAKE MUST BE PROTECTED FROM SHOT OR GRIT MATERIAL. REF. AAR FREIGHT CAR DESIGN SPECIFICATION PARA. 5.2.2
 - BELL CRANK OR SHEAVE FURNISHED AS SPECIFIED. SEE DRAWING D-32243 FOR PROPER INSTALLATION.
 - SEE DRAWING DX-31000 FOR IDENTIFICATION OF PARTS
 - ALL DIMENSIONS ± 1/16 UNLESS OTHERWISE SPECIFIED.
 - LUBRICATION RESERVOIRS AND LUBRICATING POINTS INDICATED BY
 - WHEN APPLYING HAND WHEEL, TORQUE NUT TO 160 FT-LBS AND INSERT COTTER THRU SHAFT.



ITEM NO.	PART No.	DESCRIPTION	QTY.
20	34562	RUBBER DEFLECTOR	1
19	4092	HOLDING PAWL	1
18	9143	CAM SHAFT	1
17	240	RIVET	1
16	458	CLEVIS	1
15	4034-9	COTTER PIN	1
14	242	LOCK WASHER	1
13	241	NUT	1
12	1672	HAND WHEEL	1
11	32275	TRIP LEVER	1
10	454	RIVET	5
9.2	32067	BACK PLATE ASSEMBLY	1
9.1	32071	BEARING	1
9	32095	BACK PLATE ASSEMBLY	1
8.5	32071	BEARING	2
8.4	32096	CHAIN ASSEMBLY	1
8.3	3443-53	HEX NUT	1
8.2	5340-4	SHOULDER BOLT	1
8.1	32173	GEAR & CHAIN DRUM ASSEMBLY	1
8	32159	CHAIN DRUM ASSEMBLY	1
7	32069	GEAR SHAFT	1
6	1664	ROLL PIN	2
5	32082	PINION ASSEMBLY	1
4	9236	YOKE SHAFT	2
3	4622	YOKE ASSEMBLY	1
2	32075	PAWL SPRING	1
1.6.2	32074-3	BEARING WASHER	1
1.6.1	32074-4	BEARING	1
1.6	32074	PINION BEARING	1
1.5.2	32231-3	FRONT PAWL SHAFT THRUST BEARING	1
1.5.1	32231-4	FRONT PAWL SHAFT BEARING	1
1.5	32231	FRONT PAWL SHAFT BEARING	1
1.4	5892	OIL CUP	1
1.3	31818	WARNING LABEL	1
1.2	3338-1	RIVET	2
1.1	32068	PRESSED STEEL HOUSING	1
1	32083	HOUSING	1

BILL OF MATERIAL

INTERPRET DRAWING IN ACCORDANCE WITH ASME Y14.5 ALL DIMENSIONS ARE IN INCHES UNLESS NOTED TOLERANCES/FINISHES UNLESS OTHERWISE NOTED DECIMALS: .XX ± FRACTIONS: XXX ± ANGLES: ± DRILLED HOLE DIAMETERS: +0.01/-0.01 BREAK ALL SHARP CORNERS AND EDGES CHAMFER ALL TAPPED HOLES 1/8" X ONE THREAD DEEP MATERIAL: EST. WT. 87 LBS		<p>50 BEECHTREE BLVD. GREENVILLE, S.C. 29605</p>
<h2>CONVENTIONAL HAND BRAKE</h2> <h3>DESIGNATION 31000</h3>		
DRAWN: MMM CHECKED: RLC DATE: 4-28-92 SCALE: 1:2	REVISIONS: D 31000 G	