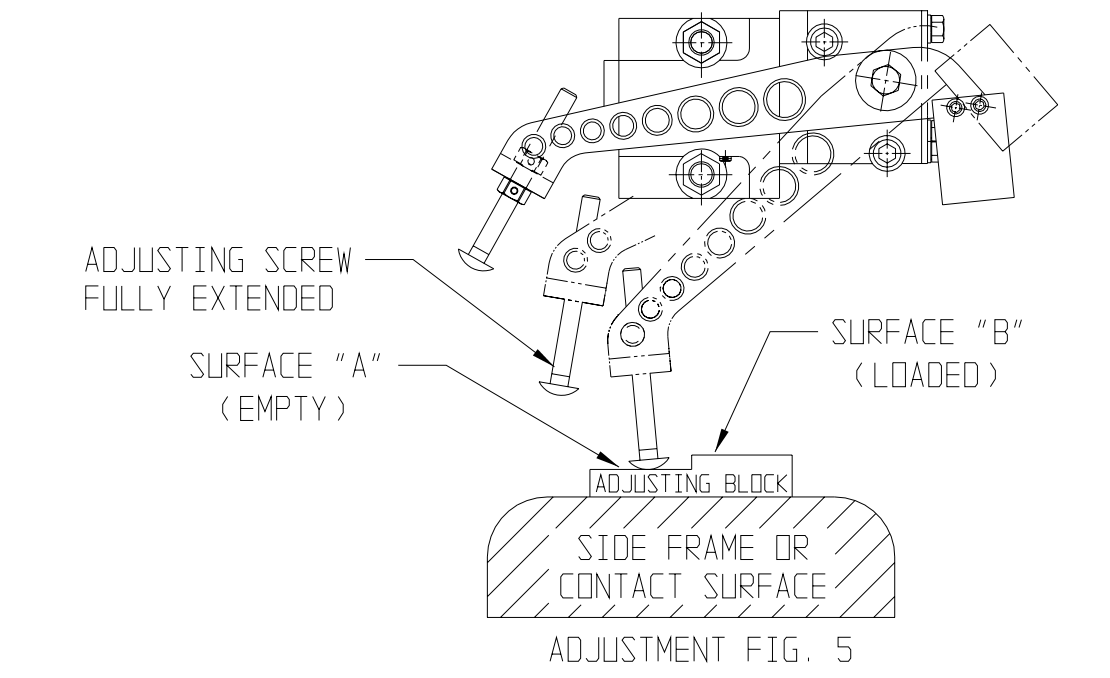
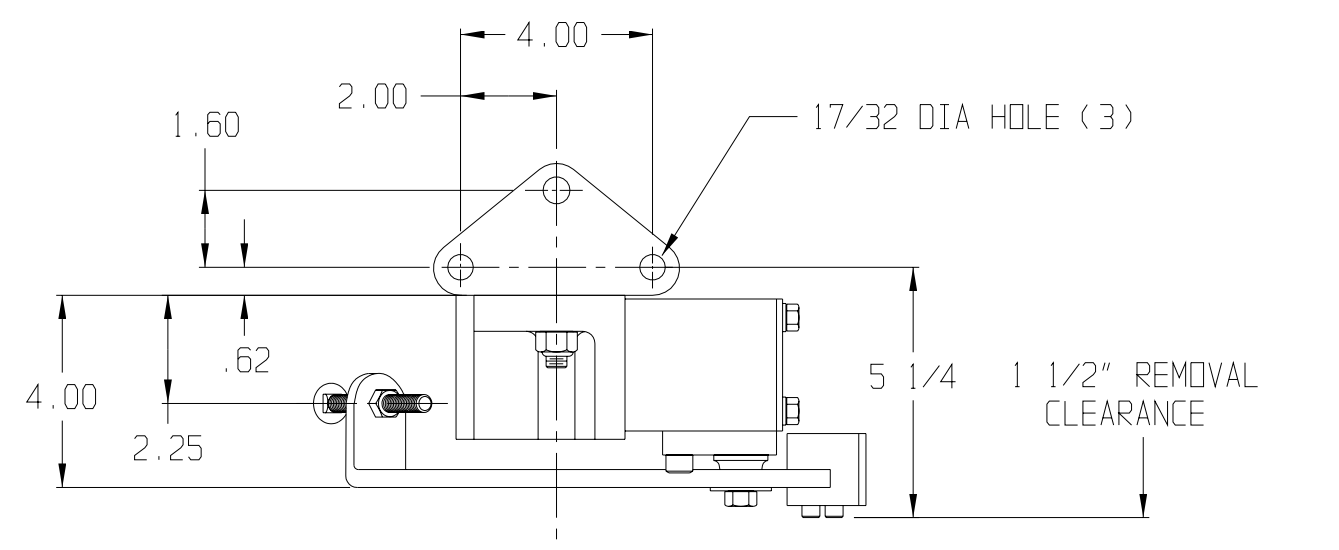
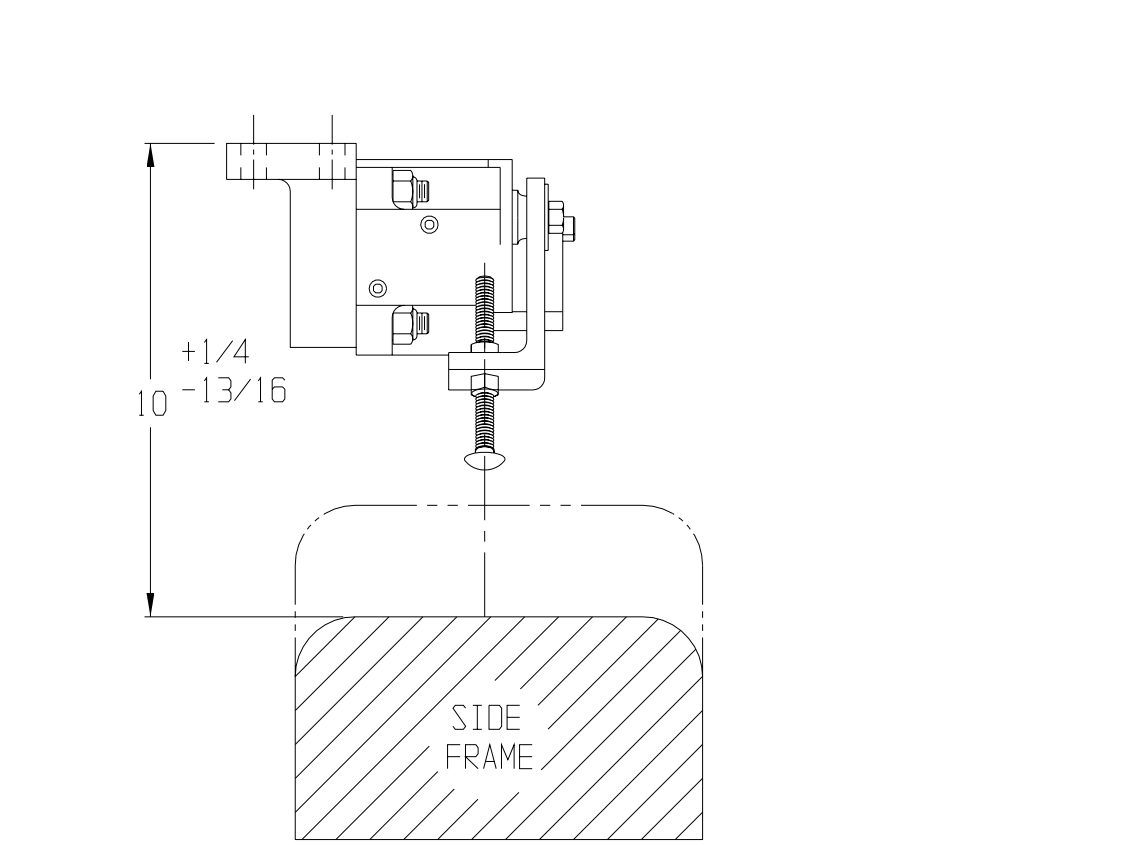
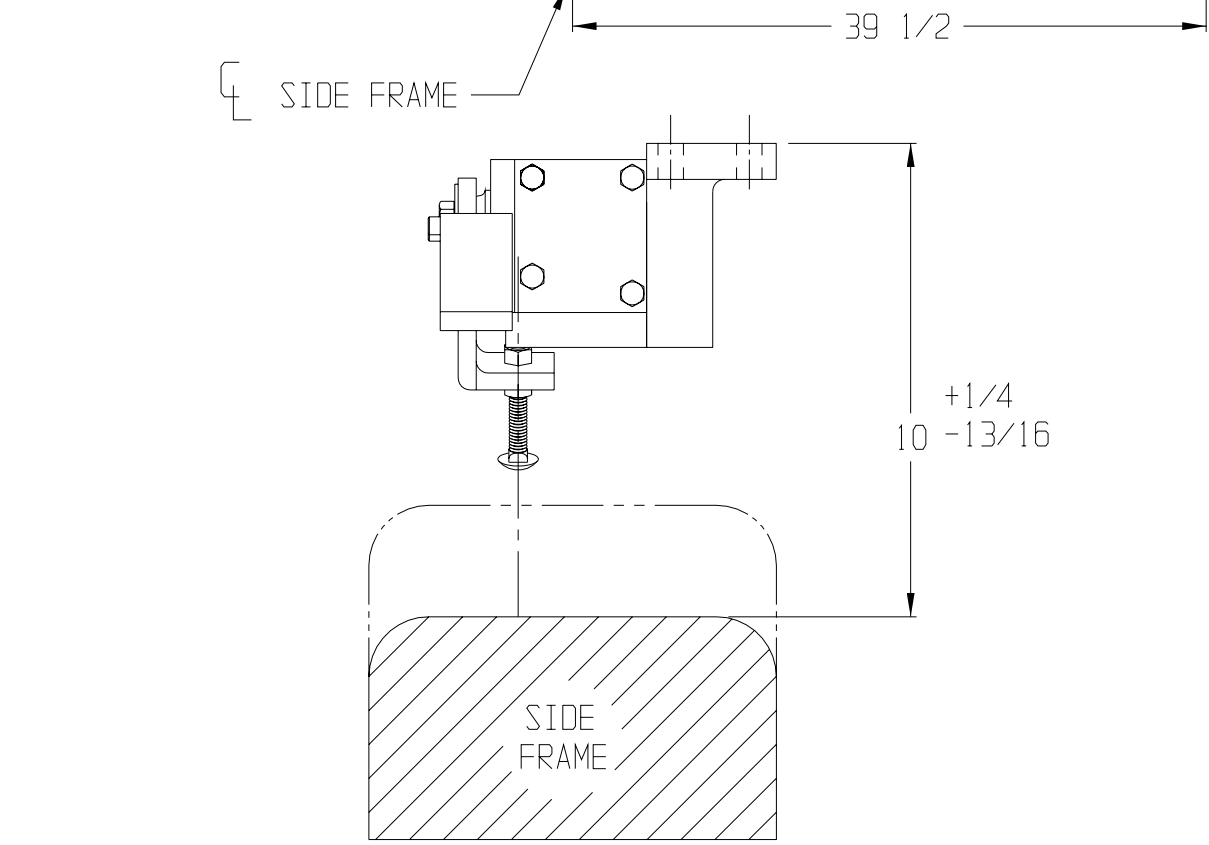
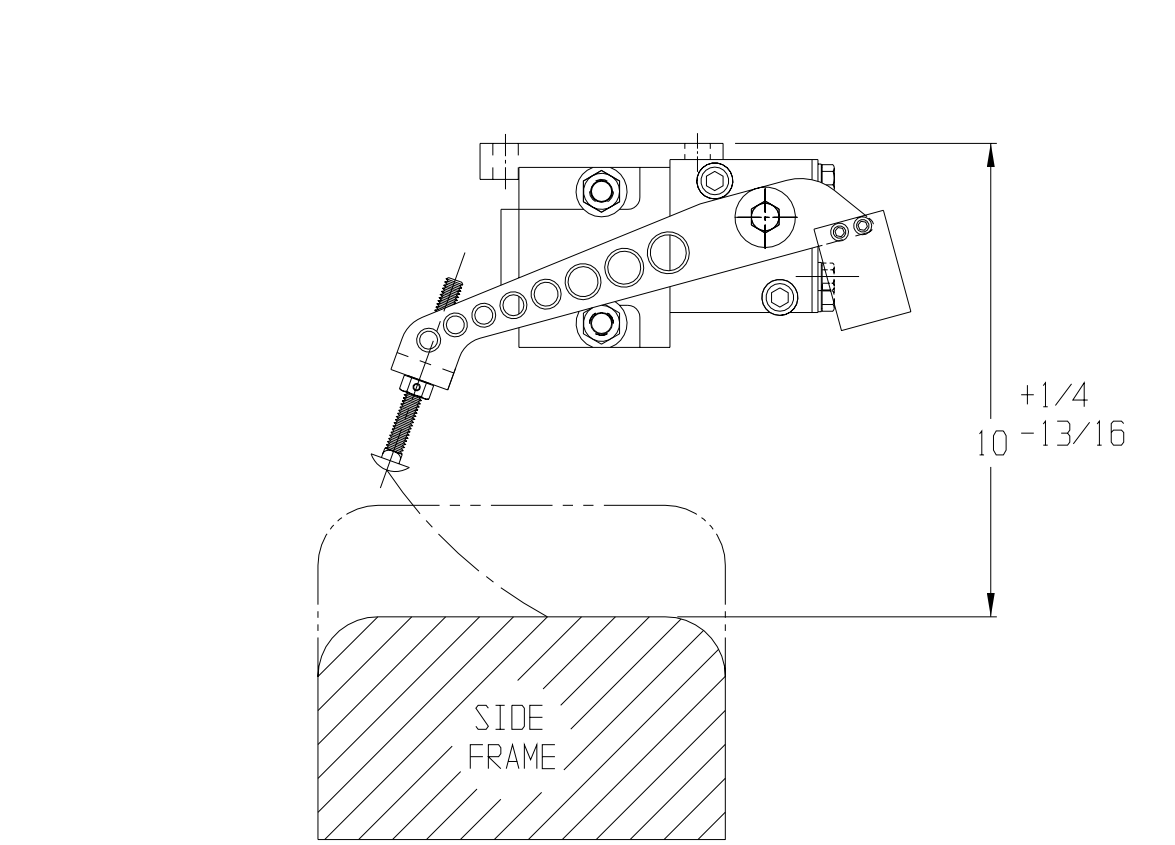
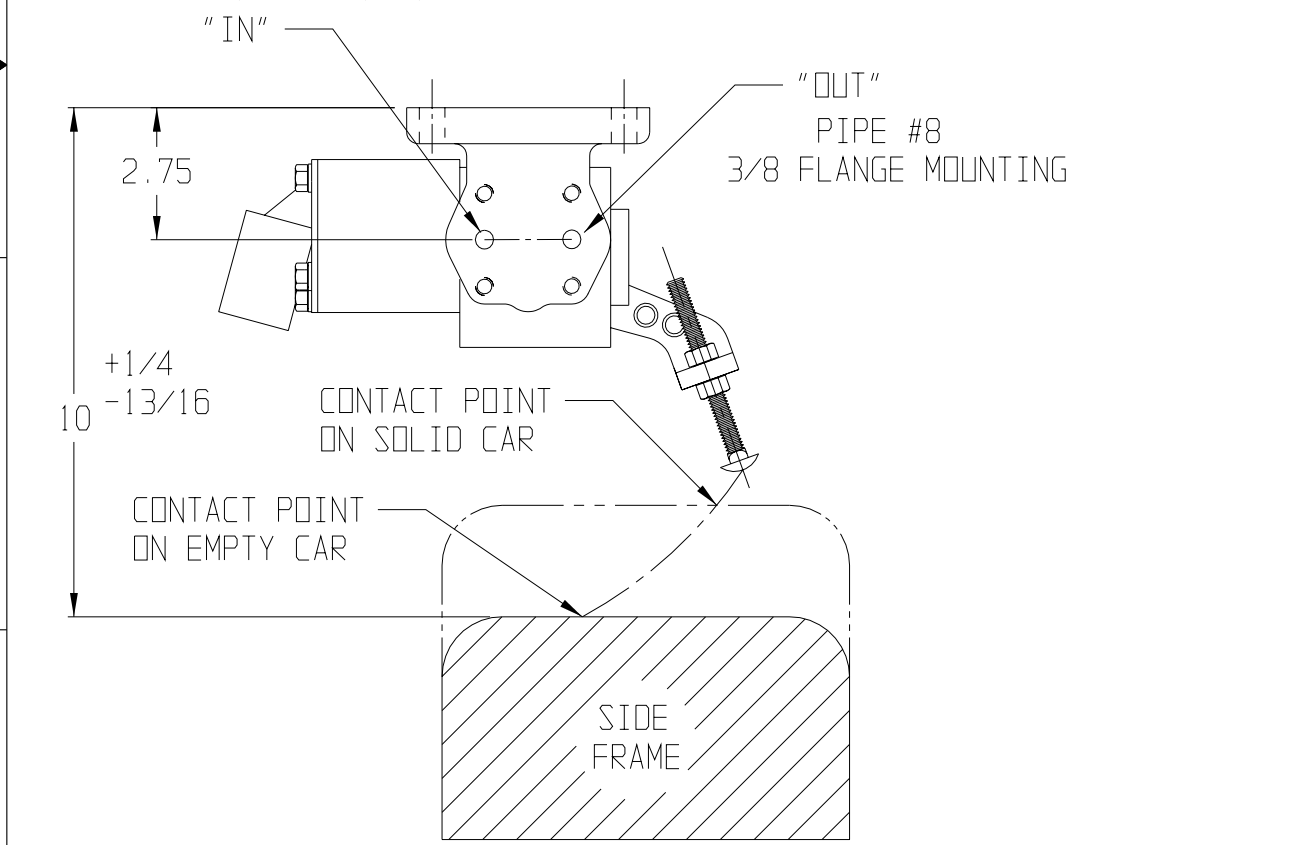
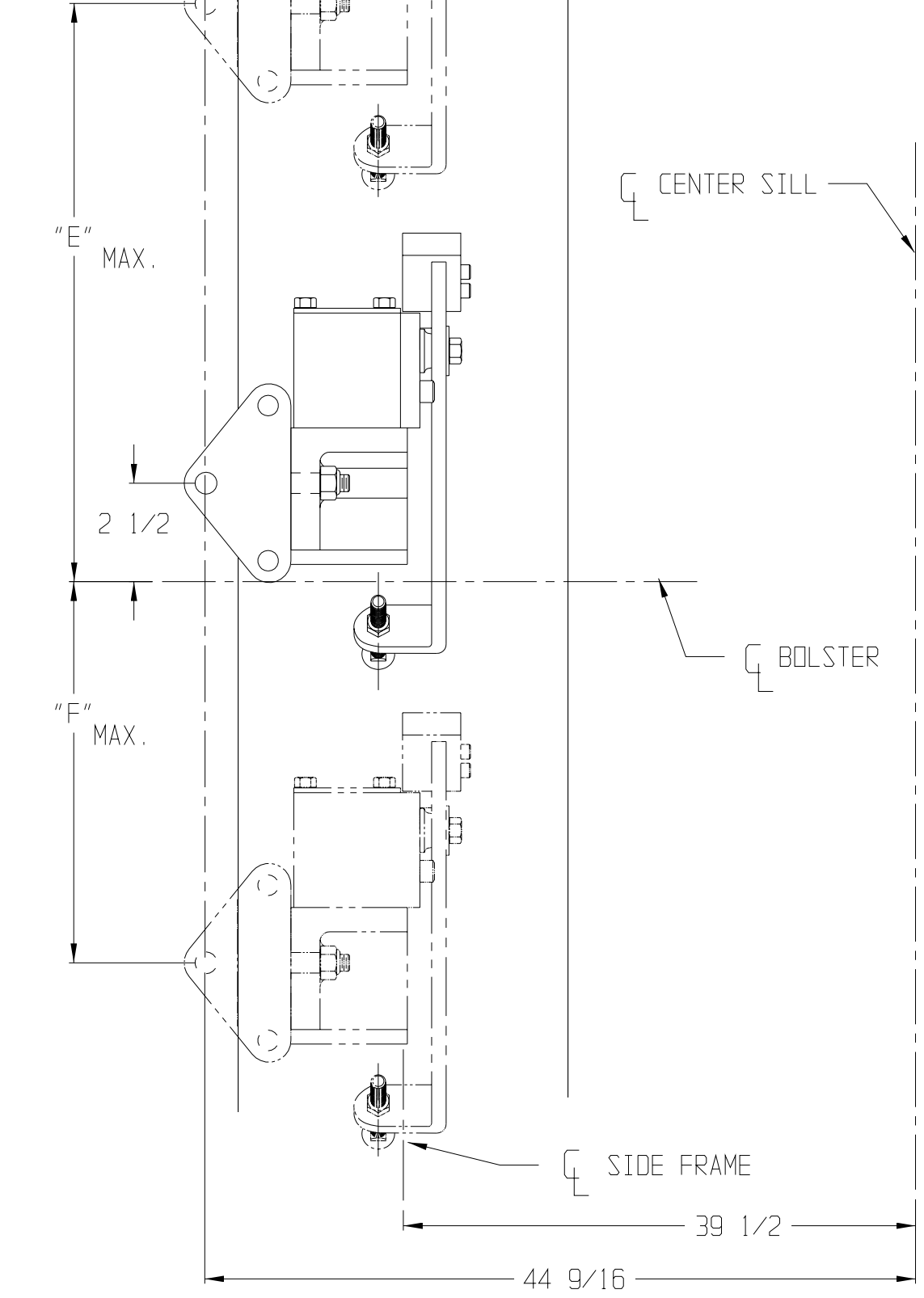
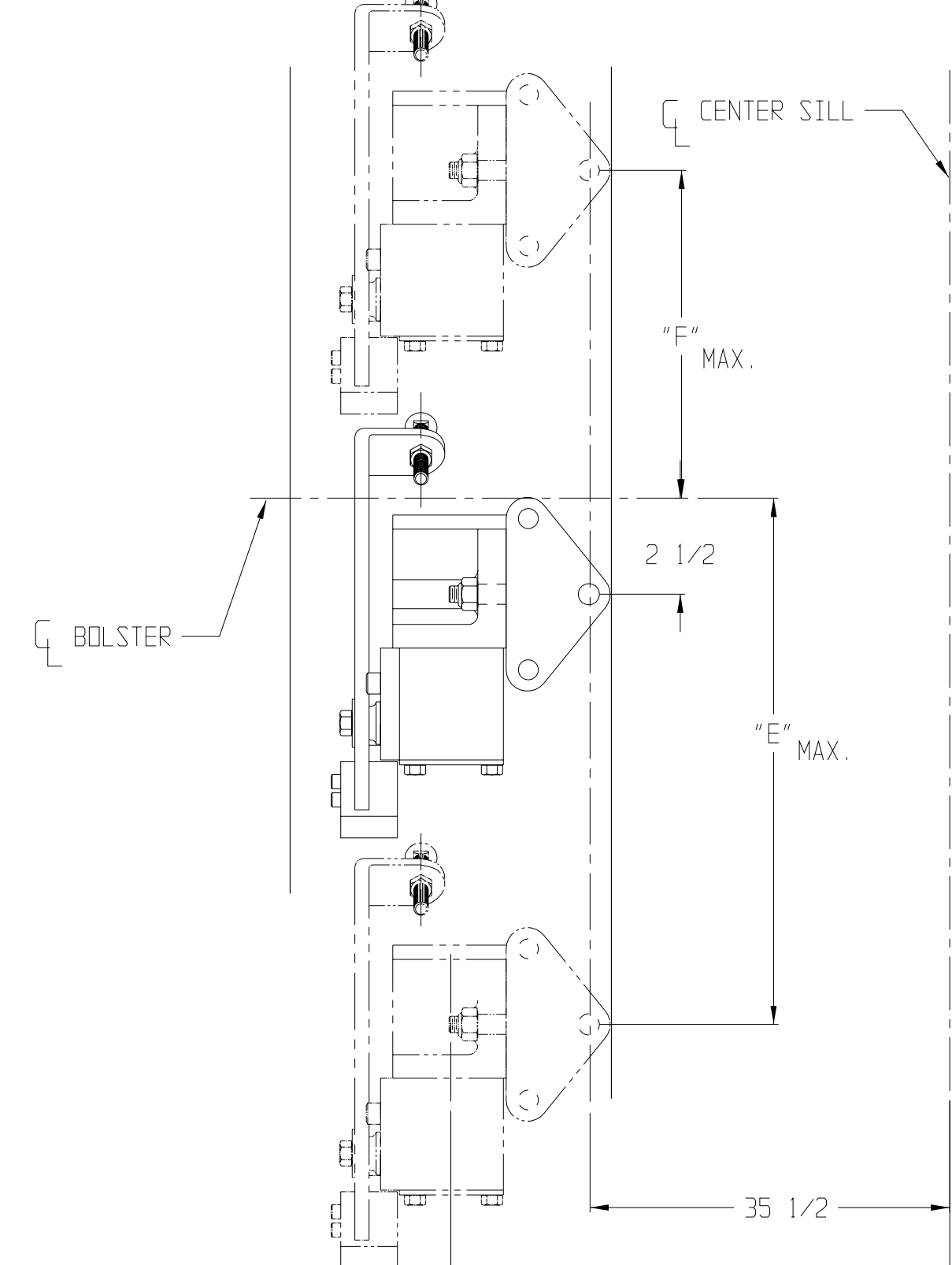
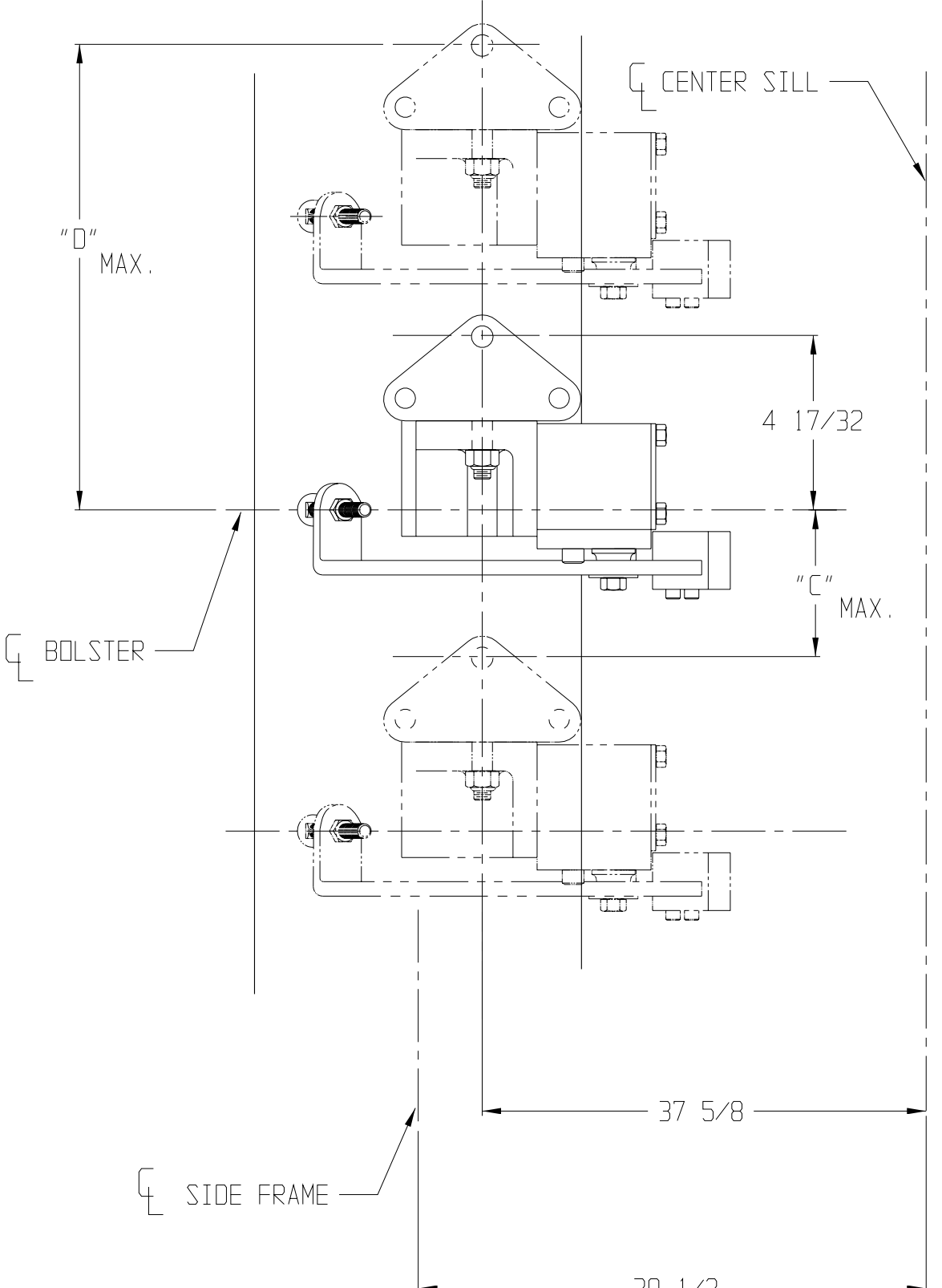
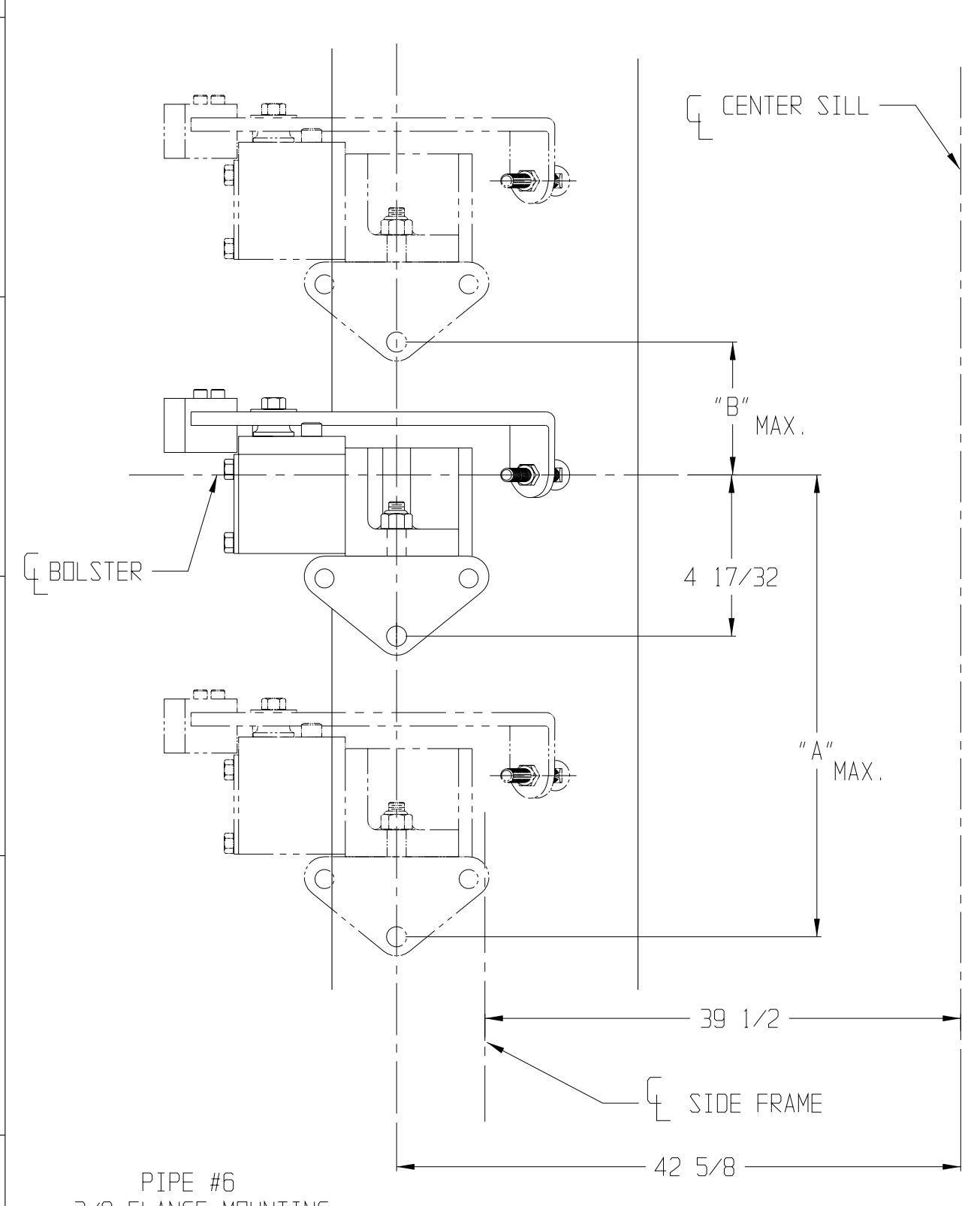


REVISIONS			
LTR	DATE	DESCRIPTION	BY
		RELEASED ON EDR 93-6	
A	10/13/98	9 3/4 +1/4 -1/2 MAX TO 11/4 (4 PLACES). ADDED VIEW SHOWING REF DIM.S FOR LAYOUTS PER ECN 1579	DAC
B	08/30/02	REPLACED PLASTIC CONTACT SCREW IN ALL VIEWS WITH CARRIAGE SCREW	DAC
C	10/24/03	CHANGED 9 3/4" MOUNTING HEIGHT TO 10" AND TOLERANCE 1/2" TO 13/16"	RJD
D	12/4/03	ADDED 5 1/4 DIM AND 1 1/2" REMOVAL CLEARANCE (AT E2). PER ECN #5352	SBS



- PROCEDURE**
1. PLACE ADJUSTMENT BLOCK ON SIDE FRAME OR CONTACT SURFACE DIRECTLY BELOW CONTACT ADJUSTING SCREW ADJUSTING SCREW SHOULD BE FULLY EXTENDED AS SHOWN.
 2. WITH BRAKES APPLIED (45 PSIG MIN. B.C. PRESSURE) ADJUST CONTACT ADJUSTING SCREW UNTIL INDICATOR IS SEEN PROTRUDING FROM PROPORTIONAL VALVE. CONTACT SCREW SHOULD BE TOUCHING SURFACE "A".
 3. RELEASE BRAKES AND SLIDE ADJUSTING BLOCK SO THAT CONTACT SCREW CONTACTS SURFACE "B". APPLY BRAKES, INDICATOR SHOULD NOT PROTRUDE FROM PROPORTIONAL VALVE.
 4. APPLY RED LOCTITE AND LOCK ADJUSTING SCREW.
 5. VALVE OPERATION MUST PASS A.A.R. SINGLE CAR CODE OF TESTS BEFORE THE CAR IS RELEASED FOR SERVICE.

OUTBOARD FLOOR MOUNTING FIG. 1

INBOARD FLOOR MOUNTING FIG. 2

LONGITUDINAL FLOOR MOUNTING FIG. 3

LONGITUDINAL FLOOR MOUNTING FIG. 4

NEW CAR INSTALLATION

1. SPRING TRAVEL BETWEEN LIGHT AND LOADED CAR 2 5/16 MAX. AND 1 7/8 MIN.
2. SELECT SENSOR VALVE MOUNTING TO SUIT CAR CONSTRUCTION AND PIPING. SEE FIGURES 1, 2, 3, AND 4.
3. HEIGHT:
THE MOUNTING HEIGHT SHOULD BE INCREASED FOR LUBRICATION PADS (1/8" RECOMMENDED) PLUS ALLOWANCE FOR NEW CAR SETTLING (1/4" MAX. RECOMMENDED)
4. IF VALVE IS SUBJECT TO DANGER FROM CAR BODY ROLL, A PROTECTIVE BLOCK MUST WELDED TO THE STRUCTURE. A DAMAGED SENSOR VALVE MAY RESULT IN THE LOSS OF BRAKING FORCE ON THE CAR.

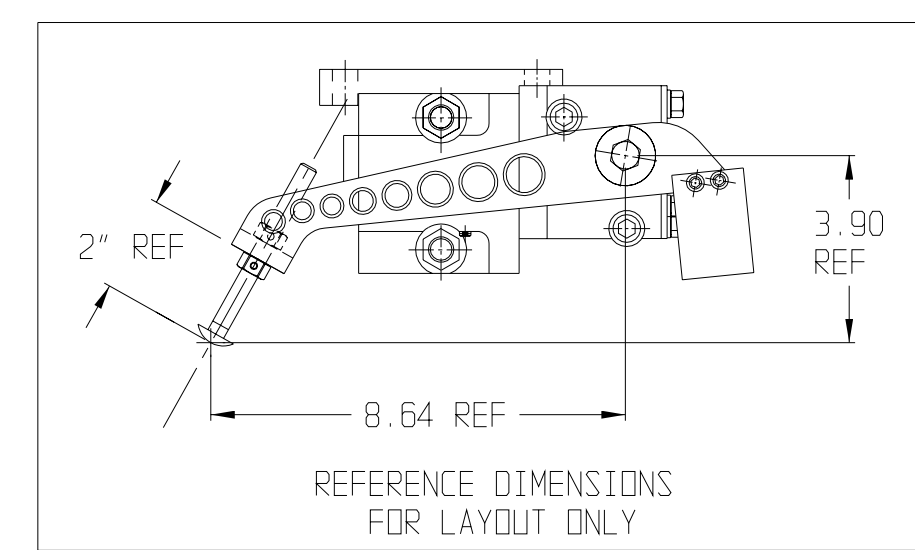
ADJUSTMENT

1. ADJUSTMENT MUST BE DONE ON AN EMPTY CAR AND LEVEL TRACK. (APPROX. 9 3/4 SPRING HEIGHT)
2. ADJUSTMENT BLOCK THICKNESS TO BE 1/5 THE SPRING DEFLECTION BETWEEN A LIGHT AND A LOADED CAR ON A NEW CAR FOR WHICH THE MOUNTING HEIGHT HAS BEEN INCREASED FOR LUBRICATION PADS AND CAR SETTLING. THE ADJUSTMENT BLOCK SHOULD BE INCREASED A LIKE AMOUNT.

NOTE

SIGNIFICANT REQUIRED FEATURE - THE TOP SURFACE OF THE SIDE FRAME IS TO BE FLAT FOR 12 1/2 MIN. LENGTH ON EITHER SIDE OF CENTER. AS SHOWN IN A.A.R. MANUAL.

MAXIMUM INSTALLATION MOUNTING DIMENSIONS						
SIDE FRAME IDENTIFICATION	"A"	"B"	"C"	"D"	"E"	"F"
EXAMPLE 36" DIA. WHEELS 6 1/2 X 12 JOURNALS 12 1/2" FLAT 7/8 RISE	12 13/16	3 11/16	3 13/16	12 9/32	9 5/8	7 3/4
AAR MANUAL D-8 1972 36" DIA. WHEELS 6 1/2 X 12 JOURNALS 12 1/2" FLAT 1 1/4 RISE	11 3/4	2 23/32	3 9/32	12 9/32	8 1/2	6 5/8
AAR MANUAL D-8A 1972 38" DIA. WHEELS 6 1/2 X 12 JOURNALS 12 1/2" FLAT 2 1/4 RISE	11 1/8	2 1/8	2 3/4	11 11/16	7 7/8	6
AAR MANUAL D-8B 1972 38" DIA. WHEELS 6 1/2 X 12 JOURNALS 12 1/2" FLAT 3 1/4 RISE	10 9/16	1 5/8	2 5/32	11 1/8	7 3/8	5 1/2



NOTE:
UNLESS OTHERWISE SPECIFIED
DECIMAL DIMENSIONS = ± .03
FRACTION DIMENSIONS = ± 1/32

APPROXIMATE WEIGHT 10 LBS.

ELLCON NATIONAL
50 BEECHTREE BLVD. GREENVILLE, S.C. 29604

SENSOR VALVE INSTALLATION

SCALE NONE DATE 12-28-92 REV. D
DRAWN D. BRUSHWOOD
CHECKED R.L.C.
D-32438