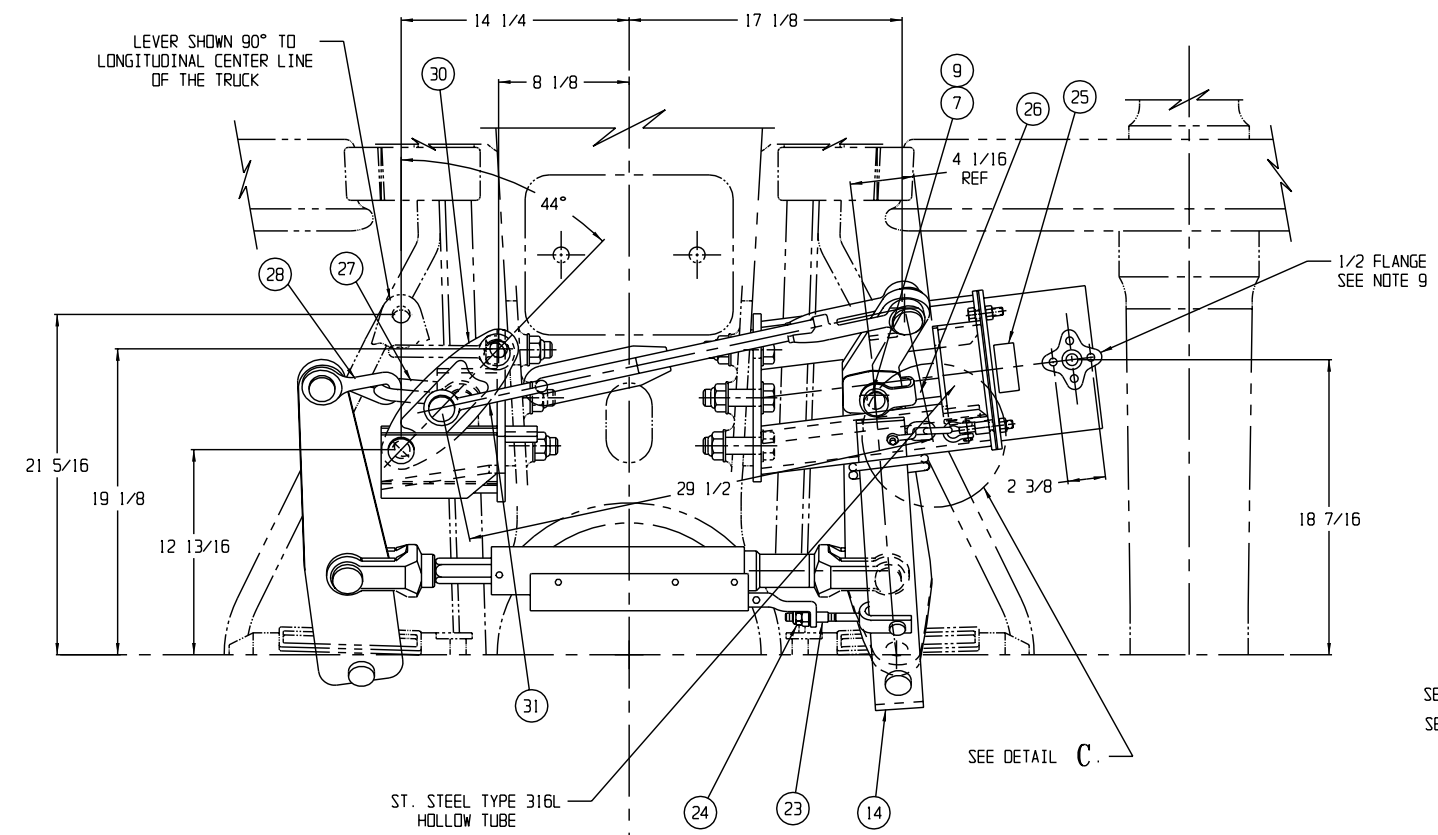
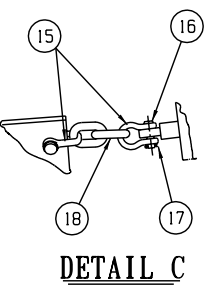
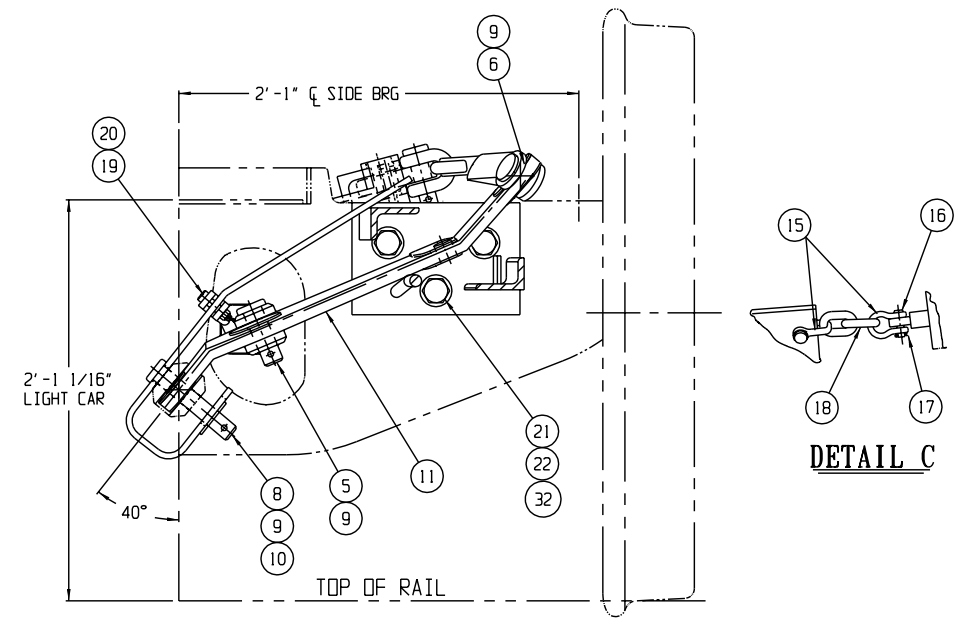
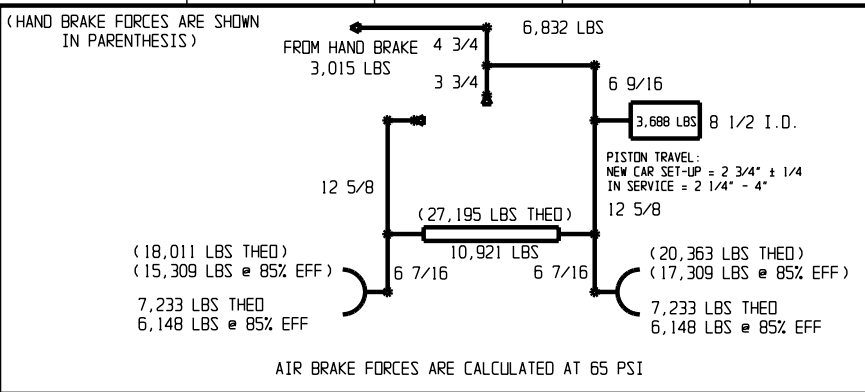


COVERED BY PATENTS
U.S. 4312428
CANADA 1163931

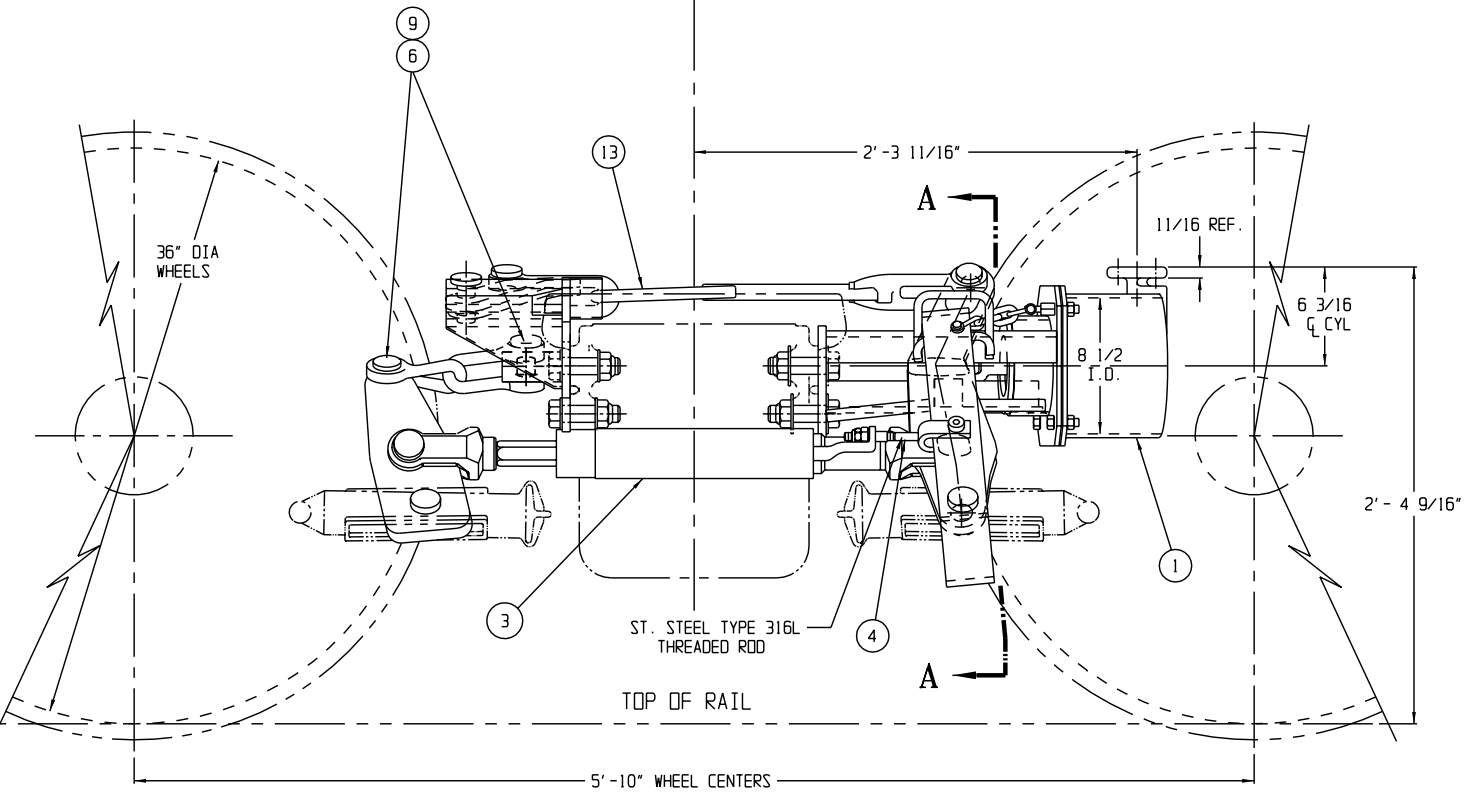
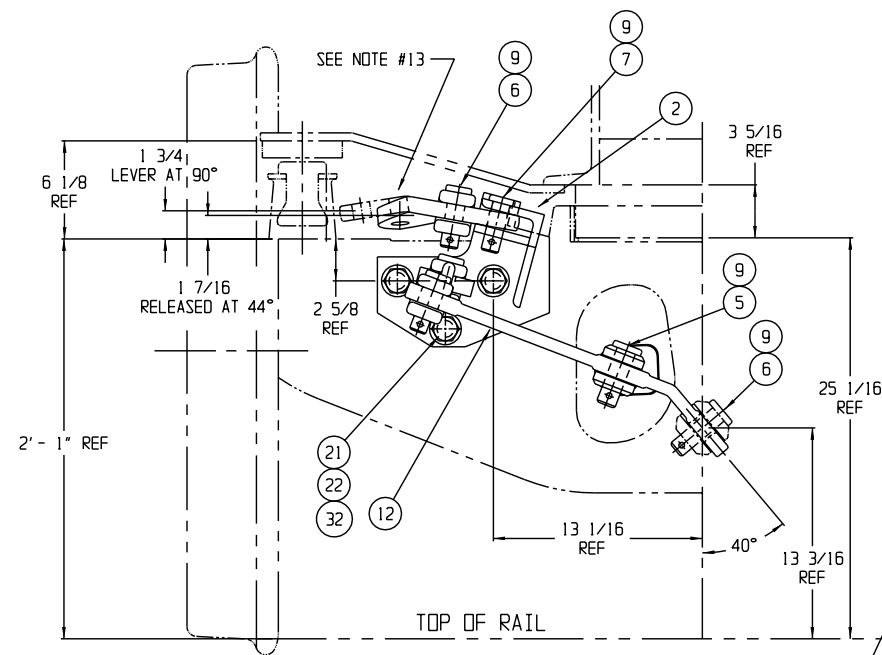
REVISIONS			
LTR	DATE	DESCRIPTION	BY
A	05-31-00	ISSUED PER ECN # 1678 4034-27 WAS 4034-25 AND 348 WAS 5/16 IN ITEM 9. ASSEMBLY WAS APPLIED IN THE TITLE BLOCK. PER ECN #2789	MB
B	04/05/04	P/N 31438-3 (IT. 17) WAS 4034-24, ASSY 31438 WAS 34263 & IN NOTE #5 P/N 31550 WAS 34284. PER ECN #5567	PS



- NOTES:
- SEE PURCHASE ORDER FOR DRAWING NO. SHOWING TRUCK MOUNTED BRAKE AND LEVER LOCATIONS.
 - QUANTITIES SHOWN ARE FOR ONE TRUCK-SET OF MATERIAL.
 - THIS TRUCK MOUNTED BRAKE IS DESIGNED FOR USE WITH NO. 18 BRAKE BEAMS. WHEN USING ANY OTHER BRAKE BEAMS CONTACT ELLCON NATIONAL.
 - BADGE PLATE WILL BE SUPPLIED BY CARBUILDER.
 - THESE PARTS TO BE SHIPPED AS AN ASSEMBLY P/N 31550
 - TRUCK MOUNTED BRAKE IS SHOWN IN LIGHT CAR, BRAKE RELEASED, AT HAND BRAKE TRUCK WITH LIVE LEVER NO. 9548-16.
 - DO NOT LIFT USING ANY PART OF THE TRUCK MOUNTED BRAKE.
 - TORQUE NUTS (ITEM 22) TO 250-300 FT. LBS.
 - FOR AIR BRAKE CONNECTION THE CARBUILDER WILL USE (2) 1/2-13 UNC HEX HEAD SELF LOCKING CAP SCREWS.
 - THERE SHOULD BE SLACK ALLOWED IN HORIZONTAL CHAIN CONNECTION FOR A CAR TO NEGOTIATE A 180 FT. OR 150 FT. RADIUS CURVE FOR A.A.R. SPECIFICATION.
 - THE (2) PISTON TRAVEL INDICATOR DECALS ITEM 29 (P/N 32804) HAVE TO BE APPLIED BY THE CAR BUILDER TO EACH SIDE OF THE CAR IN THE CYLINDER AREA. THE DECALS ARE SHIPPED LOOSE.
 - UNLESS OTHERWISE NOTED, ALL DIMENSIONS ARE NOMINAL.
 - 6" CLEVIS, CLEVIS PIN AND COTTER, FOR HAND BRAKE CONNECTION WILL BE SUPPLIED BY CAR BUILDER.
 - THE HAND BRAKE CONNECTION ON THE MULTIPLYING LEVER (ITEM 30) IS IDENTIFIED BY "HAND BRAKE" AND IS PAINTED WHITE. INSTALL LEVER WITH THE BENT END FACING DOWN.
 - ALL WASHERS AND COTTER PINS ARE MADE FROM ST. STEEL

SEE NOTE 14---
SEE NOTE 11---

6	3958-51	WASHER, PLAIN, 1" ST. STEEL	32
1	32315	CLEVIS	31
A/R	32361-20	MULTIPLYING LEVER (8 1/2 X 3 3/4)	30
2	32804	P.T INDICATOR DECAL	29
1	31411	CLEVIS (90 R.H. TWIST)	28
1	8819	CLEVIS	27
1	9280	PUSH ROD (PART OF ITEM 1)	26
1	30252	NAMEPLATE (PART OF ITEM 1)	25
1	4493-45	NUT (ESNA), 1/2-13 (ZINC PLT PART OF IT3)	24
1	33158-1	CONTROL ARM NUT 1/2-13 ZINC PLT PART OF IT3	23
6	4493-31	NUT (ESNA), 1-8	22
6	3442-137	BOLT, 1-8 UNC X 3 3/4 LG. (GR5)	21
1	5340-4	SHOULDER BOLT, 3/8-16	20
1	4493-24	NUT (ESNA), 3/8-16 ZINC PLT	19
1	31439	CHAIN	18
2	31438-3	COTTER PIN ST. STEEL	17
2	31438-2	PIN ASSY P/N 31438	16
2	31438-1	SHACKLE	15
1	31141	ACTUATOR LEVER	14
1	33715-1	PULL ROD	13
A/R	9578-11	DEAD LEVER	12
A/R	9548-16	LIVE LEVER (HAND BRAKE TRUCK)	11
1	3958-52	WASHER, PLAIN, 1 1/4 ST. STEEL	10
10	4034-27	COTTER PIN, ST. STEEL, 3/8 X 2 1/2	9
1	30166-4	CLEVIS PIN, 1 3/32 X 5 3/8 TO C HOLE	8
2	30166-2	CLEVIS PIN, 1 3/32 X 2 1/2 TO C HOLE	7
5	30166-1	CLEVIS PIN, 1 3/32 X 3 TO C HOLE	6
2	30167-1	CLEVIS PIN, 1 7/32 X 3 TO C HOLE	5
1	34262	CONTROL ARM (PART OF ITEM 3)	4
1	7100-26SS	SLACK ADJUSTER (DOUBLE ACTING)	3
1	34025	DEAD LEVER BRACKET	2
1	34265-1	BOLSTER SADDLE AND CYLINDER ASS'Y.	1



THIS TRUCK MOUNTED BRAKE IS USED IN SALT SERVICE

ELLCON NATIONAL

50 BEECHTREE BLVD. GREENVILLE, S.C. 29605

100 TON ASSEMBLY
MODEL 8500
TRUCK MOUNTED BRAKE

SCALE 2"=1'-0" DATE 10/12/98

WEIGHT: 260 LBS PER TMB WITH HANDBRAKE LEVER (LESS BRAKE BEAMS, SHOES, KEYS AND CYLINDER HOSE)

DRAWN PS
CHECKED DMS

TMB-655-LSS B