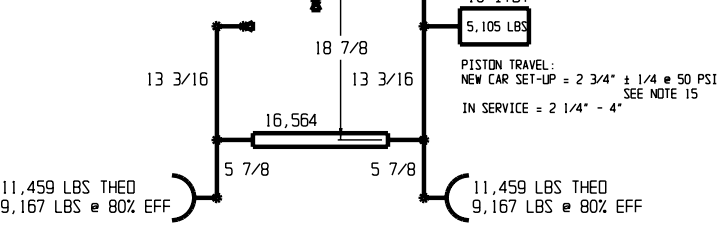
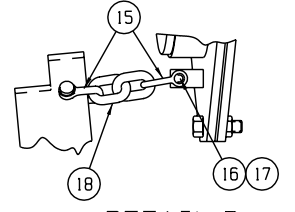


HAND BRAKE INPUT TO BE DETERMINED BY C'B'R'. FORCES SHOULD BE FIGURED AT 85% EFFICIENT.



NOTE: AIR BRAKE FORCES ARE CALCULATED AT 65 PSI.

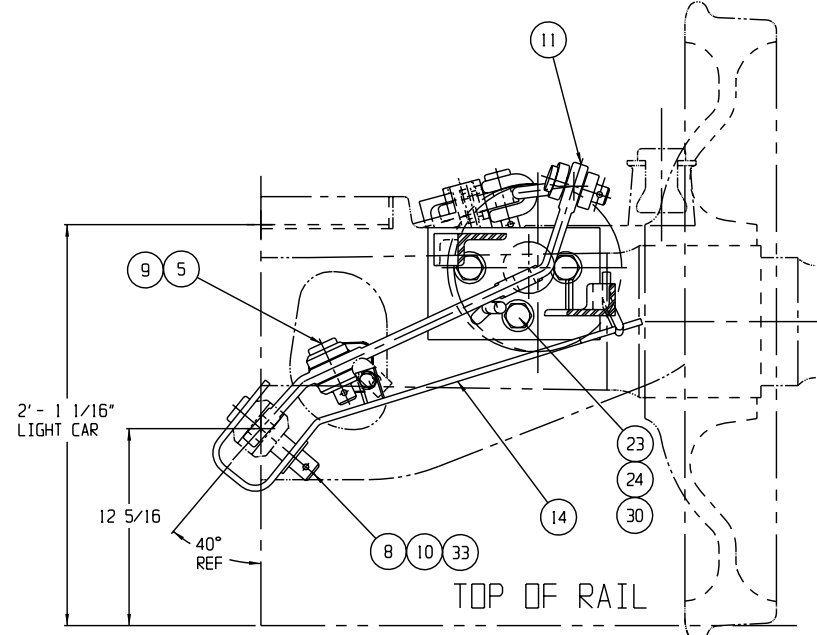


DETAIL B
SCALE: 3" = 1' - 0"

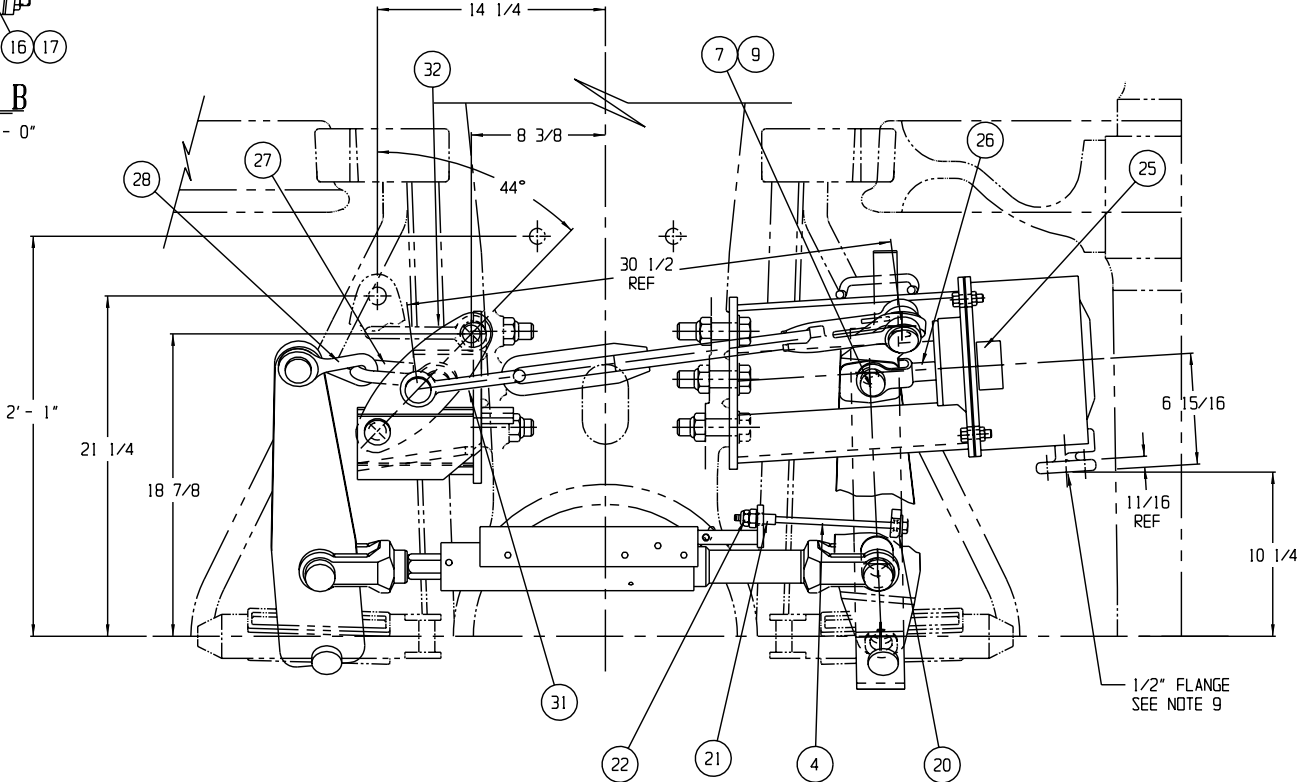
COVERED BY PATENTS
U.S. 4312428
CANADA 1163931

REVISIONS			
LTR	DATE	DESCRIPTION	BY
		ISSUED PER ECN #2413	

- NOTE:
- SEE PURCHASE ORDER FOR DRAWING NO. SHOWING TRUCK MOUNTED BRAKE AND LEVER LOCATIONS.
 - QUANTITIES SHOWN ARE FOR ONE TRUCK SET OF MATERIAL.
 - THIS TRUCK MOUNTED BRAKE IS DESIGNED FOR USE WITH NO. 24 BRAKE BEAMS. WHEN USING ANY OTHER BRAKE BEAMS CONTACT ELLCON NATIONAL.
 - BADGE PLATES WILL BE SUPPLIED BY CARBUILDER.
 - THESE PARTS TO BE SHIPPED AS AN ASSEMBLY P/N 31550.
 - TRUCK MOUNTED BRAKE IS SHOWN IN LIGHT CAR, BRAKE RELEASED, AT HAND BRAKE TRUCK WITH LIVE LEVER NO. 9548-2524
 - DO NOT LIFT USING ANY PART OF THE TRUCK MOUNTED BRAKE.
 - TORQUE NUTS (ITEM 24) TO 250-300 FT. LBS.
 - FOR AIR BRAKE CONNECTION THE CARBUILDER WILL USE (2) 1/2-13 UNC SELF LOCKING BOLTS.
 - THERE SHOULD BE SLACK ALLOWED IN HORIZONTAL CHAIN CONNECTION FOR A CAR TO NEGOTIATE A 180 FT. OR 150 FT. RADIUS CURVE AS PER A.A.R. SPECIFICATION.
 - THE (2) PISTON TRAVEL INDICATOR DECALS ITEM 29 (P/N 32804) HAVE TO BE APPLIED BY THE CAR BUILDER TO EACH SIDE OF THE CAR IN THE CYLINDER AREA. THE DECALS ARE SHIPPED LOOSE.
 - UNLESS OTHERWISE NOTED, ALL DIMENSIONS ARE NOMINAL.
 - 6" CLEVIS, CLEVIS PIN AND COTTER PIN FOR HAND BRAKE CONNECTION WILL BE SUPPLIED BY THE CAR BUILDER.
 - THE HAND BRAKE CONNECTION ON THE MULTIPLYING LEVER (IT. 32) IS IDENTIFIED BY "HAND BRAKE" AND IS PAINTED WHITE.
 - SEE ELLCON NATIONAL'S INSTALLATION AND FIELD SERVICE INSTRUCTIONS FOR SET-UP PROCEDURES.



SECTION A-A



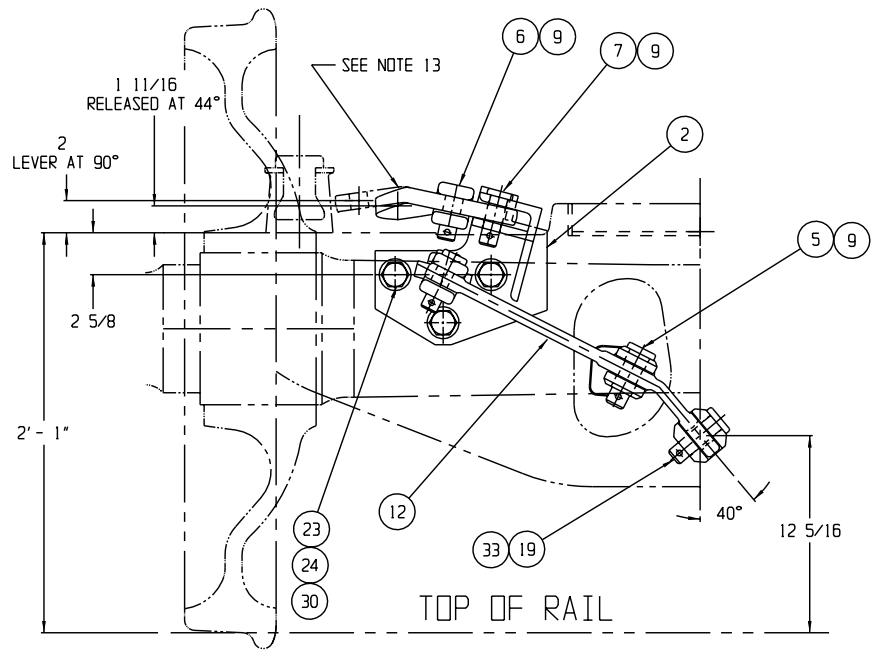
SEE NOTE 1 & 14

SEE NOTE 11

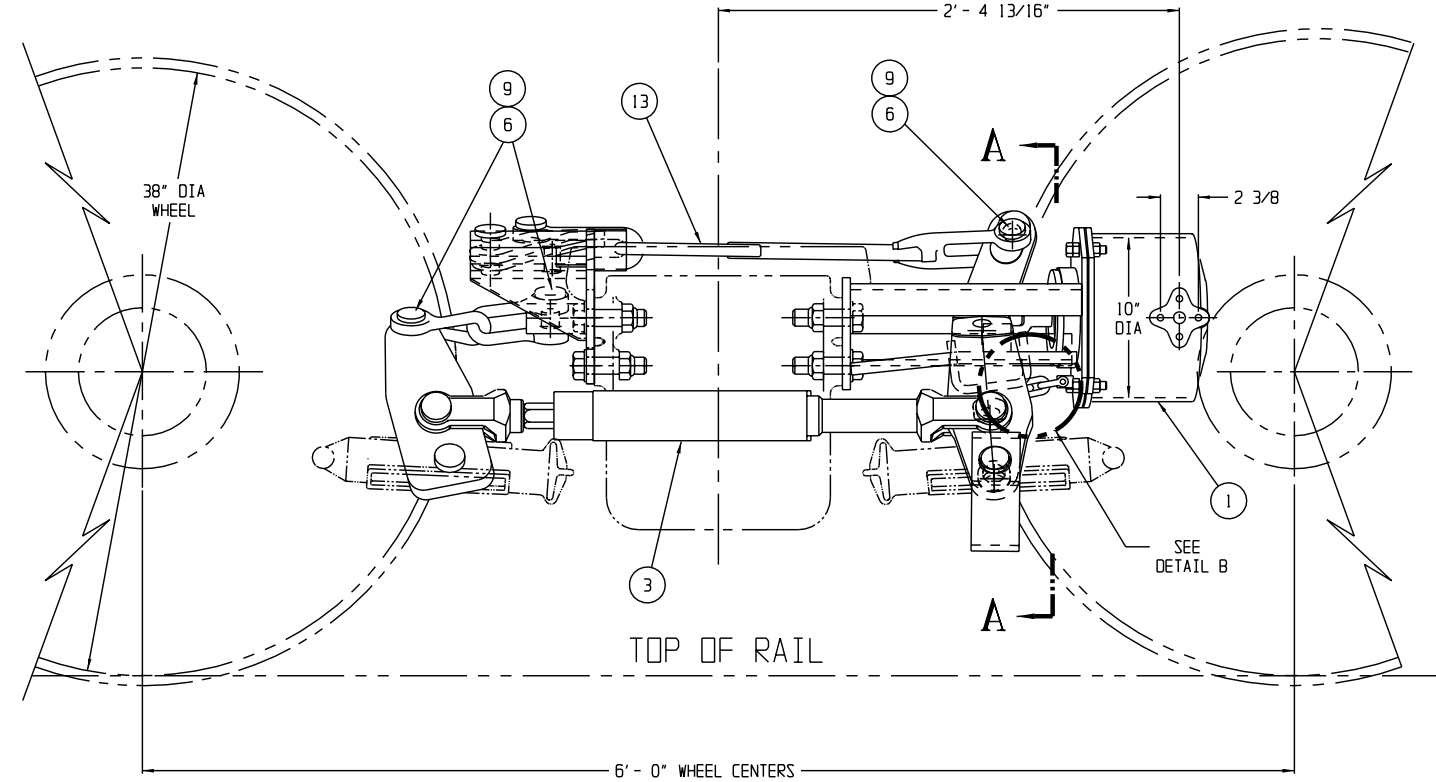
SEE NOTE 5

SEE NOTE 1

QTY.	PART NO.	DESCRIPTION	ITEM
2	9008-3	COTTER PIN, WEDGE FAST, 5/16 x 3	33
A/R	32361-20	MULTIPLYING LEVER (8 1/2 X 3 3/4)	32
1	32315	CLEVIS	31
6	3958-48	WASHER, PLAIN HARDENED 1"	30
2	32804	P.T INDICATOR DECAL	29
1	31411	CLEVIS (90 R.H. TWIST)	28
1	8819	CLEVIS	27
1	30218	PUSH ROD (PART OF ITEM 1)	26
1	30252	NAMEPLATE (PART OF ITEM 1)	25
6	4493-31	NUT (ESNA), 1-8	24
6	3442-137	BOLT 1-8 UNC X 3 3/4 LG. (GR. 5)	23
1	4493-35	NUT (ESNA), 1/2-13 (PART OF ITEM 3)	22
1	33158	CONTROL ARM NUT (PART OF ITEM 3)	21
1	3958-45	WASHER, PLAIN 1/2 (PART OF ITEM 3)	20
1	30538-1	CLEVIS PIN 1 11/32 X 3 TO C HOLE	19
1	31439	CHAIN ASSY	18
2	31438-3	COTTER PIN	17
2	31438-2	PIN	16
2	31438-1	SHACKLE	15
1	30835-1	ACTUATOR LEVER	14
1	34392-1	PULL ROD	13
A/R	9578-3424	DEAD LEVER	12
A/R	9548-1524	LIVE LEVER (HAND BRAKE TRUCK)	11
1	3958-35	WASHER, PLAIN, 1 3/8	10
8	9008-2	COTTER PIN, WEDGE FAST, 5/16 X 2 1/2	9
1	30538-2	CLEVIS PIN, 1 11/32 X 5 3/8 TO C HOLE	8
2	30166-2	CLEVIS PIN, 1 3/32 X 2 1/2 TO C HOLE	7
4	30166-1	CLEVIS PIN, 1 3/32 X 3 TO C HOLE	6
2	30167-1	CLEVIS PIN, 1 7/32 X 3 TO C HOLE	5
1	30836	CONTROL ROD 1/2-13 (PART OF ITEM 3)	4
1	7100-22	SLACK ADJUSTER (DOUBLE ACTING)	3
1	34025	DEAD LEVER BRACKET	2
1	33810-1	BOLSTER SADDLE AND CYLINDER ASS'Y.	1



TOP OF RAIL



TOP OF RAIL

TOLERANCES AND FINISHES UNLESS OTHERWISE NOTED
DECIMALS .XX
DECIMALS .XXX
ANGLES ±
FRACTIONS ±
DRILLED HOLE DIAMETERS
BREAK ALL SHARP CORNERS AND EDGES
C'SK ALL TAPPED HOLES 110° ± ONE
THREAD DEEP
MACHINED SURFACES 125/

ELLCON NATIONAL
30 BEECHTREE BLVD. GREENVILLE, S.C. 29605

125 TON ASSEMBLY
MODEL 8500
TRUCK MOUNTED BRAKE

MATERIAL:
WEIGHT: 281 LBS PER TMB
WITH HANDBRAKE LEVER
(LESS BRAKE SHOES,
KEYS AND CYLINDER HOSE)

SCALE 2" = 1' - 0"	DATE 01/03/00	REV.
DRAWN PS	CHECKED PSPT	TMB-614-LK

NEXT ASS'Y	USED ON
------------	---------