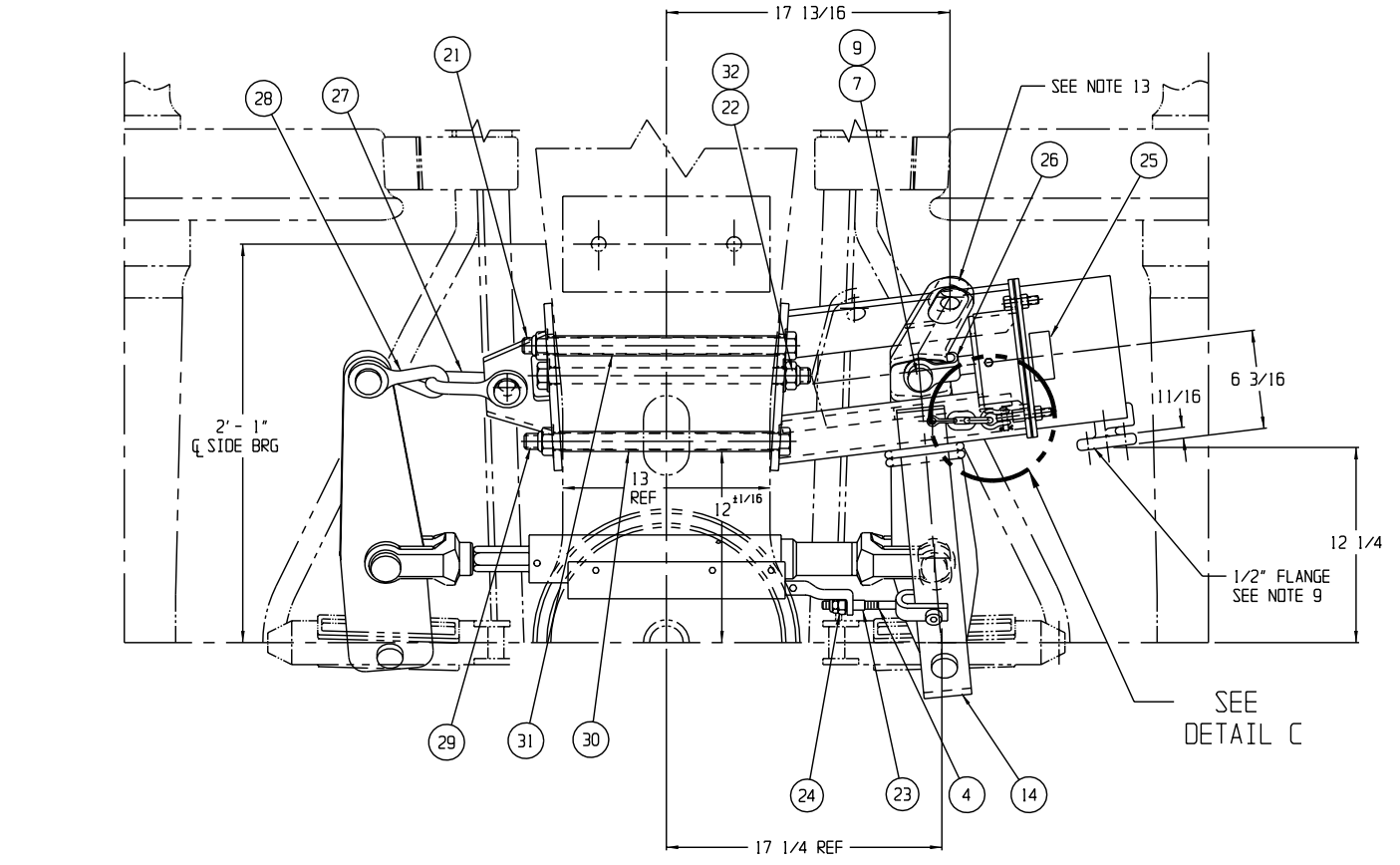
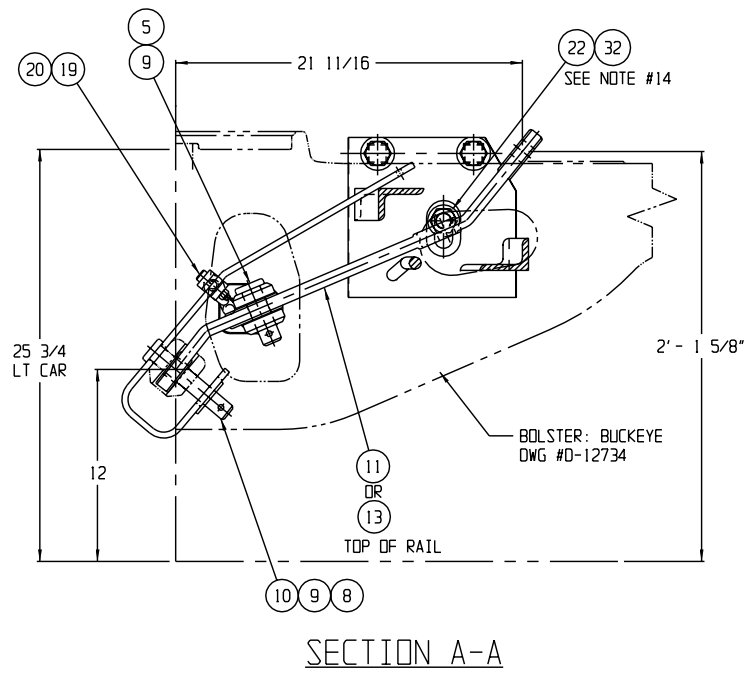
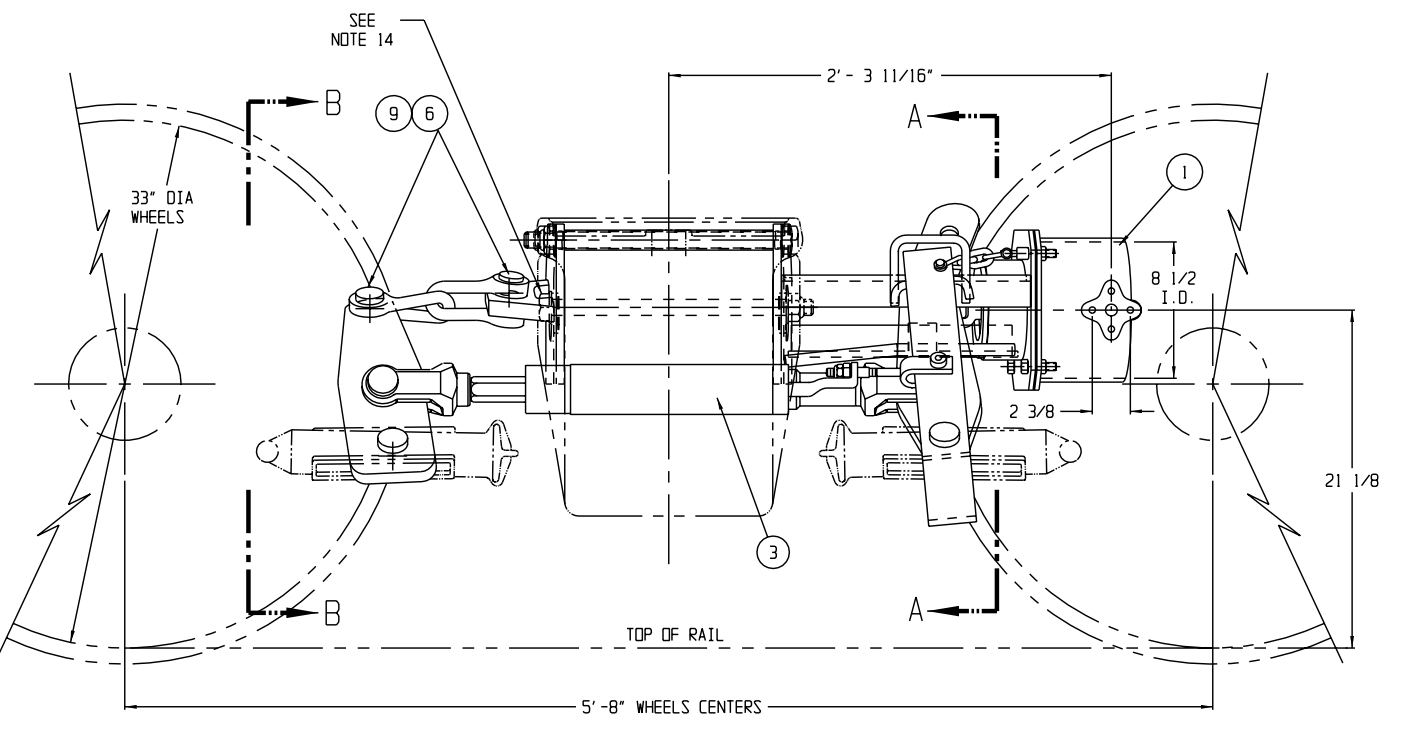
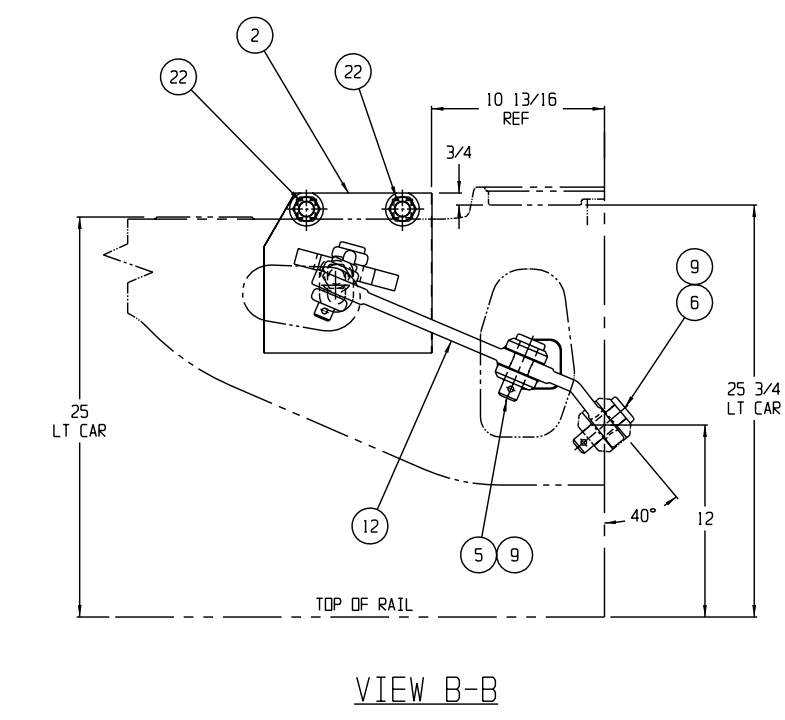


COVERED BY PATENTS  
U.S. 4312428  
CANADA 1163931

REVISIONS				REVISIONS			
LTR	DATE	DESCRIPTION	BY	LTR	DATE	DESCRIPTION	BY
C	10/11/01	CHANGED: PICTURE OF ITEM 2 (DEAD LEVER BRK) AND ORIENTATION OF ITEM 21 (BOLT LOW CENTER) PER ECN #3660	PS	A	10-17-95	ADDED ITEM 33, NOTE 11. PER EDR 95-561	LPS
				B	3-8-01	ITEM 1 WAS P/N 32800-1, ITEM 2 WAS P/N 32810-1, ITEM 23 WAS P/N 3443-33, ITEM 30 WAS P/N 9193-29, ITEM 31 WAS P/N 9193-30; ADDED NOTE 5, 9, 12, 13 AND 15; AIR BRAKE FORCES WERE CALCULATED @ 50 PSI; IN SECTION A-A, ADDED DIM'S 12 & 25 3/4, DIM 21 11/16 WAS 1'-10 1/16", DIM 2'-1 5/8" WAS 2'-1 1/16"; IN VIEW B-B, ADDED DIM'S 40", 25 3/4 & 3/4, REMOVED DIM 1 5/8; IN SIDE VIEW, ADDED DIM 2 3/8, REMOVED DIM'S 11/16 & 6 3/16, DIM 21 1/8 WAS 2'-3 5/16", DIM 2'-3 1/16" WAS 2'-3 1/2"; IN TOP VIEW, ADDED DIM'S 17 1/4, 11/16, 6 3/16 & 17 13/16, REMOVED DIM 2 3/8, DIM 12 WAS 12 5/8, DIM 12 1/4 WAS 18 5/16. ECN #3900	AKH



- NOTES:
- SEE PURCHASE ORDER FOR DRAWING NO. SHOWING TRUCK MOUNTED BRAKE AND LEVER LOCATIONS.
  - QUANTITIES SHOWN ARE FOR ONE TRUCK-SET OF MATERIAL.
  - THIS TRUCK MOUNTED BRAKE IS DESIGNED FOR USE WITH NO. 18 BRAKE BEAMS. WHEN USING ANY OTHER BRAKE BEAMS CONTACT ELLCON NATIONAL.
  - BADGE PLATE WILL BE SUPPLIED BY CARBUILDER.
  - THESE PARTS MAKE ASSEMBLY P/N 31550.
  - TRUCK MOUNTED BRAKE IS SHOWN IN LIGHT CAR, BRAKE RELEASED, AT HAND BRAKE TRUCK WITH LIVE LEVER NO. 9548-16.
  - DO NOT LIFT USING ANY PART OF THE TRUCK MOUNTED BRAKE.
  - TORQUE NUTS (ITEM 22) TO 250-300 FT.-LBS.
  - FOR AIR BRAKE CONNECTION THE CARBUILDER WILL USE (2) 1/2-13 UNC HEX HEAD SELF LOCKING CAP SCREWS.
  - THERE SHOULD BE SLACK ALLOWED IN HORIZONTAL CHAIN CONNECTION FOR A CAR TO NEGOTIATE A 180 FT. OR 150 FT. RADIUS CURVE FOR A.A.R. SPECIFICATION.
  - THE (2) PISTON TRAVEL INDICATOR DECALS, ITEM 33 (P/N 32804), HAVE TO BE APPLIED BY THE CAR BUILDER TO EACH SIDE OF THE CAR IN THE CYLINDER AREA. THE DECALS ARE SHIPPED LOOSE.
  - UNLESS OTHERWISE NOTED, ALL DIMENSIONS ARE NOMINAL.
  - CLEVIS, CLEVIS PIN AND COTTER PIN FOR HAND BRAKE CONNECTION, IF REQUIRED, WILL BE SUPPLIED BY THE CAR BUILDER.
  - INSTALLATION NOTE: POSITION THE MIDDLE BOLT (IT. 21) UPWARD AGAINST EDGE OF BOLSTER CUT-OUT AND TACKWELD WASHER (IT. 32) TO SADDLE PLATE. "CAUTION", DO NOT WELD ANY ITEMS TO TRUCK BOLSTER. INSTALL BOLT FROM DEAD LEVER SIDE.
  - SEE ELLCON NATIONAL'S INSTALLATION AND FIELD SERVICE INSTRUCTIONS FOR SET-UP PROCEDURES.



QTY.	PART NO.	DESCRIPTION	ITEM
2	32804	PISTON TRAVEL INDICATOR DECAL	33
2	3958-29	WASHER-PLAIN 1"	32
1	9193-4	SPACER, LONG 14 9/64 LG	31
1	9193-3	SPACER, SHORT 13 25/64 LG	30
1	3442-107	BOLT, 1-8 UNC X 16 LG (GR.5)	29
1	31411	CLEVIS (90 R.H. TWIST)	28
1	8819	CLEVIS	27
1	9894	PUSH ROD (PART OF ITEM 1)	26
1	30252	NAMEPLATE (PART OF ITEM 1)	25
1	4493-35	NUT, ESNA, 1/2-13 (PART OF ITEM 3)	24
1	33158	CONTROL ROD NUT (PART OF ITEM 3)	23
3	4493-31	NUT (ESNA), 1-8	22
2	3442-101	BOLT, 1-8 UNC X 16 1/2 LG (GR.5)	21
1	5340-4	SHOULDER BOLT, 3/8-16	20
1	4493-8	NUT (ESNA), 3/8-16	19
1	31439	CHAIN ASSY	18
2	31438-3	COTTER PIN	17
2	31438-2	PIN	16
2	31438-1	SHACKLE	15
1	31141	ACTUATOR LEVER	14
A/R	9547-31	LIVE LEVER (NON HAND BRAKE TRUCK)	13
A/R	9578-11	DEAD LEVER	12
A/R	9548-16	LIVE LEVER (HAND BRAKE TRUCK)	11
1	3958-28	WASHER, PLAIN, 1 1/4	10
7	9008-2	COTTER PIN, WEDGE FAST, 5/16 X 2 1/2	9
1	30166-4	CLEVIS PIN, 1 3/32 X 5 3/8 TO Q HOLE	8
1	30166-2	CLEVIS PIN, 1 3/32 X 2 1/2 TO Q HOLE	7
3	30166-1	CLEVIS PIN, 1 3/32 X 3 TO Q HOLE	6
2	30167-1	CLEVIS PIN, 1 7/32 X 3 TO Q HOLE	5
1	31139	CONTROL ARM (PART OF ITEM 3)	4
1	7100-26	SLACK ADJUSTER (DOUBLE ACTING)	3
1	34575-1	DEAD LEVER BRACKET	2
1	34570-1	BOLSTER SADDLE AND CYLINDER ASSY	1

**BILL OF MATERIAL**

TOLERANCES AND FINISHES UNLESS OTHERWISE NOTED

DECIMALS .xx #  
DECIMALS .xxx #  
ANGLES #  
FRACTIONS #  
DRILLED HOLE DIAMETERS #  
BREAK ALL SHARP CORNERS AND EDGES  
C.S.K. ALL TAPPED HOLES 118" x DIA  
THREAD DEEP  
MACHINED SURFACES 125/

**ELLCON NATIONAL**  
50 BEECHTREE BLVD. GREENVILLE, S.C. 29605

**70 TON ASSEMBLY  
MODEL 8500  
TRUCK MOUNTED BRAKE**

WEIGHT: 220 LBS PER TMB WITH HANDBRAKE LEVER (LESS BRAKE BEAMS, SHOES, KEYS AND CYLINDER HOSE)

SCALE 2"=1'-0" DATE 1-24-94 REV. \_\_\_\_\_

DRAWN \_\_\_\_\_  
CHECKED \_\_\_\_\_

MMM  
PS

**TMB-306-LC**

THIS DOCUMENT AND ITS CONTENTS CONTAIN CONFIDENTIAL AND PROPRIETARY INFORMATION OWNED BY ELLCON-NATIONAL, INC. AND IT AND ALL COPIES THEREOF ARE TO BE RETURNED TO ELLCON-NATIONAL WHEN SO REQUESTED. THIS DOCUMENT OR ANY PART THEREOF SHALL NOT BE REPRODUCED, COPIED, OR TRANSMITTED ELECTRONICALLY. THE INFORMATION CONTAINED HEREIN SHALL NOT BE DISCLOSED BY THE RECIPIENT TO OTHERS OR USED BY RECIPIENT WITHOUT THE PRIOR WRITTEN CONSENT SPECIFIC TO EACH CASE. ELLCON-NATIONAL, INC.