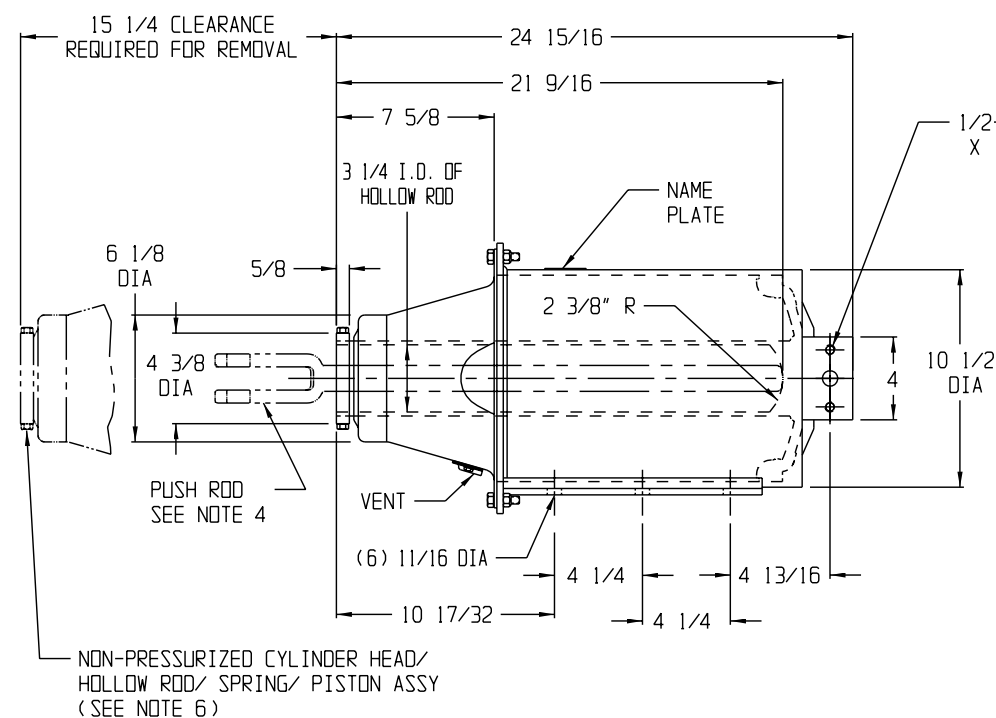
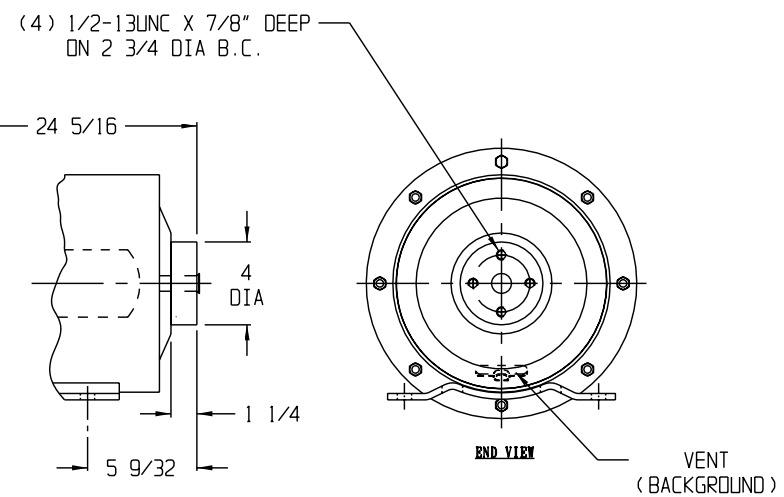
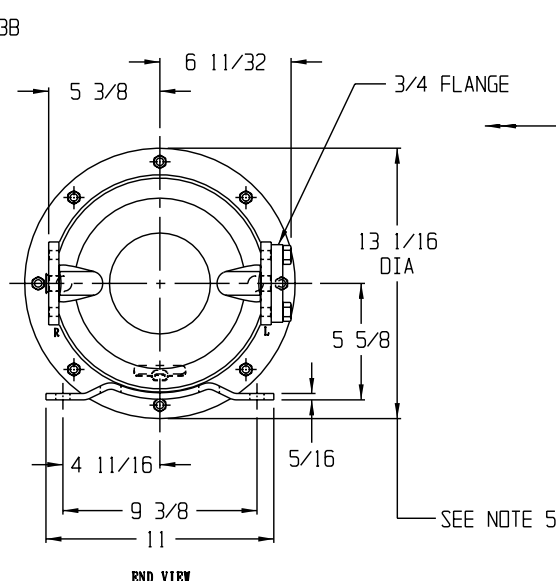


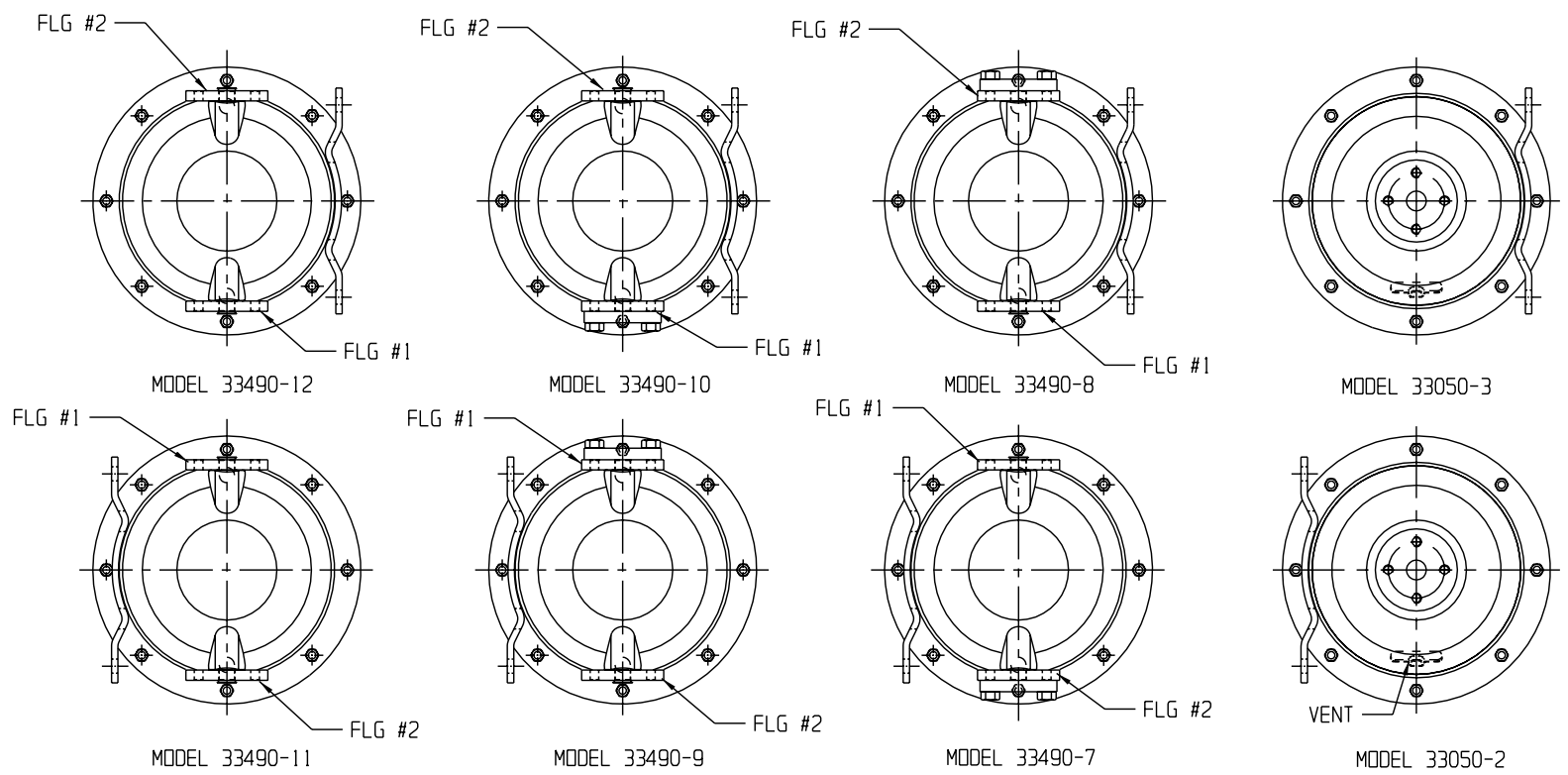
REVISIONS			
LTR	DATE	DESCRIPTION	BY
		ISSUED PER ECN # 3614	
A	7/03/03	CHANGED PICTURE OF NON-PRESSURE HEAD & CYL SUPPORT. DIM 7 5/8 WAS 7 9/16 & 6 1/8 DIA WAS 6 1/4. WEIGHT WAS 105 LBS. ECN #5012	PS
B	10/27/03	IN "TECH DATA" REVISED THE WEIGHT VALUES. PER ECN #5257	PS
C	05/05/05	RELOCATED THE NAME PLATE. ECN #6221	PS
D	08/18/06	UPDATED PICTURE OF AIR INLET. ECN #7179	PS



SIDE INLET MODEL 33490-1



REAR INLET MODEL 33050
(ALL DIMENSIONS THE SAME AS MODEL 33490 EXCEPT AS NOTED)



- NOTES:
1. ALL PADS ARE FINISHED.
 2. THE VENT MUST BE LOCATED AS SHOWN (POINTING DOWN).
 3. ALL DIMENSIONS NOMINAL.
 4. PUSH ROD TO BE SUPPLIED BY CARBUILDER.
 5. CAR MEMBERS MUST CLEAR THIS POINT BY AT LEAST 1/16"
 6. FOR INFORMATION ON NON-PRESSURIZED CYLINDER HEAD/ HOLLOW ROD/ SPRING/ PISTON ASSY SEE DRAWING B-34086.

TECHNICAL DATA:

- EFFECTIVE PISTON AREA-----78.56 SQ. IN.
- MAX. WORKING PRESSURE-----110 P.S.I.
- MAX. PISTON STROKE-----12 1/2"
- WEIGHT P/N 33050-----94 LBS.
- WEIGHT P/N 33490-----99 LBS
- DEAD VOLUME P/N 33050-----24 CU IN
- DEAD VOLUME P/N 33490-----25 CU IN
- AVERAGE SPRING-----327 LBS COUNTER FORCE (AT 8" PISTON TRAVEL)

ALL THESE OPTIONS ARE MADE FROM P/N 33050 AND 33490-1
LOOKING AT PRESSURE HEAD OF CYLINDER
(END VIEW)

SEE DWG C-34080 FOR MORE OPTIONS

THIS DOCUMENT AND ITS CONTENTS CONTAIN CONFIDENTIAL AND PROPRIETARY INFORMATION OWNED BY ELLCON-NATIONAL, INC. AND IT AND ALL COPIES THEREOF ARE TO BE RETURNED TO ELLCON-NATIONAL WHEN SO REQUESTED. THIS DOCUMENT OR ANY PART THEREOF SHALL NOT BE REPRODUCED, COPIED, OR TRANSMITTED ELECTRONICALLY. THE INFORMATION CONTAINED HEREIN SHALL NOT BE DISCLOSED BY THE RECIPIENT TO OTHERS OR USED BY RECIPIENT WITHOUT THE PRIOR WRITTEN CONSENT SPECIFIC TO EACH CASE. ELLCON-NATIONAL, INC.

AAR APPROVED

ELLCON NATIONAL
50 BEECHTREE BLVD. GREENVILLE, S.C. 29605

10" X 12" ABU
BRAKE CYLINDER
OUTLINE DIMENSIONS

SCALE 2"=1'-0" DATE 7-10-01 REV.

DRAWN KLS
CHECKED P.SOPT

C-34630

C-34630 D

A