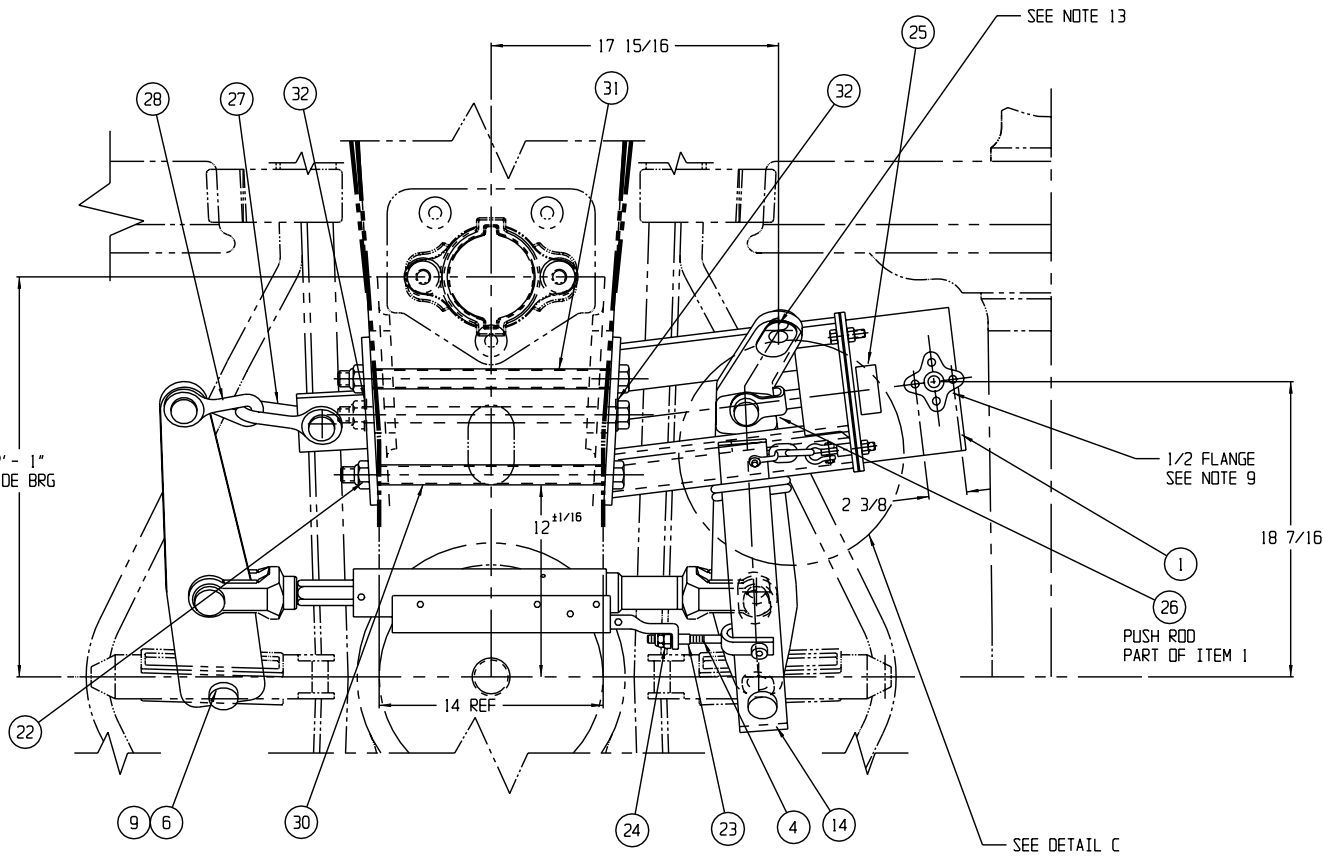
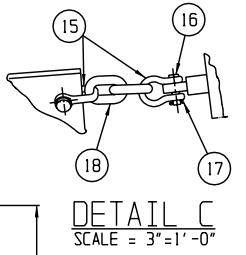
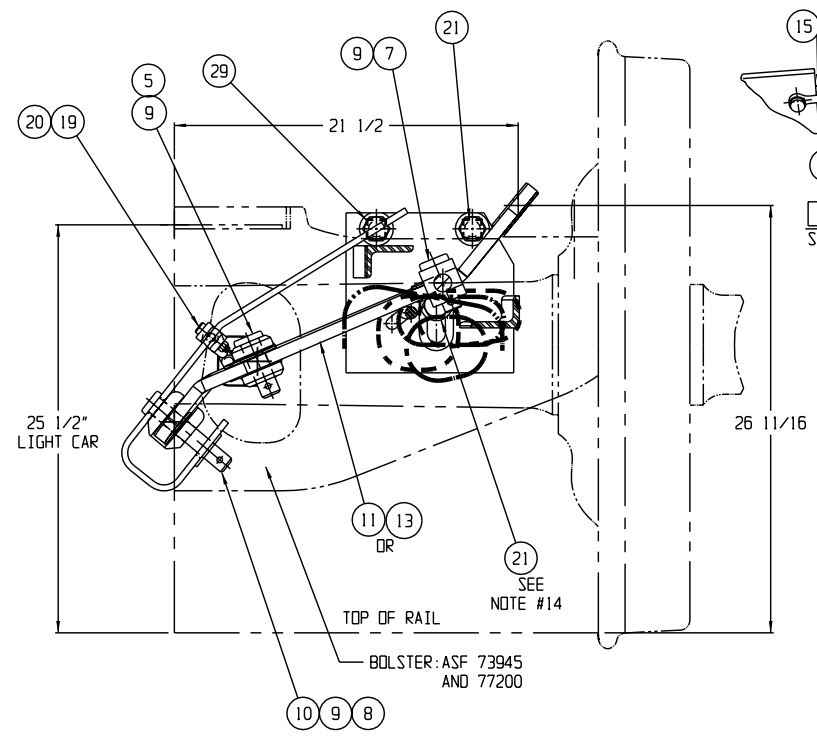
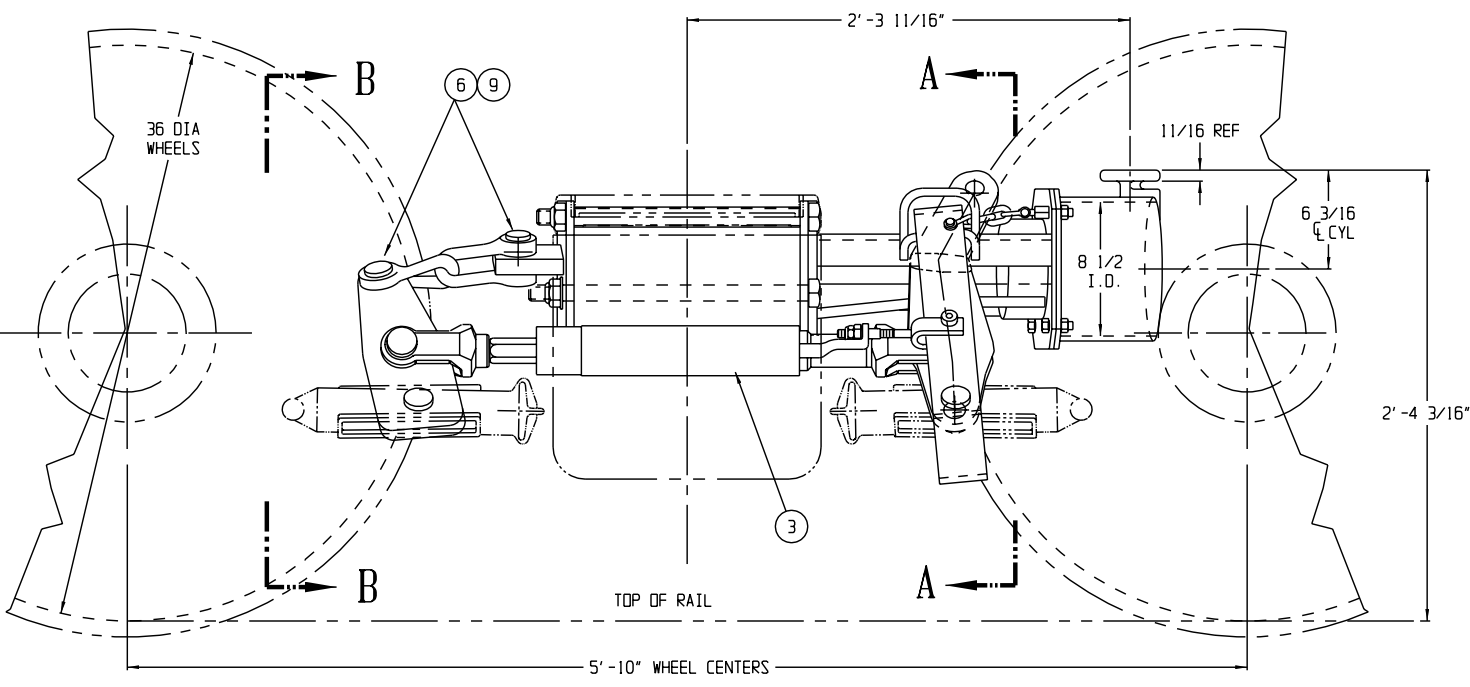
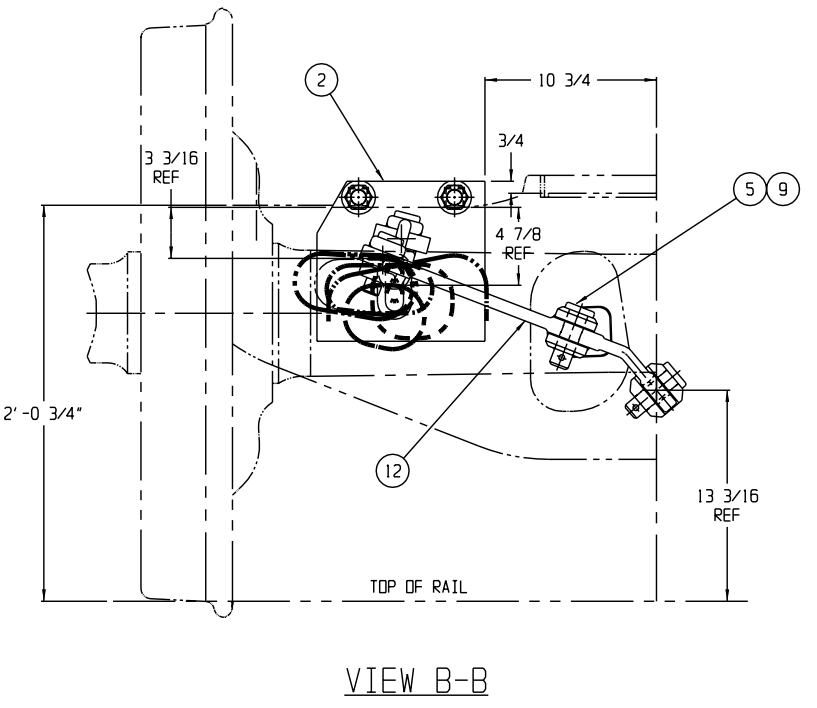


COVERED BY PATENTS  
 U.S. 4312428  
 CANADA 1163931

REVISIONS			
LTR	DATE	DESCRIPTION	BY
A	10-17-95	ADDED ITEM 33, NOTE 11 AND SEE NOTE 11 AT F4 AT ITEM 13 PER ECR 95-561	LPS
B	6-30-97	REDRAWN WITH CHANGES: ITEM 23 P/N 33158 WAS P/N 3443-33, SCALE OF DWG WAS 1 1/2"=1'-0". REARRANGED NOTES, DIM 2'-3/4" WAS 2'-1", DIM 2'-3 11/16" WAS 2'-3 15/16" PER ECR #438	ARCH
C	2-23-99	ADDED NOTE 15, AIR BRAKE FORCES WERE CALCULATED @ 50 PSI. PER ECR #1890	JT
D	9-12-01	DIM 2'-4 3/16" WAS 2'-4 3/8". REVISED NOTES 5 & 9. ADDED DIM: 21 1/2, 26 11/16 (SEC A-A) AND 17 15/16 (TOP VIEW). PER ECR # 3767	KLS



- NOTES:
- SEE PURCHASE ORDER FOR DRAWING NO. SHOWING TRUCK MOUNTED BRAKE AND LEVER LOCATIONS.
  - QUANTITIES SHOWN ARE FOR ONE TRUCK-SET OF MATERIAL.
  - THIS TRUCK MOUNTED BRAKE IS DESIGNED FOR USE WITH NO. 18 BRAKE BEAMS. WHEN USING ANY OTHER BRAKE BEAMS CONTACT ELLCON NATIONAL.
  - BADGE PLATE WILL BE SUPPLIED BY CARBUILDER.
  - THESE PARTS MAKE ASSEMBLY P/N 31550.
  - TRUCK MOUNTED BRAKE IS SHOWN IN LIGHT CAR, BRAKE RELEASED, AT HAND BRAKE TRUCK WITH LIVE LEVER NO. 9548-16.
  - DO NOT LIFT USING ANY PART OF THE TRUCK MOUNTED BRAKE.
  - TORQUE NUTS (ITEM 22) TO 250-300 FT. LBS.
  - FOR AIR BRAKE CONNECTION THE CARBUILDER WILL USE (2) 1/2-13 UNC HEX HEAD SELF LOCKING SCREWS.
  - THERE SHOULD BE SLACK ALLOWED IN HORIZONTAL CHAIN CONNECTION FOR A CAR TO NEGOTIATE A 180 FT. OR 150 FT. RADIUS CURVE FOR A.A.R. SPECIFICATION.
  - THE (2) PISTON TRAVEL INDICATOR DECALS ITEM 33 (P/N 32804) HAVE TO BE APPLIED BY THE CAR BUILDER TO EACH SIDE OF THE CAR IN THE CYLINDER AREA. THE DECALS ARE SHIPPED LOOSE.
  - UNLESS OTHERWISE NOTED, ALL DIMENSIONS ARE NOMINAL.
  - CLEVIS, CLEVIS PIN AND COTTER PIN FOR HAND BRAKE CONNECTION, IF REQUIRED, WILL BE SUPPLIED BY THE CAR BUILDER.
  - INSTALLATION NOTE: POSITION BOLT (IT. 21) UPWARD AGAINST EDGE OF BOLSTER CUT-OUT AND TACKWELD WASHER (IT. 32) TO SADDLE PLATE. "CAUTION", DO NOT WELD ANY ITEMS TO TRUCK BOLSTER.
  - SEE ELLCON NATIONAL'S INSTALLATION AND FIELD SERVICE INSTRUCTIONS FOR SET-UP PROCEDURES.



QTY.	PART NO.	DESCRIPTION	ITEM
2	32804	PISTON TRAVEL INDICATOR DECAL	33
2	3958-29	WASHER-PLAIN 1"	32
1	9193-24	SPACER, LONG	31
1	9193-23	SPACER, SHORT	30
1	3442-111	BOLT, 1-8 UNC X 17 LG (GR.5)	29
1	31411	CLEVIS (90 R.H. TWIST)	28
1	8819	CLEVIS	27
1	9280	PUSH ROD (PART OF ITEM 1)	26
1	30252	NAMEPLATE (PART OF ITEM 1)	25
1	4493-35	NUT, ESNA, 1/2-13 (PART OF ITEM 3)	24
1	33158	CONTROL ROD NUT (PART OF ITEM 3)	23
3	4493-31	NUT (ESNA), 1-8	22
2	3442-104	BOLT, 1-8 UNC X 17 1/2 LG (GR.5)	21
1	5340-4	SHOULDER BOLT, 3/8-16	20
1	4493-8	NUT (ESNA), 3/8-16	19
1	31439	CHAIN ASSY	18
2	31438-3	COTTER PIN	17
2	31438-2	PIN	16
2	31438-1	SHACKLE	15
1	31141	ACTUATOR LEVER	14
A/R	9547-31	LIVE LEVER (NON HAND BRAKE TRUCK)	13
A/R	9578-11	DEAD LEVER	12
A/R	9548-16	LIVE LEVER (HAND BRAKE TRUCK)	11
1	3958-28	WASHER, PLAIN, 1 1/4	10
7	9008-2	COTTER PIN, WEDGE FAST, 5/16 X 2 1/2	9
1	30166-4	CLEVIS PIN, 1 3/32 X 5 3/8 TO Q HOLE	8
1	30166-2	CLEVIS PIN, 1 3/32 X 2 1/2 TO Q HOLE	7
3	30166-1	CLEVIS PIN, 1 3/32 X 3 TO Q HOLE	6
2	30167-1	CLEVIS PIN, 1 7/32 X 3 TO Q HOLE	5
1	31139	CONTROL ARM (PART OF ITEM 3)	4
1	7100-26	SLACK ADJUSTER (DOUBLE ACTING)	3
1	32570-1	DEAD LEVER BRACKET	2
1	32560-1	BOLSTER SADDLE AND CYLINDER ASSY	1

TOLERANCES AND FINISHES UNLESS OTHERWISE NOTED  
 DECIMALS .XX ± .02  
 DECIMALS .XXX ± .010  
 ANGLES ± 2"  
 FRACTIONS ± 1/32  
 DRILLED HOLE DIAMETERS + .010/- .001  
 BREAK ALL SHARP CORNERS AND EDGES  
 C'DSK ALL TAPPED HOLES 110° ± ONE  
 THREAD DEEP  
 MACHINED SURFACES 125/

**ELLCON NATIONAL**  
 50 BEECHTREE BLVD. GREENVILLE, S.C. 29605

**100 TON APPLICATION  
 MODEL 8500  
 TRUCK MOUNTED BRAKE**

MATERIAL:  
 WEIGHT: 220 LBS PER TMB  
 WITH HANDBRAKE LEVER  
 (LESS BRAKE BEAMS, SHOES,  
 KEYS AND CYLINDER HOSE)

SCALE 2"=1'-0" DATE 6/21/93 REV.  
 DRAWN O.B. CHECKED P. SPT

TMB-304-L D