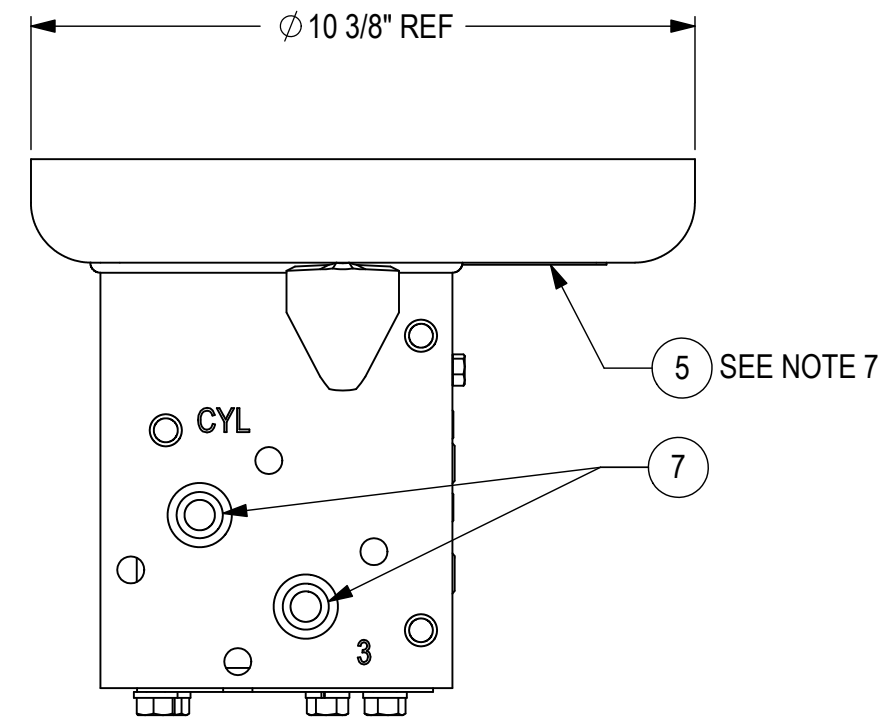
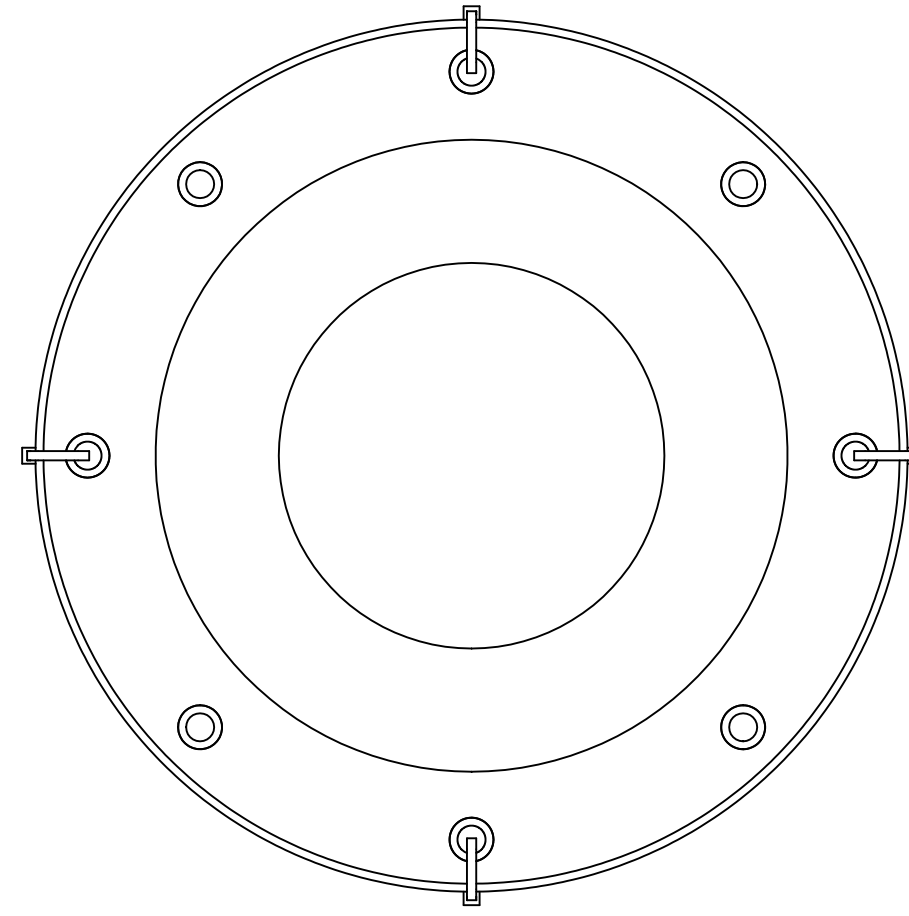
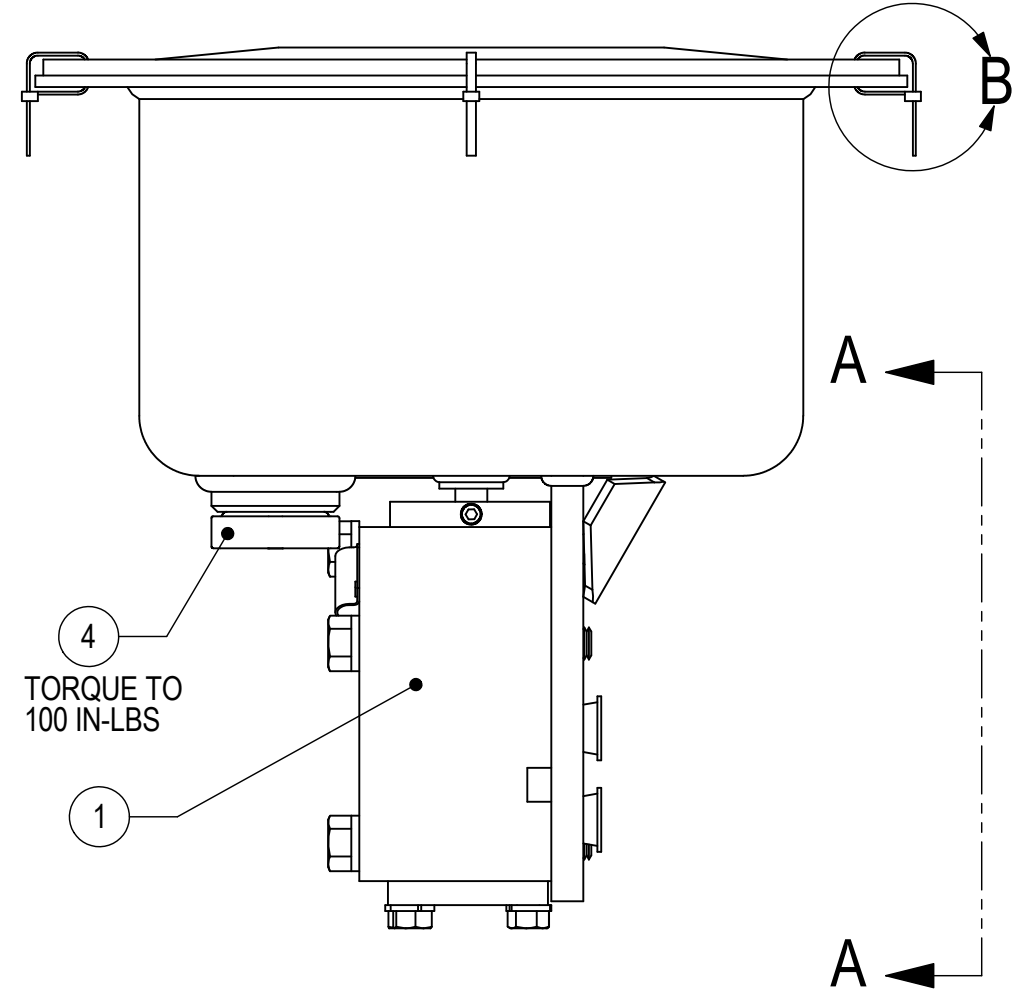
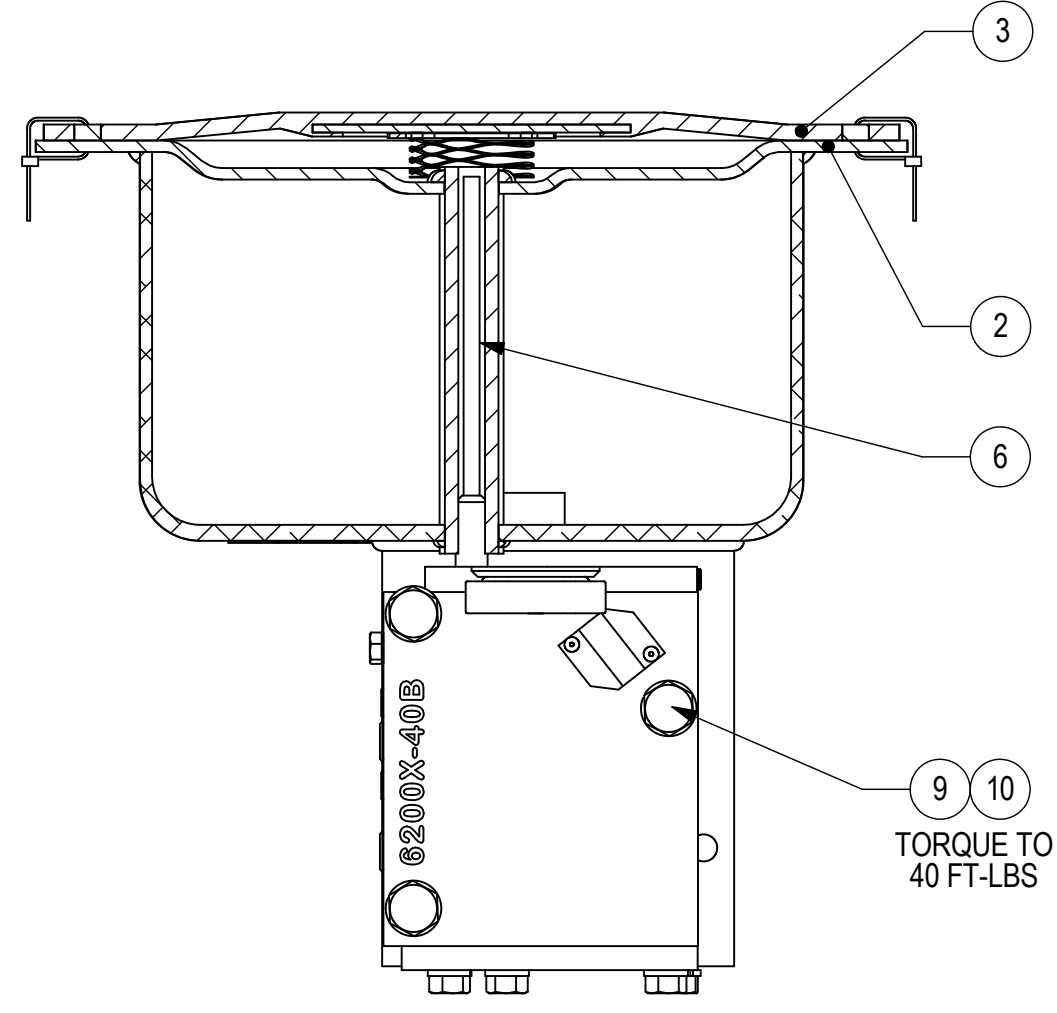


REVISIONS			
LTR	DATE	DESCRIPTION	BY
B	10/29/2003	ADDED WEIGHT & VOLUME PER ECN 5270	DAC
C	12/14/2005	ADDED NOTES 6 & 7 PER ECN 6654	DAC



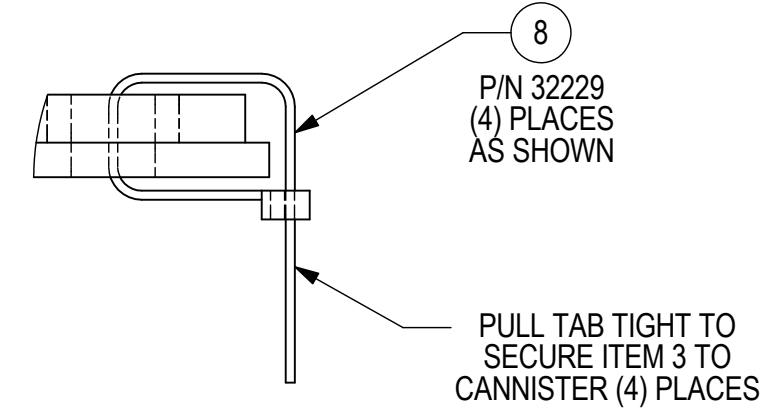
VIEW A-A



NOTES:

- 1- APPLY BLUE LOCTITE (NO. 242) TO THREADS OF ITEM 9.
- 2- SEE DRAWING C-34860 FOR OUTLINE DIMENSIONS.
- 3- "W" SUFFIX INDICATES VALVE WITH FDA APPROVED GASKET.
- 4- P/N 6200X-40BW UTILIZES GASKET ASSEMBLY P/N 34714W INSTEAD OF P/N 34714 (ITEM 3).
- 5- ALL DIMENSIONS ARE NOMINAL.
6. EXPOSED AREA OF ASSEMBLY TO BE COATED WITH A BLACK, WATER REDUCIBLE PRIMER.
7. CARBUILDER TO REMOVE PROTECTIVE TAPE FROM NAMEPLATE BEFORE CAR IS SHIPPED.

P/N 6200X-40B -- STANDARD GASKET
P/N 6200X-40BW -- FDA APPROVED GASKET



DETAIL B
SCALE 1:1

WEIGHT = 22 LBS.
 VOLUME = 418 CU.IN.

THIS DOCUMENT AND ITS CONTENTS CONTAIN CONFIDENTIAL AND PROPRIETARY INFORMATION OWNED BY ELLCON-NATIONAL, INC. AND IT AND ALL COPIES THEREOF ARE TO BE RETURNED TO ELLCON-NATIONAL WHEN SO REQUESTED. THIS DOCUMENT OR ANY PART THEREOF SHALL NOT BE REPRODUCED, COPIED, OR TRANSMITTED ELECTRONICALLY. THE INFORMATION CONTAINED HEREIN SHALL NOT BE DISCLOSED BY THE RECIPIENT TO OTHERS OR USED BY RECIPIENT WITHOUT THE PRIOR WRITTEN CONSENT SPECIFIC TO EACH CASE. ELLCON-NATIONAL, INC.

LEGEND	
∅ - DIAMETER	▭ - FLATNESS
▽ - DEPTH	// - PARALLELISM
┌ - COUNTERBORE	⊥ - PERPENDICULARITY
∨ - COUNTERSINK	◎ - CONCENTRICITY
NEXT ASSY	USED ON

MACHINING TOLERANCES AND FINISHES UNLESS OTHERWISE NOTED

DECIMALS .XX ± .02
 DECIMALS .XXX ± .010
 ANGLES ± 2°
 FRACTIONS ± 1/32
 DRILLED HOLE DIAMETERS +.010/-001
 BREAK ALL SHARP CORNERS AND EDGES
 CSK ALL TAPPED HOLES 118° x ONE THREAD DEEP
 MACHINED SURFACES 125

MATERIAL:

PART NO.	QTY	DESCRIPTION	ITEM
3391-29	3	LOCKWASHER - 1/2" (ZINC PLTD)	10
3442-132	3	H.H.C.S. - 1/2-13 X 3 3/4" (ZINC PLTD)	9
32229	4	SHIPPING TIE	8
4087-26	2	PLASTIC PROTECTOR CAP	7
31126-10	1	NAMEPLATE	6
33020	1	INDICATOR ASSEMBLY	5
34644	1	ROD	4
34714 *	1	GASKET ASSEMBLY (* SEE NOTES 3 & 4)	3
34710	1	HOUSING ASSY	2
34690	1	VALVE ASSEMBLY	1

ELLCON NATIONAL
 50 BEECHTREE BLVD. GREENVILLE, S.C. 29605

MODEL 6200X-40B
EMPTY/LOAD DEVICE

SCALE 1:3 DATE 12 MAY 03 REV. C

DRAWN DAC
 CHECKED DAC

C-6200X-40B