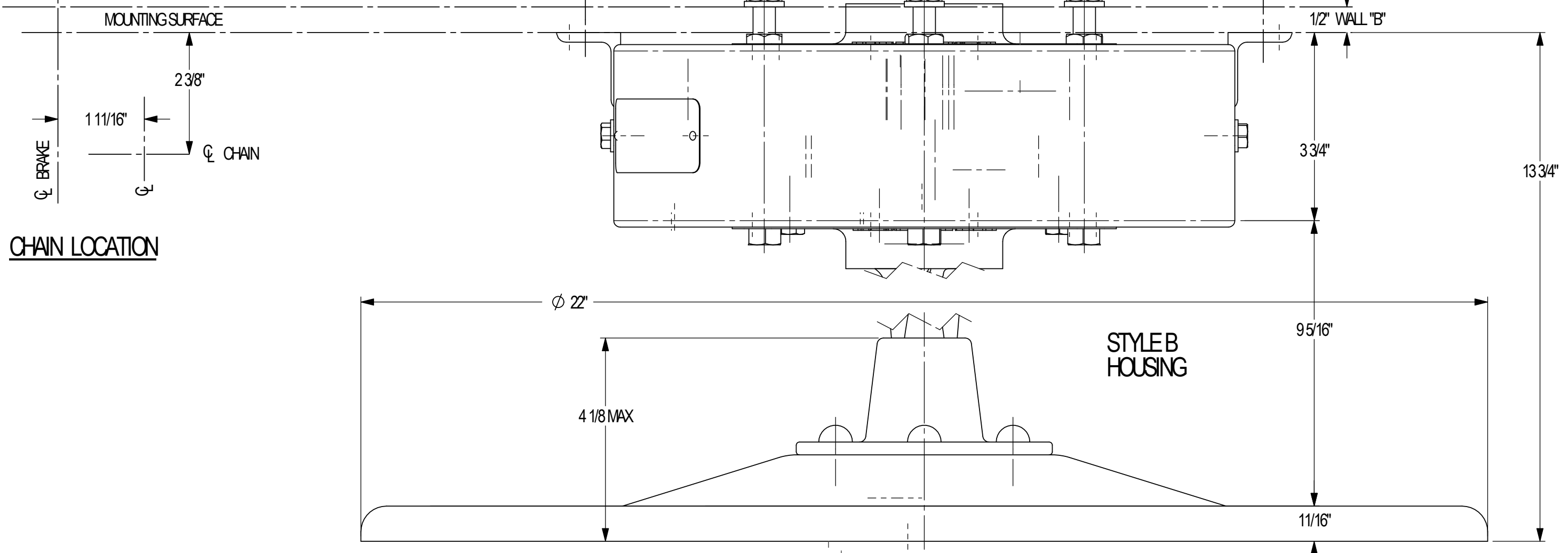


DRILLING DIAGRAM



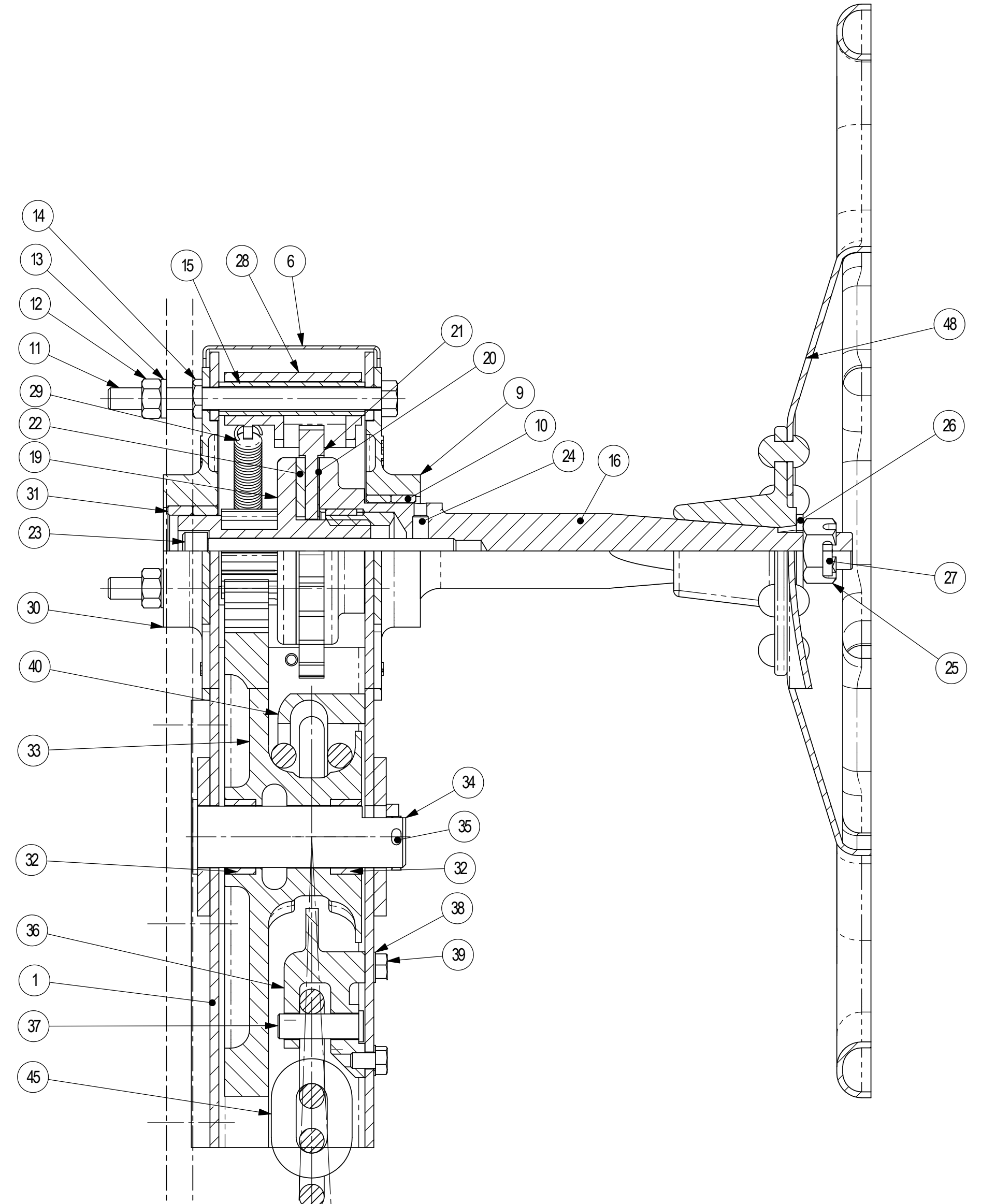
REVISIONS			
LTR	DATE	DESCRIPTION	BY
C	128-03	RETRAINING WITH REVISIONS OFFERED IN 888	MM

GENERAL DATA

BRAKE FURNISHED IN CARBON STEEL CONSTRUCTION, PRIMED FINISH

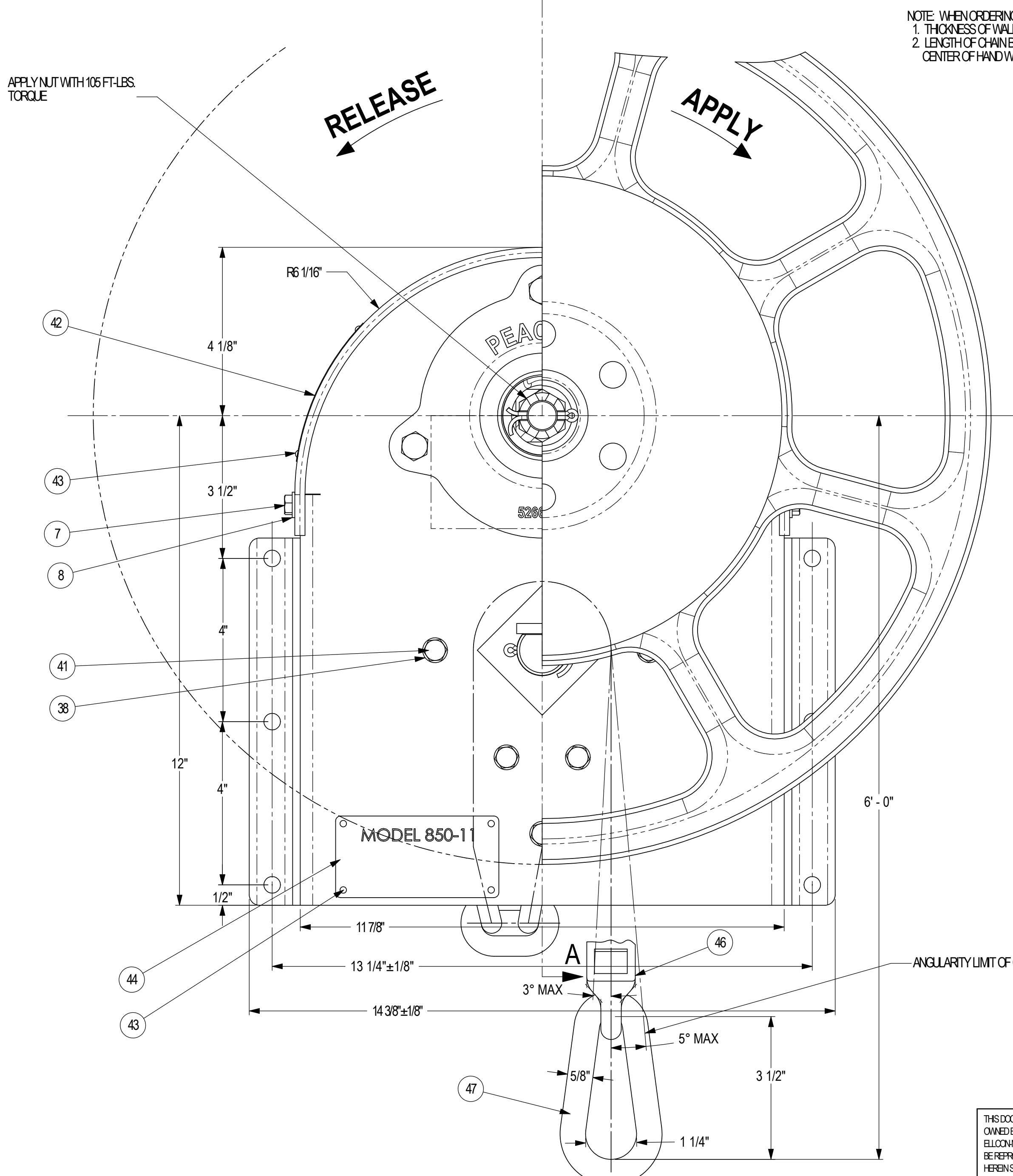
GEAR RATIO - 8:1
CHAIN TRAVEL - UNLIMITED
WEIGHT - APPROX 100 LBS

FORCES:
125 LBS ON 22" DIA HAND WHEEL - WITH SHEAVE - UNLIMITED TRAVEL - 4000 LBS
WITH AAR66 BELL CRANK - 4 3/8" TO 13 5/8" TRAVEL - 6200 LBS



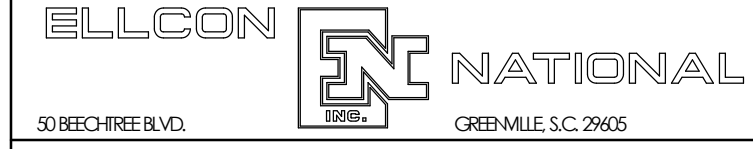
SECTION A-A

NOTE
ALL DIMENSIONS SHOWN ARE NOMINAL AND ARE SUBJECT TO COMMERCIAL TOLERANCES. IF ANY DIMENSIONS ARE CRITICAL TO THE INSTALLATION, CONTACT ELLCON NATIONAL ENGINEERING DEPARTMENT.



NOTE: WHEN ORDERING SPECIFY:
1. THICKNESS OF WALL 'B'
2. LENGTH OF CHAIN BELOW CENTER OF HAND WHEEL

PART No	QTY	DESCRIPTION	ITEM
34689	1	HOUSING	1
			2
			3
			4
			5
992-B	1	COVER	6
703	2	SCREW	7
1066	2	LOCKWASHER	8
5266-1	1	FLANGE	9
74-A	2	BEARING	10
142-D	3	BOLT	11
143-B	3	NUT	12
1087	3	LOCKWASHER	13
143	3	NUT	14
147	3	SPACER - INTERNAL	15
34700	1	PINION ASSEMBLY (COMPLETE)	16
34701	1	HAND WHEEL SHAFT	17
			18
			19
899	1	PINION GEAR	19
873	1	RELEASE DISC	20
872-C	1	RATCHET	21
874	1	FRICION DISC	22
1615	1	PINION SCREW	23
1078-C	1	SET SCREW	24
4563-1	1	SLOTTED NUT	25
3958-16	1	PLAIN WASHER	26
4034-9	1	COTTER PIN	27
887	1	HOLDING PAWL	28
888	1	HOLDING PAWL SPRING	29
5266-2	1	FLANGE	30
74-D	2	BEARING	31
32285-1	2	BEARING	32
915-B	1	CHAIN DRUM	33
723-A	1	CHAIN DRUM SHAFT	34
4034-12	1	COTTER PIN	35
919	1	HOCK	36
931	1	CHAIN PIN	37
726	5	LOCKWASHER	38
702	3	SCREW	39
1067	1	CHAIN GUIDE	40
702-D	2	SCREW	41
31818	1	WARNING LABEL	42
3338-1	6	RIVET	43
4234	1	MODEL PLATE	44
788	1	CHAIN - 1/2" - 14,000 LB.P.T. 6 - 6" OAL	45
1091-A	1	JOINER	46
18	1	END LINK	47
1672	1	HAND WHEEL	48



MODEL 850-11 BRAKE

THIS DOCUMENT AND ITS CONTENTS CONTAIN CONFIDENTIAL AND PROPRIETARY INFORMATION OWNED BY ELLCON NATIONAL, INC. AND ALL COPIES THEREOF ARE TO BE RETURNED TO ELLCON NATIONAL WHEN SO REQUESTED. THIS DOCUMENT OR ANY PART THEREOF SHALL NOT BE REPRODUCED, COPIED, OR TRANSMITTED ELECTRONICALLY. THE INFORMATION CONTAINED HEREIN SHALL NOT BE DISCLOSED BY THE RECIPIENT TO OTHERS OR USED BY RECIPIENT WITHOUT THE PRIOR WRITTEN CONSENT SPECIFIC TO EACH CASE. ELLCON NATIONAL, INC.

SCALE	12	DATE	6-5-02	REV.	
DRAWN	RJD	D-34750		C	
CHECKED	DMS				