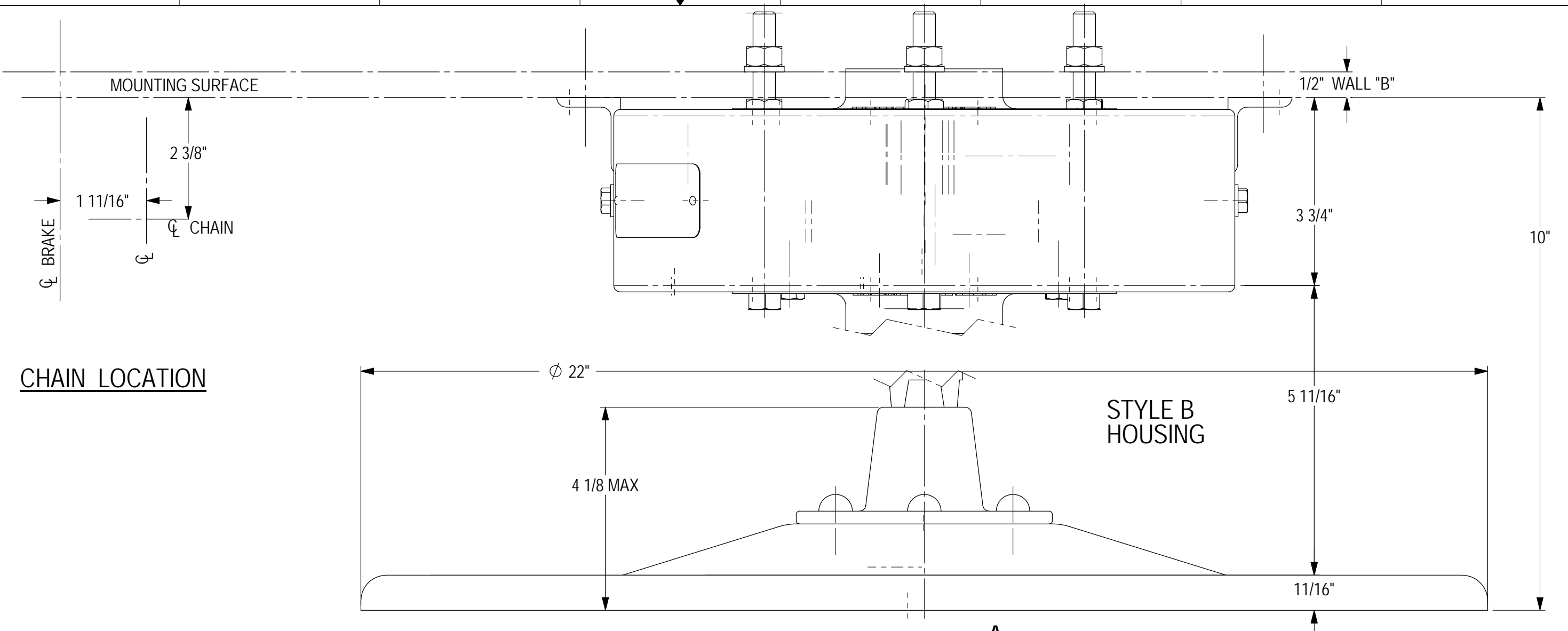
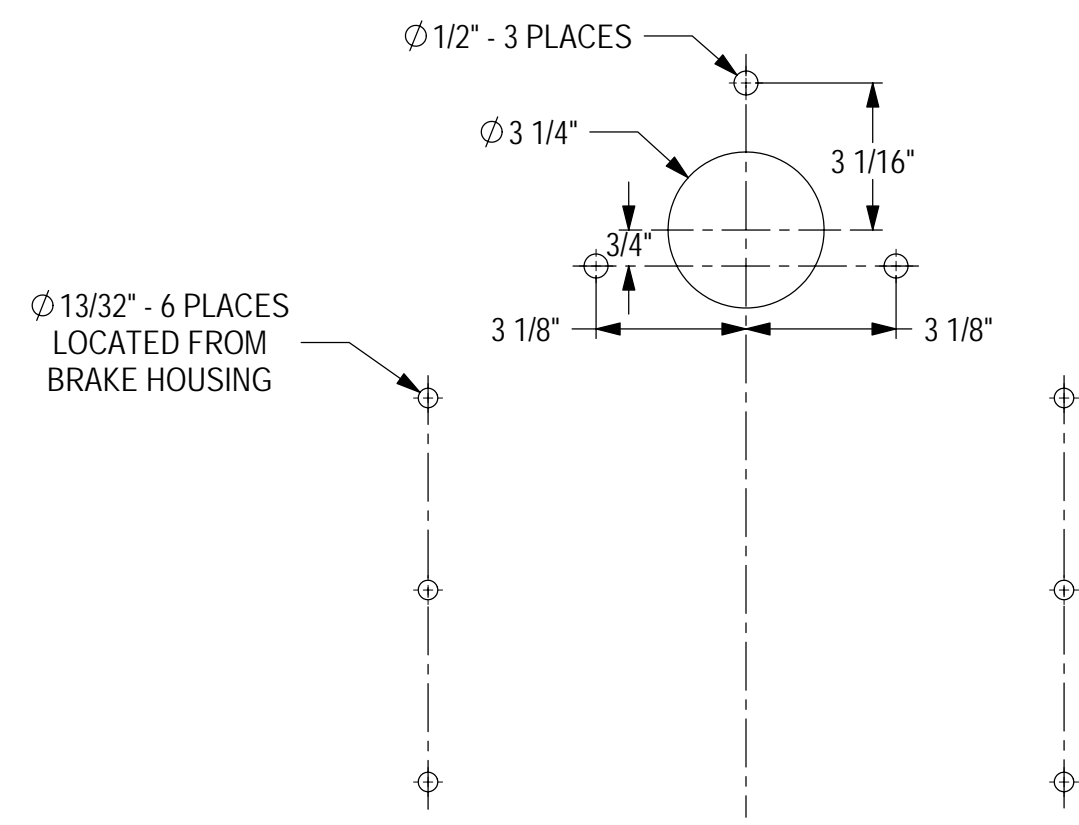


REVISIONS			
LTR	DATE	DESCRIPTION	BY
AA	3-6-03	REDRAWN ON CAD WITH REVISIONS CRP PER ECN 4593	MMW

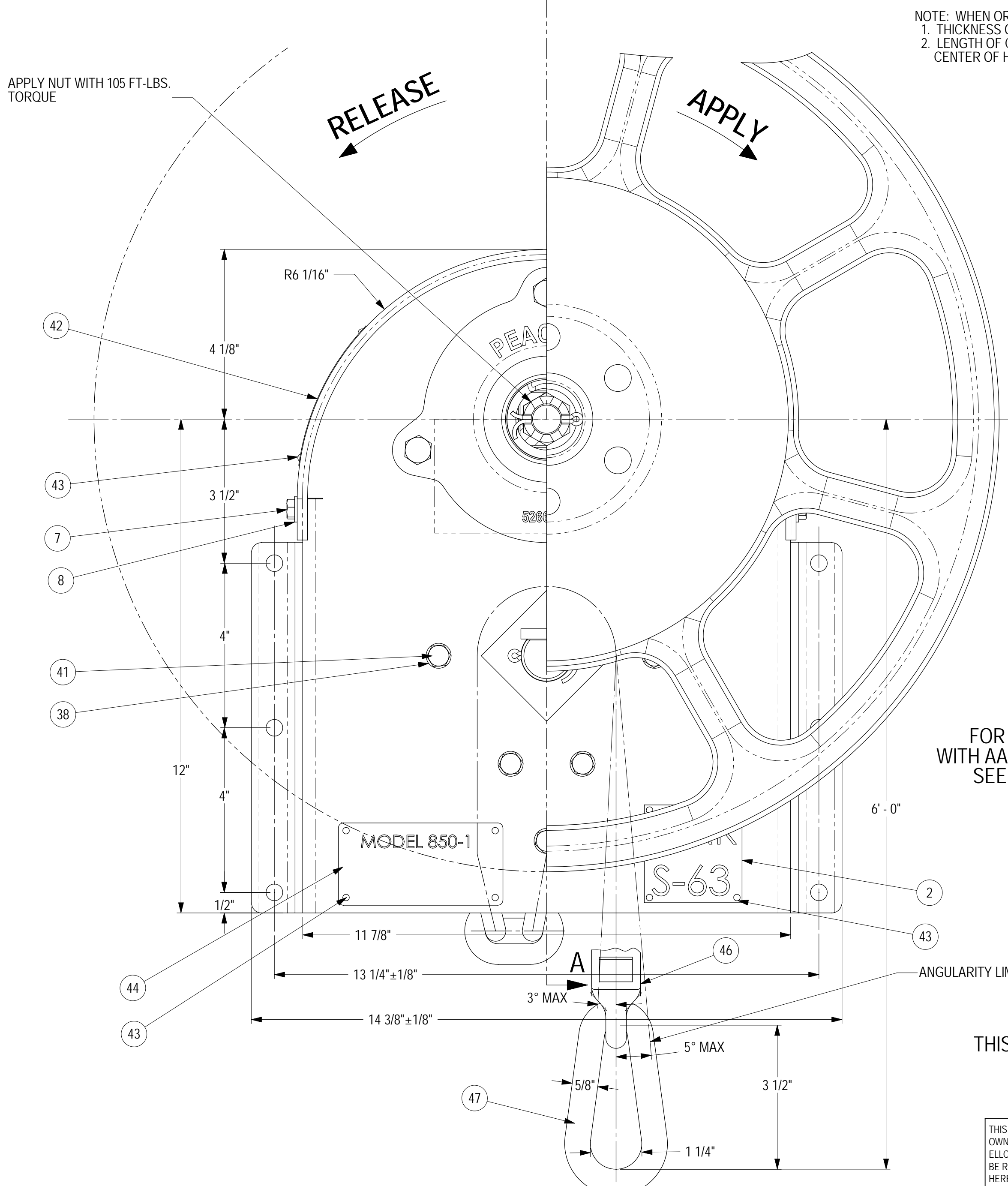
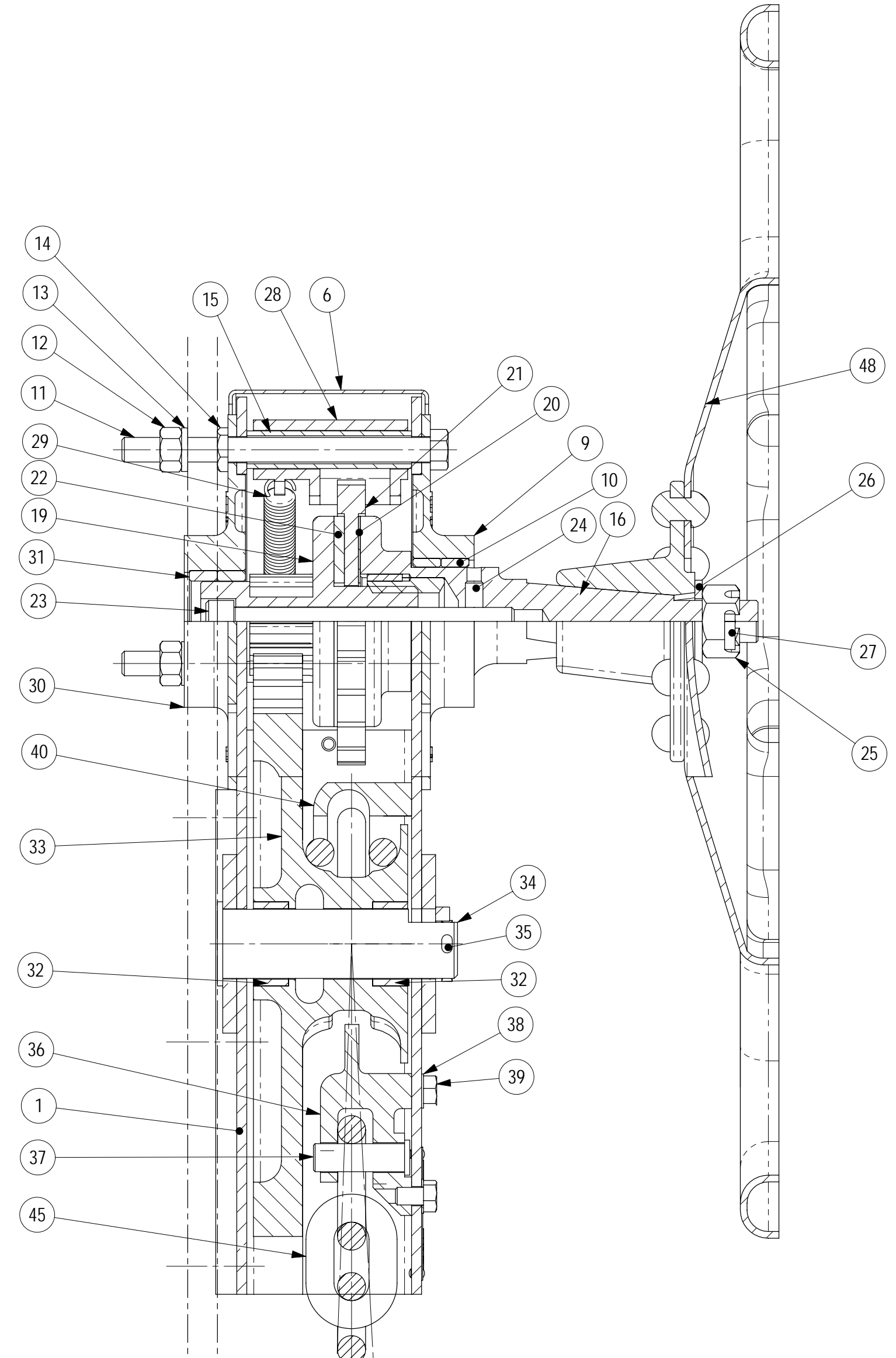


GENERAL DATA

BRAKE FURNISHED IN CARBON STEEL
 CONSTRUCTION, PRIMED FINISH

 GEAR RATIO - 8:1
 CHAIN TRAVEL - UNLIMITED
 WEIGHT - APPROX 100 LBS

 FORCES:
 125 LBS ON 22" DIA. HAND WHEEL -
 WITH SHEAVE - UNLIMITED TRAVEL - 4600 LBS
 WITH AAR 66 BELL CRANK - 4 3/8" TO 13 5/8" TRAVEL - 6200 LBS



NOTE: WHEN ORDERING SPECIFY-
 1. THICKNESS OF WALL "B".
 2. LENGTH OF CHAIN BELOW
 CENTER OF HAND WHEEL.

FOR APPLICATION
 WITH AAR 66 BELL CRANK
 SEE DWG. D-3637

THIS IS AN AAR - S-63 BRAKE
 CERTIFICATE NO. 68

THIS DOCUMENT AND ITS CONTENTS CONTAIN CONFIDENTIAL AND PROPRIETARY INFORMATION OWNED BY ELLCON-NATIONAL, INC. AND IT AND ALL COPIES THEREOF ARE TO BE RETURNED TO ELLCON-NATIONAL WHEN SO REQUESTED. THIS DOCUMENT OR ANY PART THEREOF SHALL NOT BE REPRODUCED, COPIED, OR TRANSMITTED ELECTRONICALLY. THE INFORMATION CONTAINED HEREIN SHALL NOT BE DISCLOSED BY THE RECIPIENT TO OTHERS OR USED BY RECIPIENT WITHOUT THE PRIOR WRITTEN CONSENT SPECIFIC TO EACH CASE. ELLCON-NATIONAL, INC.

PART No	QTY	DESCRIPTION	ITEM
5110	1	HOUSING	1
1929	1	AAR IDENTIFICATION PLATE	2
			3
			4
			5
992-B	1	COVER	6
703	2	SCREW	7
1086	2	LOCKWASHER	8
5266-1	1	FLANGE	9
74-A	2	BEARING	10
142-D	3	BOLT	11
143-B	3	NUT	12
1087	3	LOCKWASHER	13
143	3	NUT	14
147	3	SPACER - INTERNAL	15
1370	1	PINION ASSEMBLY (COMPLETE)	16
1616	1	HAND WHEEL SHAFT	17
			18
899	1	PINION GEAR	19
873	1	RELEASE DISC	20
872-C	1	RATCHET	21
874	1	FRICTION DISC	22
1615	1	PINION SCREW	23
1078-C	1	SET SCREW	24
4553-1	1	SLOTTED NUT	25
3958-16	1	PLAIN WASHER	26
4034-9	1	COTTER PIN	27
887	1	HOLDING PAWL	28
888	1	HOLDING PAWL SPRING	29
5266-2	1	FLANGE	30
74-D	2	BEARING	31
32285-1	2	BEARING	32
915-B	1	CHAIN DRUM	33
723-A	1	CHAIN DRUM SHAFT	34
4034-12	1	COTTER PIN	35
919	1	HOOK	36
931	1	CHAIN PIN	37
726	5	LOCKWASHER	38
702	3	SCREW	39
1067	1	CHAIN GUIDE	40
702-D	2	SCREW	41
31818	1	WARNING LABEL	42
3338-1	6	RIVET	43
4227	1	MODEL PLATE	44
788	1	CHAIN - 1/2" - 14,000 LB P.T. 6' - 6" O.A.L.	45
1091-A	1	JOINER	46
18	1	END LINK	47
1672	1	HAND WHEEL	48

NOTE

ALL DIMENSIONS SHOWN ARE NOMINAL, AND
 ARE SUBJECT TO COMMERCIAL TOLERANCES.
 IF ANY DIMENSIONS ARE CRITICAL TO THE
 INSTALLATION, CONTACT ELLCON-NATIONAL
 ENGINEERING DEPARTMENT.

SECTION A-A

0° ANGULARITY
 LIMIT OF CHAIN
 3° MAX



MODEL 850-1 BRAKE

SCALE	1:2	DATE	4-30-51	REV.	
DRAWN	MAR	D-1622		AA	
CHECKED	JWK				