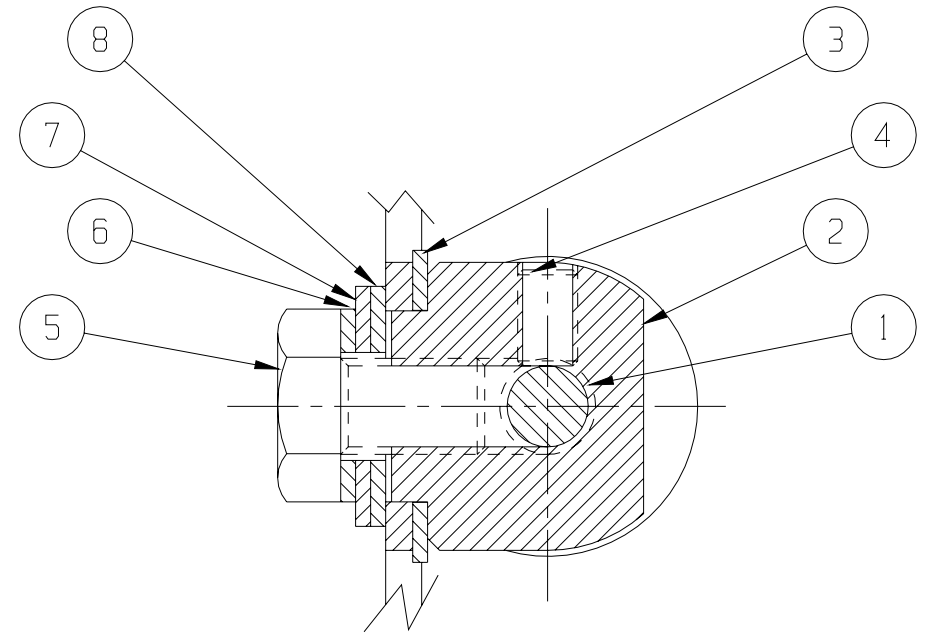
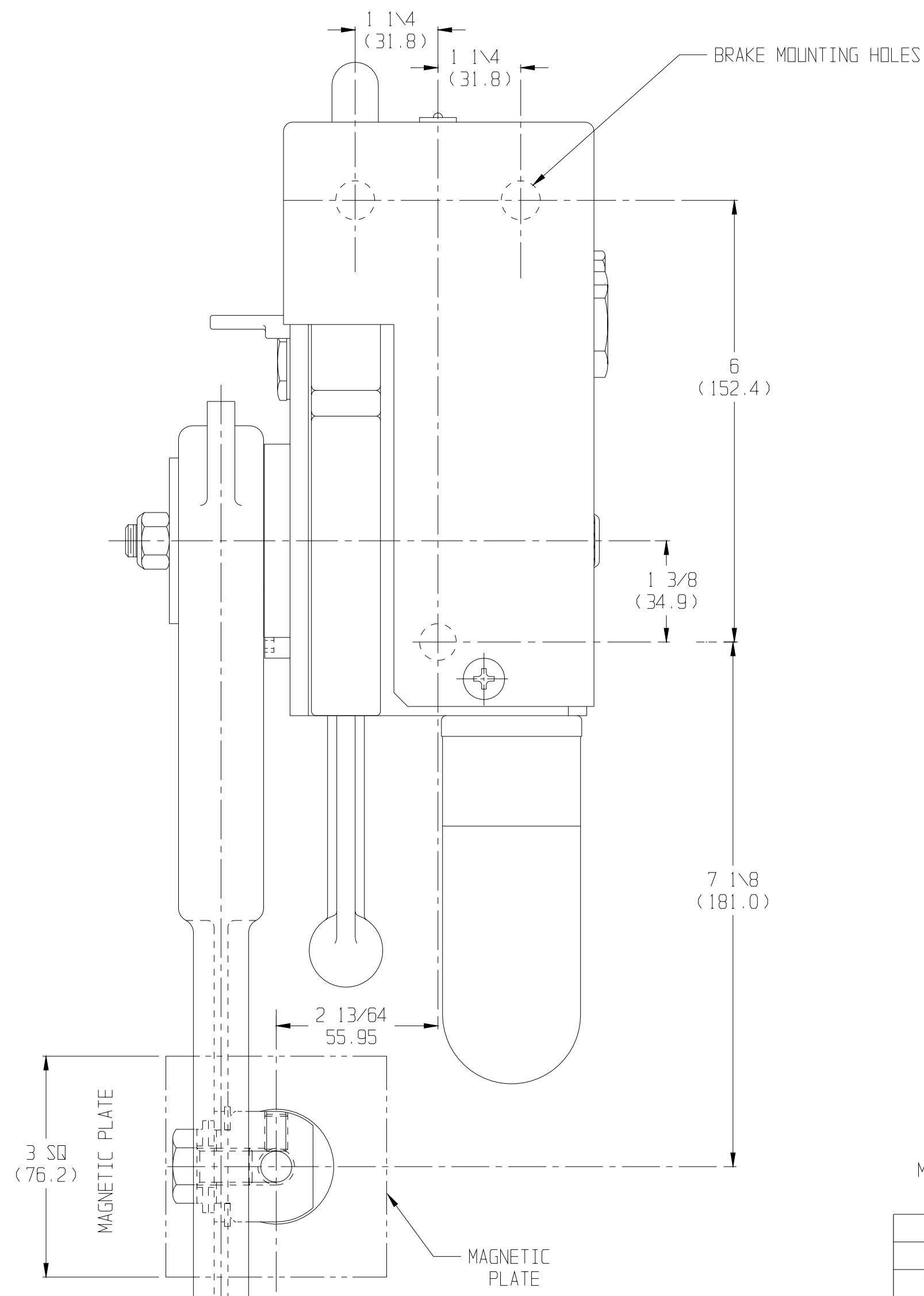
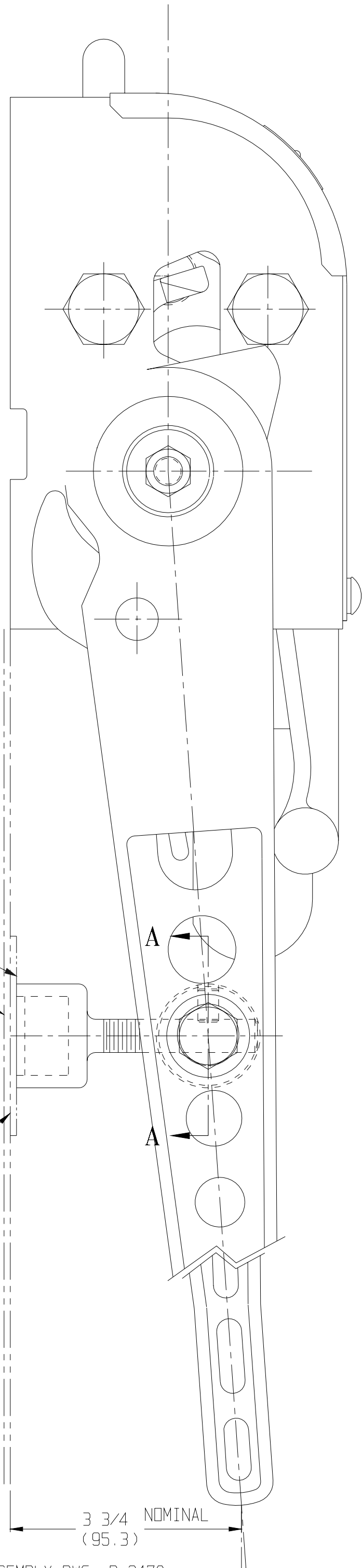


REVISIONS			
LTR	DATE	DESCRIPTION	BY
K	2-7-95	REDRAWN ON COMPUTER PER EDR 95-408	LPS

CAR WALL MUST BE LOW CARBON STEEL OR IRON.
 IF NON MAGNETIC CONSTRUCTION IS USED, 1/8" (3.2) THICK MAGNETIC PLATE MUST BE PROVIDED BY CARBUILDER ON OUTSIDE OF WALL.
 MAGNET MUST SEAT FLUSH AGAINST CAR WALL OR MAGNETIC PLATE



NOTES:

1. THE PURPOSE OF THE PEACOCK No.1150 RETAINER IS TO HOLD THE HAND LEVER BACK AGAINST ITS STOP, I.E. IN THE INOPERATIVE POSITION AND TO PREVENT IT FROM SWINGING.
2. CARE SHOULD BE EXERCISED IN HANDLING THE RETAINERS TO PREVENT ACCIDENTALLY STRIKING THE FACE OF THE MAGNET. A SHARP BLOW ON THE FACE OF THE MAGNET WILL MATERIALLY DEMAGNETIZE IT. SHOULD A MAGNET LOSE ITS HOLDING FORCE, THE No.1890 RETAINER OR THE WHOLE No.1150 ASSEMBLY SHOULD BE RETURNED TO E-N FOR REMAGNETIZING.

METRIC DIMENSIONS SHOWN IN () WT.=1 LB.-3 OZ.

QTY	PART No	DESCRIPTION	ITEM
1	1219	SWIVEL CAP SCREW SPACER LOCKWASHER	8
1	778	SWIVEL CAP SCREW SPACER	7
1	1156	SWIVEL CAP SCREW LOCKWASHER	6
1	3442-12	SWIVEL CAP SCREW	5
1	1262	SWIVEL SET SCREW	4
1	1261	SWIVEL LOCKWASHER	3
1	1218-A	SWIVEL	2
1	1890	RETAINER ASSEMBLY	1

ELLCON NATIONAL
 50 BEECHTREE BLVD. GREENVILLE, S.C. 29605

No.1150 MAGNETIC HAND LEVER RETAINER FOR TYPE 840-F-L AND 840-F-R BRAKES.

THIS DOCUMENT AND ITS CONTENTS CONTAIN CONFIDENTIAL AND PROPRIETARY INFORMATION OWNED BY ELLCON-NATIONAL, INC. AND IT AND ALL COPIES THEREOF ARE TO BE RETURNED TO ELLCON-NATIONAL WHEN SO REQUESTED. THIS DOCUMENT OR ANY PART THEREOF SHALL NOT BE REPRODUCED, COPIED, OR TRANSMITTED ELECTRONICALLY. THE INFORMATION CONTAINED HEREIN SHALL NOT BE DISCLOSED BY THE RECIPIENT TO OTHERS OR USED BY RECIPIENT WITHOUT THE PRIOR WRITTEN CONSENT SPECIFIC TO EACH CASE. ELLCON-NATIONAL, INC.

SCALE 8"=1'-0"	DATE 7-23-93	REV.
DRAWN T.C.	C-1624	K
CHECKED R		