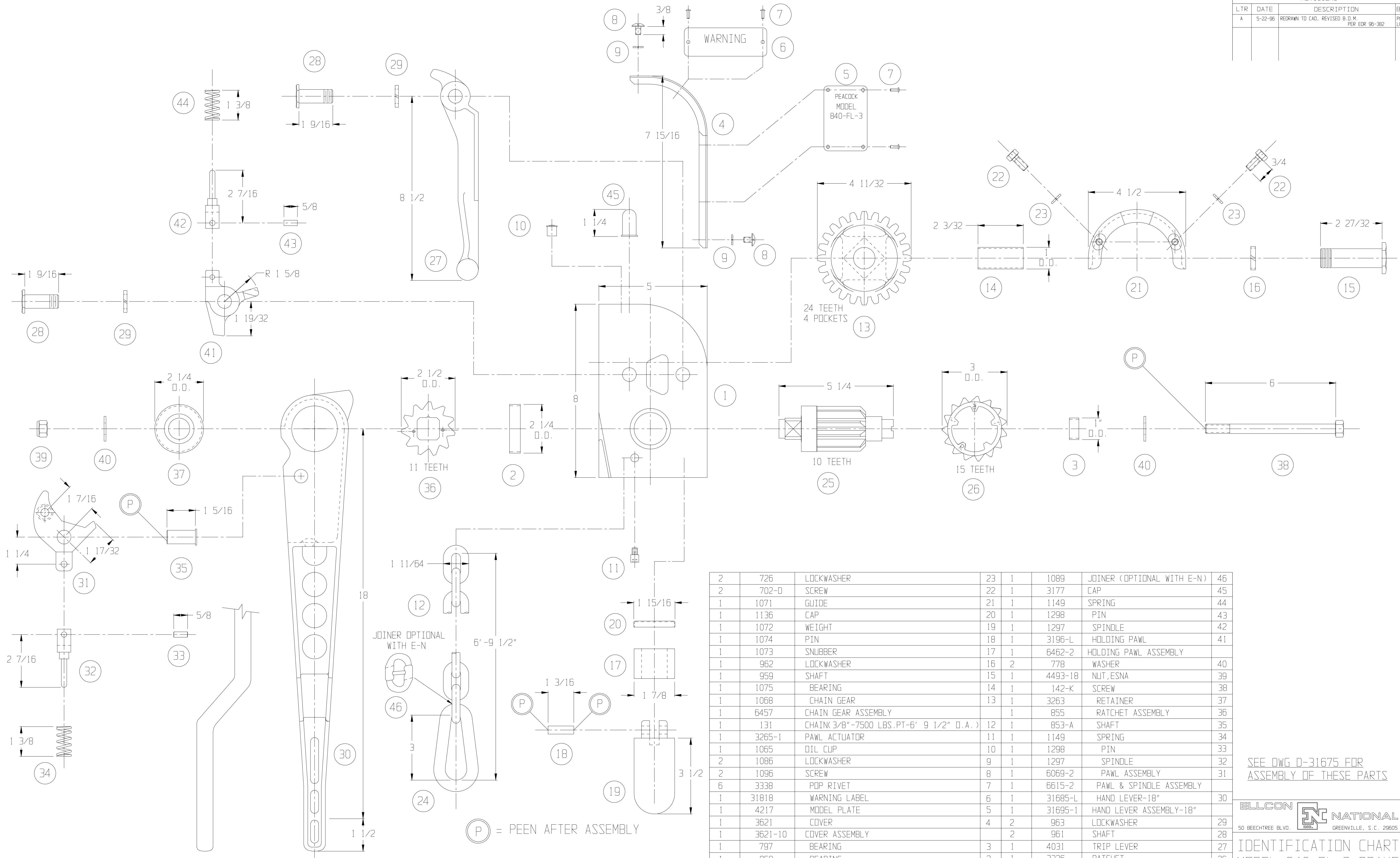


REVISIONS			
LTR	DATE	DESCRIPTION	BY
A	5-22-96	REDRAWN TO CAD, REVISED B.O.M. PER EDR 96-382	PCC LPS



(P) = PEEN AFTER ASSEMBLY

THIS DOCUMENT AND ITS CONTENTS CONTAIN CONFIDENTIAL AND PROPRIETARY INFORMATION OWNED BY ELLCON-NATIONAL, INC. AND IT AND ALL COPIES THEREOF ARE TO BE RETURNED TO ELLCON-NATIONAL WHEN SO REQUESTED. THIS DOCUMENT OR ANY PART THEREOF SHALL NOT BE REPRODUCED, COPIED, OR TRANSMITTED ELECTRONICALLY. THE INFORMATION CONTAINED HEREIN SHALL NOT BE DISCLOSED BY THE RECIPIENT TO OTHERS OR USED BY RECIPIENT WITHOUT THE PRIOR WRITTEN CONSENT SPECIFIC TO EACH CASE. ELLCON-NATIONAL, INC.

2	726	LOCKWASHER	23	1	1089	JOINER (OPTIONAL WITH E-N)	46
2	702-D	SCREW	22	1	3177	CAP	45
1	1071	GUIDE	21	1	1149	SPRING	44
1	1136	CAP	20	1	1298	PIN	43
1	1072	WEIGHT	19	1	1297	SPINDLE	42
1	1074	PIN	18	1	3196-L	HOLDING PAWL	41
1	1073	SNUBBER	17	1	6462-2	HOLDING PAWL ASSEMBLY	
1	962	LOCKWASHER	16	2	778	WASHER	40
1	959	SHAFT	15	1	4493-18	NUT,ESNA	39
1	1075	BEARING	14	1	142-K	SCREW	38
1	1068	CHAIN GEAR	13	1	3263	RETAINER	37
1	6457	CHAIN GEAR ASSEMBLY		1	855	RATCHET ASSEMBLY	36
1	131	CHAIN 3/8"-7500 LBS.PT-6' 9 1/2" O.A.)	12	1	853-A	SHAFT	35
1	3265-1	PAWL ACTUATOR	11	1	1149	SPRING	34
1	1065	OIL CUP	10	1	1298	PIN	33
2	1086	LOCKWASHER	9	1	1297	SPINDLE	32
2	1096	SCREW	8	1	6069-2	PAWL ASSEMBLY	31
6	3338	PDP RIVET	7	1	6615-2	PAWL & SPINDLE ASSEMBLY	
1	31818	WARNING LABEL	6	1	31685-L	HAND LEVER-18"	30
1	4217	MODEL PLATE	5	1	31695-1	HAND LEVER ASSEMBLY-18"	
1	3621	COVER	4	2	963	LOCKWASHER	29
1	3621-10	COVER ASSEMBLY		2	961	SHAFT	28
1	797	BEARING	3	1	4031	TRIP LEVER	27
1	858	BEARING	2	1	3326	RATCHET	26
1	3718	HOUSING	1	1	3530	PINION ASSEMBLY	25
1	3718-10	HOUSING ASSEMBLY		1	15	END LINK	24

SEE DWG D-31675 FOR ASSEMBLY OF THESE PARTS



IDENTIFICATION CHART
MODEL 840-FL-3 BRAKE

SCALE	DATE	REV.
HALF	9-10-90	
DRAWN		
CHECKED		

BILL OF MATERIAL

DX-31675 A