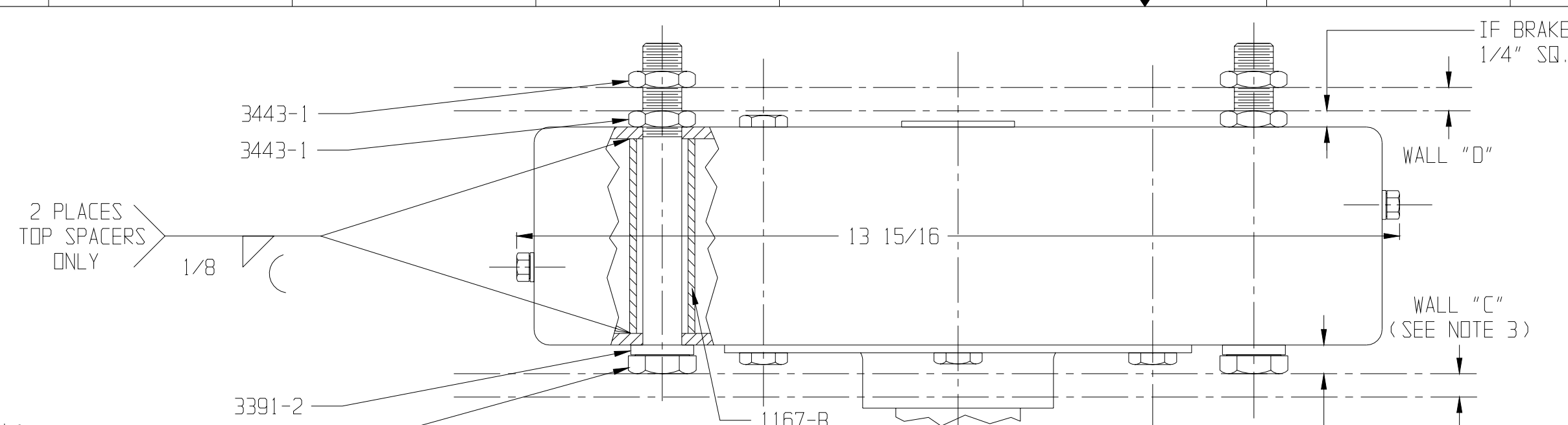


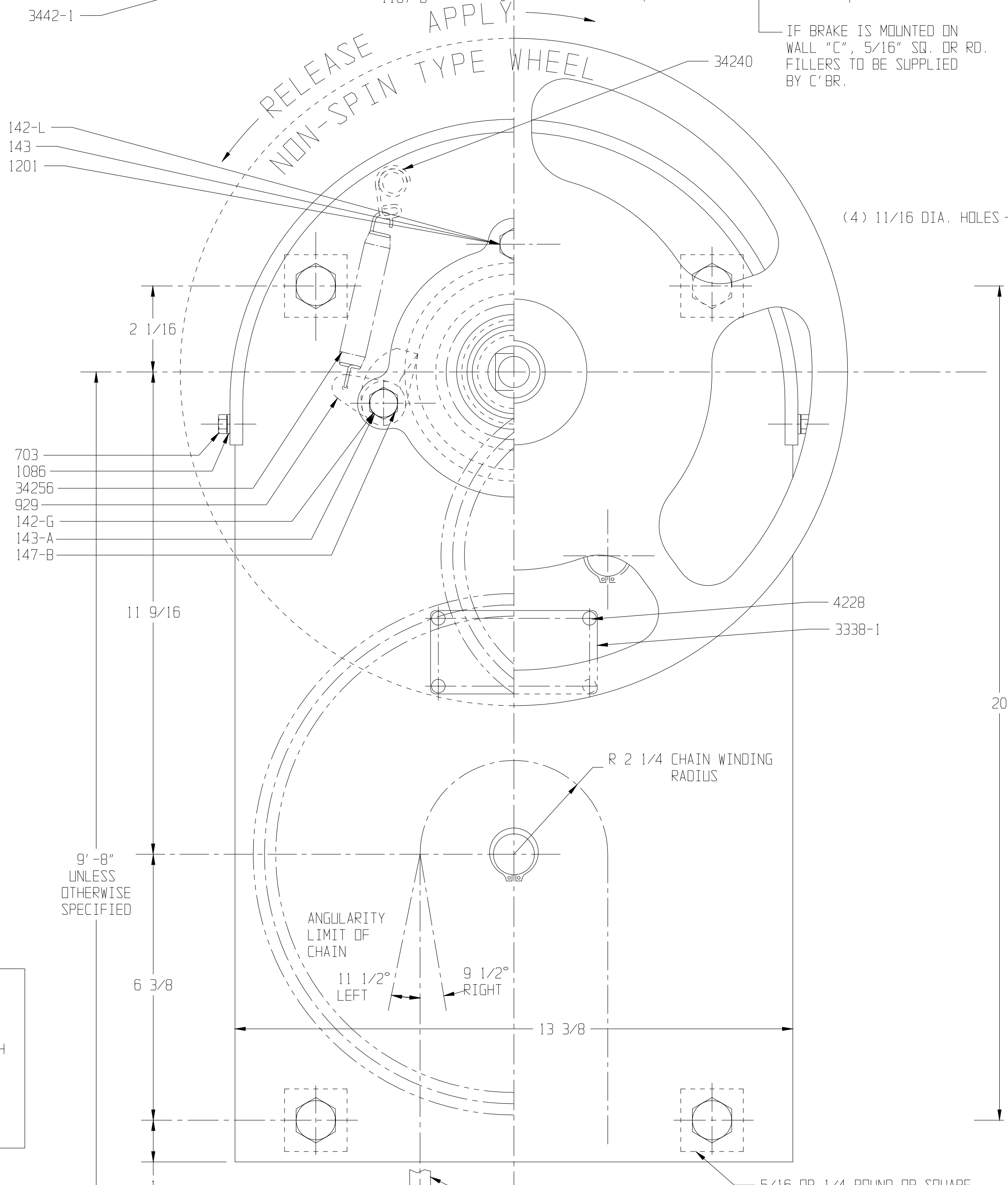
REVISIONS			
LTR	DATE	DESCRIPTION	BY
AA	9-25-98	REDRAWN ON CAD WITH THE FOLLOWING CHANGES: ADDED P/N 34240 SHOWN @ J-11 PER ECN #515	AKH
BB	12-4-98	PART 34256 WAS 888 @ G-13 PER ECN 1710	JT
CC	2-14-02	"WITH BLACK PRIMER" WAS "PAINTED IN RED OXIDE".	GMP



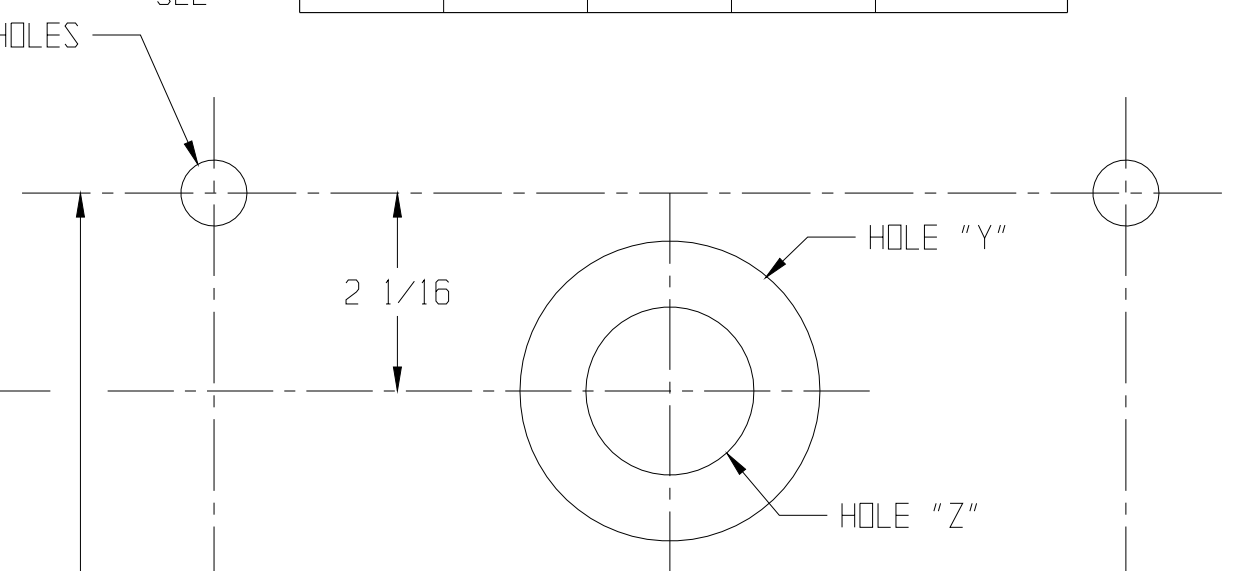
IF BRAKE IS MOUNTED ON WALL "D"
1/4" SQ. DR. RD. FILLER TO BE SUPPLIED BY C'BR.

NOTES:
1. CUSTOMER TO PROVIDE E-N WITH THE FOLLOWING INFORMATION:
HAND WHEEL CLEARANCE (H.W.C.) DESIRED, DIAMETER OF HAND WHEEL, LENGTH OF CHAIN BELOW C OF HAND WHEEL
2. H.W.C. BASED ON H.W. PUSHED IN.
3. WHEN BRAKE IS MOUNTED ON WALL "C", THE THICKNESS OF WALL "C" PLUS FILLER MUST BE SUBTRACTED FROM DIMENSION IN HAND-WHEEL CLEARANCE COLUMN OF SHAFT TABULATION TO OBTAIN ACTUAL HAND WHEEL CLEARANCE.

SHAFT TABULATION				
BRAKE ASSY No.	SHAFT No.	PINION ASSY No.	HANDWHEEL CLEARANCE	MODEL PLATE
210-3	926-A	1140-3	5 1/8	4228
210-4	926-B	1140-4	9 5/8	4228-1
210-5	926-F	1140-5	4 1/8	4228-2
210-6	3437	1140-6	6 1/4	4228-3
210-7	3437	1140-6	6 3/4	4228-4
210-8	926-G	1140-7	4 3/8	4228-5
210-9	33213	1140-8	7 3/4	4228-6



SEE ***
SEE ***
SEE ***



HOLE "Y" 3 1/8 DIA. IN WALL "C" WHEN BRAKE IS APPLIED BETWEEN WALLS, AND IN WALL "D" WHEN APPLIED BEHIND WALL "D".

HOLE "Z" 1 3/4 DIA. IN WALL "C" WHEN BRAKE IS APPLIED BEHIND WALL "D".

DRILLING DIAGRAM

NOTE

ALL DIMENSIONS SHOWN ARE NOMINAL, AND ARE SUBJECT TO COMMERCIAL TOLERANCE. IF ANY DIMENSIONS ARE CRITICAL TO THE INSTALLATION, CONTACT ELLCON-NATIONAL ENGINEERING DEPARTMENT.

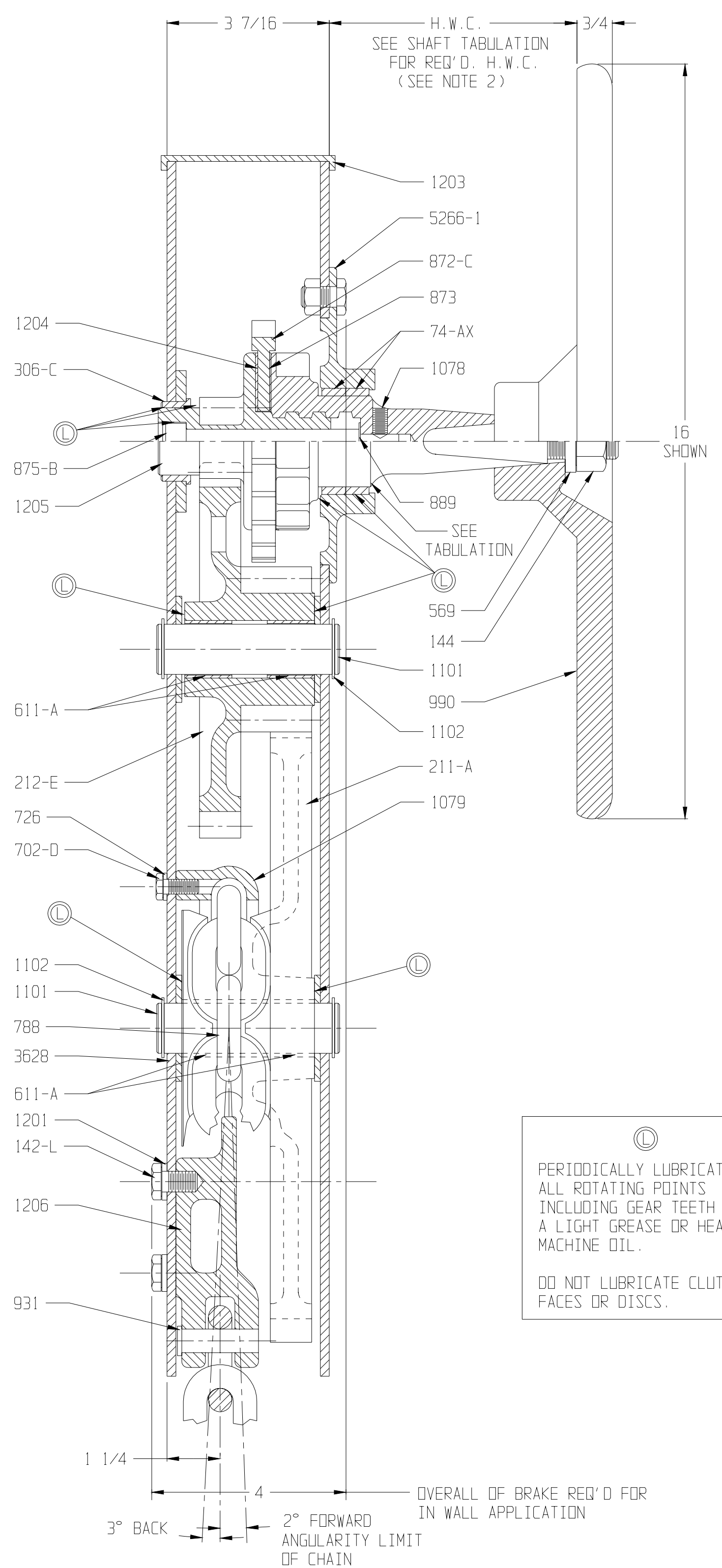
***- MODEL 210-7, -8, -9 USES No. 1672-3 HAND WHEEL

GENERAL DATA			
BRAKE FURNISHED IN MALLEABLE IRON & STEEL CONSTRUCTION, WITH BLACK PRIMER FINISH			
FORCES-ACTUAL 125# ON HAND WHEEL			
16"	18"	20"	22"
4150	4850	5600	6300
GEAR RATIO-----15 TO 1			
APPROXIMATE WEIGHT-----100 LBS.			
CHAIN TRAVEL-----UNLIMITED			

BILL OF MATERIALS		
PART	No.	NAME
3628	1	HOUSING
1203	1	" COVER
703	2	" " SCREW
1086	2	" " LOCKWASHER
306-C	1	" BUSHING
5266-1	1	" FLANGE
74-AX	2	" " BUSHING
142-G	1	" BOLT
147-B	1	" " SPACER
143-A	1	" " NUT
142-L	2	" SCREW
143	2	" " NUT
1201	3	" " " LKW.
SEE TABULATION	1	PINION ASSEMBLY
1203	1	" HAND WHEEL SHAFT
875-B	1	" SCREW
1078	1	" SET SCREW
889	1	" LOCKWASHER
144	1	" NUT
569	1	" WASHER
1205	1	" GEAR
872-C	1	" RATCHET
873	1	" RELEASE DISC
1204	1	" FRICTION DISC
929	1	" RATCHET PAWL
34256	1	" " " SPRING
34240	1	WIRE FORM
212-E	1	DOUBLE GEAR
611-A	2	" " BUSHING]-ASS'Y. A-31537
1101	1	" " SHAFT
1102	2	" " " RETAINER
788	1	CHAIN- 1/2" -14000# P.T. 10'-0" O.A.
211-A	1	" DRUM
611-A	2	" " BUSHING]-ASS'Y. A-31538
1101	1	" " SHAFT
1102	2	" " " RETAINER
1079	1	" GUIDE
702-D	3	" " SCREW
726	3	" " " LOCKWASHER
1206	1	" HOOK
931	1	" " PIN
142-L	3	" " SCREW
1201	3	" " " LOCKWASHER
1091-A	1	JOINER
18	1	END LINK
990	1	HAND WHEEL- 16 DIA. AS SPECIFIED
1000	1	" " 18 DIA. " "
1010	1	" " 20 DIA. " "
1130	1	" " 22 DIA. " "
3443-1	4	SHIPPING NUT
3442-1	4	MOUNTING BOLT- 5" LONG
3443-1	4	" " NUT
3391-2	4	" " LOCKWASHER
1167-B	4	HOUSING SPACER
SEE TAB.	1	MODEL PLATE
3338-1	4	PLATE RIVETS
1672-2	1	HAND WHEEL 22" DIA. AS SPECIFIED
SEE ***- 1672-3	1	HAND WHEEL 22" DIA. AS SPECIFIED

Ⓞ PERIODICALLY LUBRICATE ALL ROTATING POINTS INCLUDING GEAR TEETH WITH A LIGHT GREASE OR HEAVY MACHINE OIL.

DO NOT LUBRICATE CLUTCH FACES OR DISCS.



THIS DOCUMENT AND ITS CONTENTS CONTAIN CONFIDENTIAL AND PROPRIETARY INFORMATION OWNED BY ELLCON-NATIONAL, INC. AND IT AND ALL COPIES THEREOF ARE TO BE RETURNED TO ELLCON-NATIONAL WHEN SO REQUESTED. THIS DOCUMENT OR ANY PART THEREOF SHALL NOT BE REPRODUCED, COPIED, OR TRANSMITTED ELECTRONICALLY. THE INFORMATION CONTAINED HEREIN SHALL NOT BE DISCLOSED BY THE RECIPIENT TO OTHERS OR USED BY RECIPIENT WITHOUT THE PRIOR WRITTEN CONSENT SPECIFIC TO EACH CASE. ELLCON-NATIONAL, INC.

ELLCON NATIONAL
50 BEECHTREE BLVD. GREENVILLE, S.C. 29605

No. 210 BRAKE ASSEMBLY

SCALE 6" = 1'-0" DATE 6-1-53 REV. _____

DRAWN SS _____
CHECKED R D-1613 CC