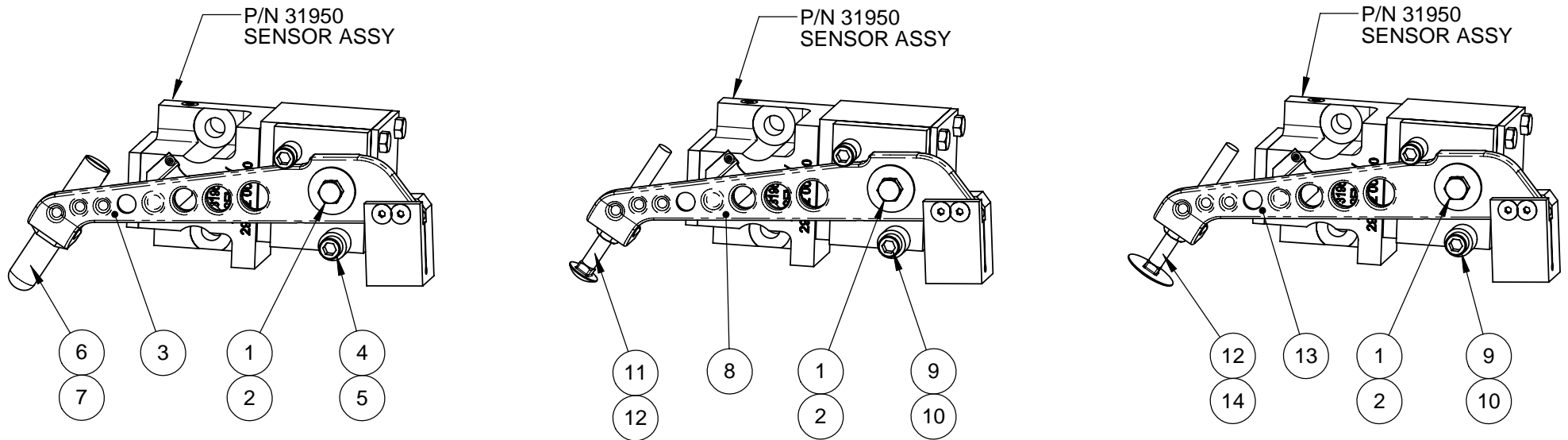


## LEVER ARM ASSEMBLY OR ADJUSTING SCREW REPLACEMENT INSTRUCTIONS ON ELLCON-NATIONAL'S NO. 6600-1 SERIES EMPTY LOAD DEVICE / 31950 SENSOR ASSEMBLY

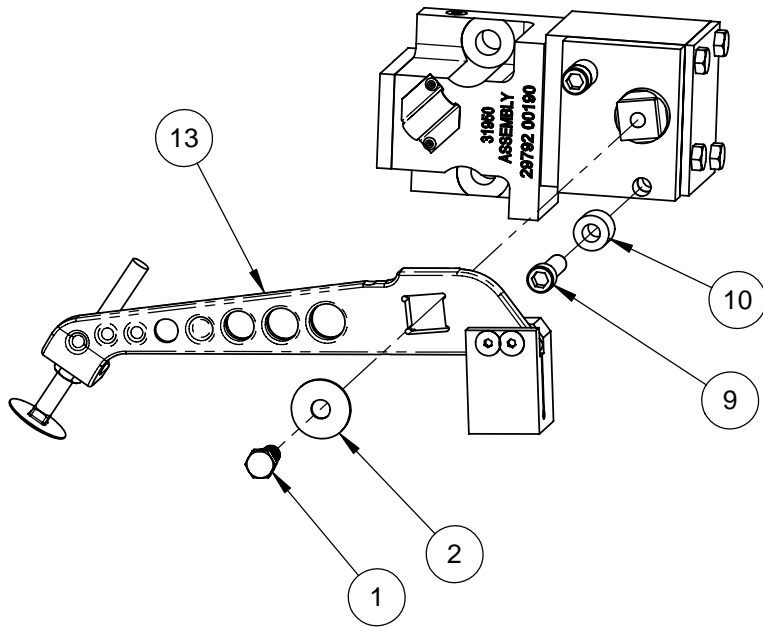


BILL OF MATERIAL		
OLD STYLE		
ITEM	PART NO.	DESCRIPTION
1	3442-156	3/8" X 1" HEX HEAD BOLT
2	31941	BELLEVILLE WASHER
3	34250	ARM ASSEMBLY - PLASTIC SCREW
4	3296-39	3/8" X 7/8" CAP SCREW
5	3391-5	WASHER
6	32297	3/4" PLASTIC SCREW
7	32168	JAM NUTS (2 REQUIRED)

BILL OF MATERIAL		
INTERMEDIATE STYLE		
ITEM	PART NO.	DESCRIPTION
1	3442-156	SAME AS OLD STYLE
2	31941	SAME AS OLD STYLE
8	34250	ARM ASSEMBLY - 3/8" CARRIAGE SCREW
9	3296-57	3/8" X 1 1/2" CAP SCREW
10	34245	SPACER
11	7311-4	3/8" CARRIAGE SCREW
12	3443-66	LOCK NUTS (2 REQUIRED)

BILL OF MATERIAL		
NEW STYLE		
ITEM	PART NO.	DESCRIPTION
1	3442-156	SAME AS OLD STYLE
2	31941	SAME AS OLD STYLE
13	34250	ARM ASSEMBLY - 3/8" ADJUSTING SCREW
9	3296-57	SAME AS INTERMEDIATE STYLE
10	34245	SAME AS INTERMEDIATE STYLE
14	34999	3/8" ADJUSTING SCREW
12	3443-66	SAME AS INTERMEDIATE STYLE

**FIGURE 1**



**FIGURE 2  
ARM REPLACEMENT**

IF ARM IS BROKEN OR BENT, ONLY ITEM 13: ARM ASSEMBLY WITH 3/8-INCH ADJUSTING SCREW SHOULD BE APPLIED.

**REMOVAL INSTRUCTIONS:**

- 1) REMOVE ITEMS 1 & 2.
- 2) REMOVE ARM ASSEMBLY ITEMS 3, 8 OR 13 (FIGURE 1).
- 3) REMOVE ITEMS 4 & 5. IF THESE ITEMS HAVE ALREADY BEEN REPLACED WITH ITEMS 9 & 10 - DO **NOT** REMOVE.

**INSTALLATION INSTRUCTIONS:** (SEE FIGURE 2)

- 1) APPLY ITEM 10: SPACER & ITEM 9: CAP SCREW (IF REQUIRED).
- 2) INSTALL ITEM 13: NEW LEVER ARM ASSY WITH ADJUSTING SCREW ON TO SQUARE SHAFT.
- 3) INSTALL ITEMS 1 & 2, TIGHTEN ITEM 1: BOLT TO 12 FT/LBS.

**ADJUSTING SCREW:**  
(SEE FIGURES 1 & 2)

IF THE PLASTIC SCREW (PART NO. 32297) IS BENT OR BROKEN A NEW STYLE ARM ASSEMBLY (PART NO. 34250) NEEDS TO BE ORDERED. IF THE 3/8-INCH CARRIAGE SCREW (PART NO. 7311-4) OR 3/8-INCH ADJUSTING SCREW (PART NO. 34999) IS BENT OR BROKEN - AND ARM IS NOT DAMAGED - REPLACE SCREW WITH PART NO 34999.

**EMPTY / LOAD SETUP  
PROCEDURE:**

AFTER SCREW OR ARM ASSEMBLY HAS BEEN REPLACED, IT WILL BE NECESSARY TO APPLY AIR TO CAR AND FOLLOW PROCEDURE FOR SETTING UP.

## 6600-1 & 6600-1U SET-UP PROCEDURE

(NOTE: Car must be on level transit track before proceeding with Set-Up Procedure.)

- 1) Using a ¼-inch Allen Wrench, remove the ¼-inch Pipe Plug from the Sensor Valve, and save it for later replacement. (See Figure 1)
- 2) Loosen the Lock Nuts. Rotate the Adjusting Screw downward to its extreme limit. (See Figure 2)
- 3) Place an adjusting block on the side frame directly below the contact point of the Adjusting Screw. Adjust the block thickness to be equal to 1/5 of the spring deflection, between light and loaded car or as stenciled on the car. If the empty load truck deflection is not known, and there is no car stencil, a 7/16-inch thick block should be used.
- 4) Make a 30-psi reduction with the Single Car Test Device or automated test device. With the brakes applied, rotate the Adjusting Screw upward until a slight blow of air is obtained at the pipe plug hole. Using the Lock Nut and Blue LocTite No. 425 or equal, lock the Adjusting Screw in place - making sure it does not turn in the process. (See Figure 3)
- 5) Release the brakes. The Sensor Arm should retract upward toward its released position.
- 6) Replace the ¼-inch Pipe Plug, using a pipe thread sealant, and set the brakes making a 30-psi reduction. Coat the Pipe Plug with soap suds to detect leakage - checking to see that the Indicator Stem **is** protruding from Part No. 31800, Proportional Valve (see Figure 4), then release the brakes and note Sensor Arm retract upward.
- 7) Place a 2 ¼-inch thick block on the side frame, and make a 30-psi reduction - making sure the Adjusting Screw is contacting the top of the block and, also, making sure the Indicator Stem **is not** protruding from Part No. 31800, Proportional Valve (see Figure 4). Release the brakes, noting that the Sensor Arm retracts toward its released position.
- 8) Perform Empty Load Test as required in *AAR Code of Air Brake Systems Tests for Freight Equipment*, Standard S-486.

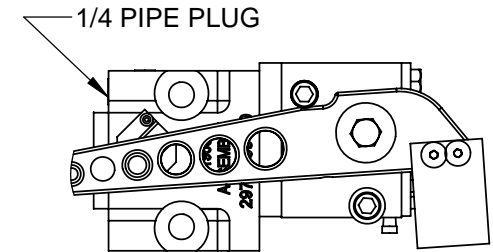


FIGURE 1

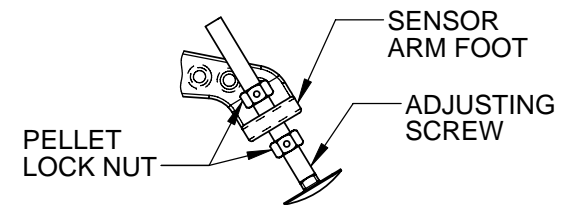


FIGURE 2  
SENSOR ARM

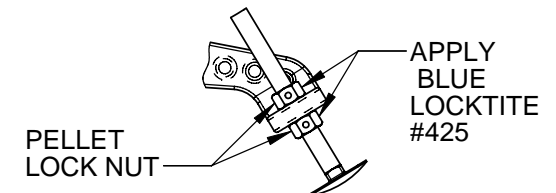


FIGURE 3  
SENSOR ARM

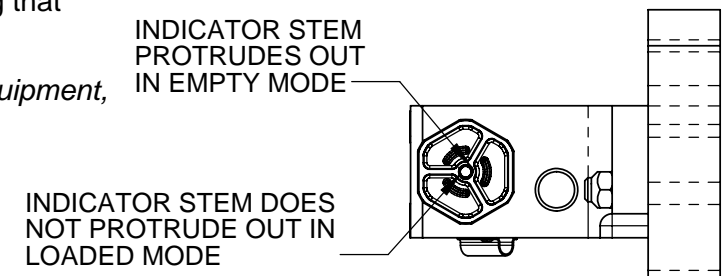


FIGURE 4  
PROPORTIONAL VALVE

Any questions, contact **ELLCON-NATIONAL, INC.**  
 Telephone: 864/277-5000 • Fax: 864/277-5207  
 50 Beechtree Boulevard, Post Office Box 9377  
 Greenville, SC 29604-9377  
 Website: [www.ellcon-national.com](http://www.ellcon-national.com)