

SERVICE BULLETIN

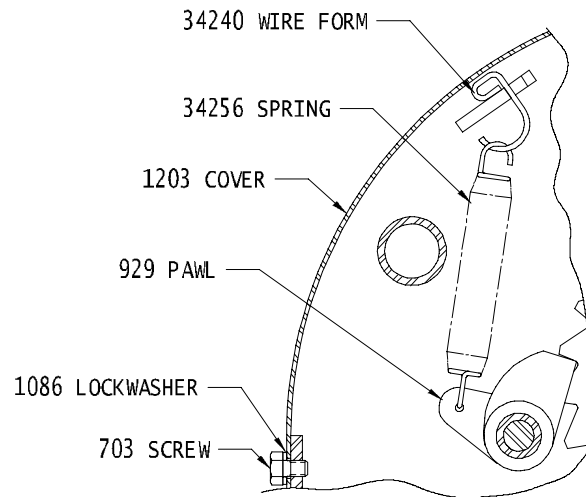
No. 98-3

SUBJECT: PAWL SPRING UPGRADE KIT P/N 34292 FOR MODEL 210 HAND BRAKES

Kit consists of P/N's 34240, Wire Form & 34256, Spring

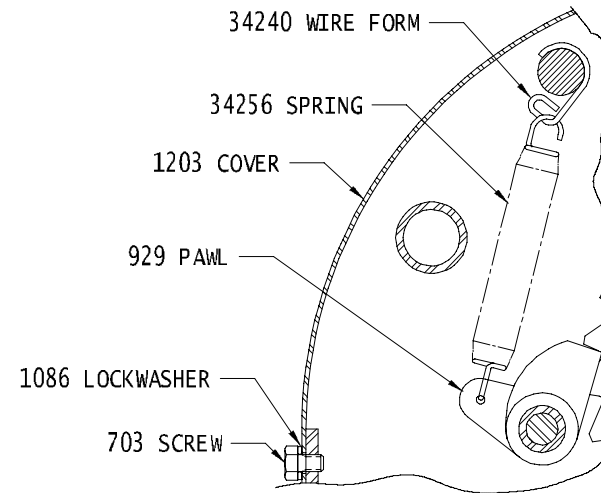
FOR HAND BRAKES PRIOR TO 10/97

- Fully release Hand Brake
- Remove P/N 1203 Cover by removing the two P/N 703 Screws and the two P/N 1086 Lock Washers
- Remove P/N 888 Spring – this can be done by cutting the lower loop
- Insert a new P/N 34256 Spring onto the Holding Pawl
- Hook the P/N 34240 Wire Form thru the hole in the plate in the Housing as shown in the diagram below
- Stretch the Spring and hook it to the Wire Form as shown in the diagram
- Reinstall the P/N 1203 Cover with the P/N 703 Screws and P/N 1086 Lock Washers
- Apply and release the Hand Brake to insure proper function



FOR HAND BRAKES AFTER 10/97

- Fully release Hand Brake
- Remove P/N 1203 Cover by removing the two P/N 703 Screws and the two P/N 1086 Lock Washers
- Remove P/N 888 Spring – this can be done by cutting the lower loop
- Insert a new P/N 34256 Spring onto the Holding Pawl
- Hook the P/N 34240 Wire Form around the tube in the Housing as shown in the diagram below
- Stretch the Spring and hook it to the Wire Form as shown in the diagram
- Reinstall the P/N 1203 Cover with the P/N 703 Screws and P/N 1086 Lock Washers
- Apply and release the Hand Brake to insure proper function



Rev B
12-14-98